



65 Brookside Avenue, Ashford, Surrey. TW15 3LZ.

3 Bedroom Terraced House - £475,000 Freehold

**65 Brookside Avenue, Ashford, Surrey.
TW15 3LZ.**

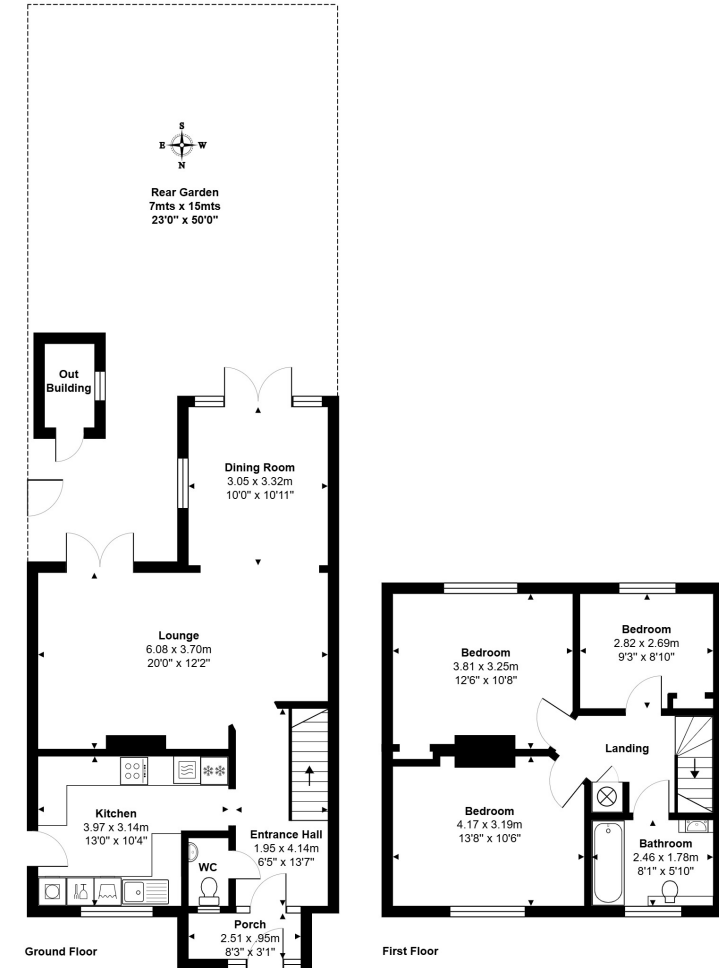
01784 451458

3 Bedroom Terraced House - £475,000 Freehold

WELL PRESENTED & SPACIOUS THREE BEDROOM PROPERTY SITUATED ALONG THIS SOUGHT AFTER ROAD IDEALLY LOCATED FOR EASY ACCESS TO ASHFORD TOWN CENTRE, MAINLINE TRAIN STATION & LOCAL MOTORWAY NETWORKS. The property benefits from a spacious lounge/diner, separate modern fitted kitchen, downstairs W.C, three well-proportioned bedrooms, modern white bathroom suite, large secluded rear garden and off-street parking. Viewings Highly Recommended!

Key Features

**EXTENDED & SPACIOUS
OFF-STREET PARKING
WELL PRESENTED THROUGHOUT
LARGE SECLUDED REAR GARDEN
DOWNSTAIRS W.C.**



Total Area: 102.1 m² ... 1099 ft²

All measurements are approximate and for display purposes only.



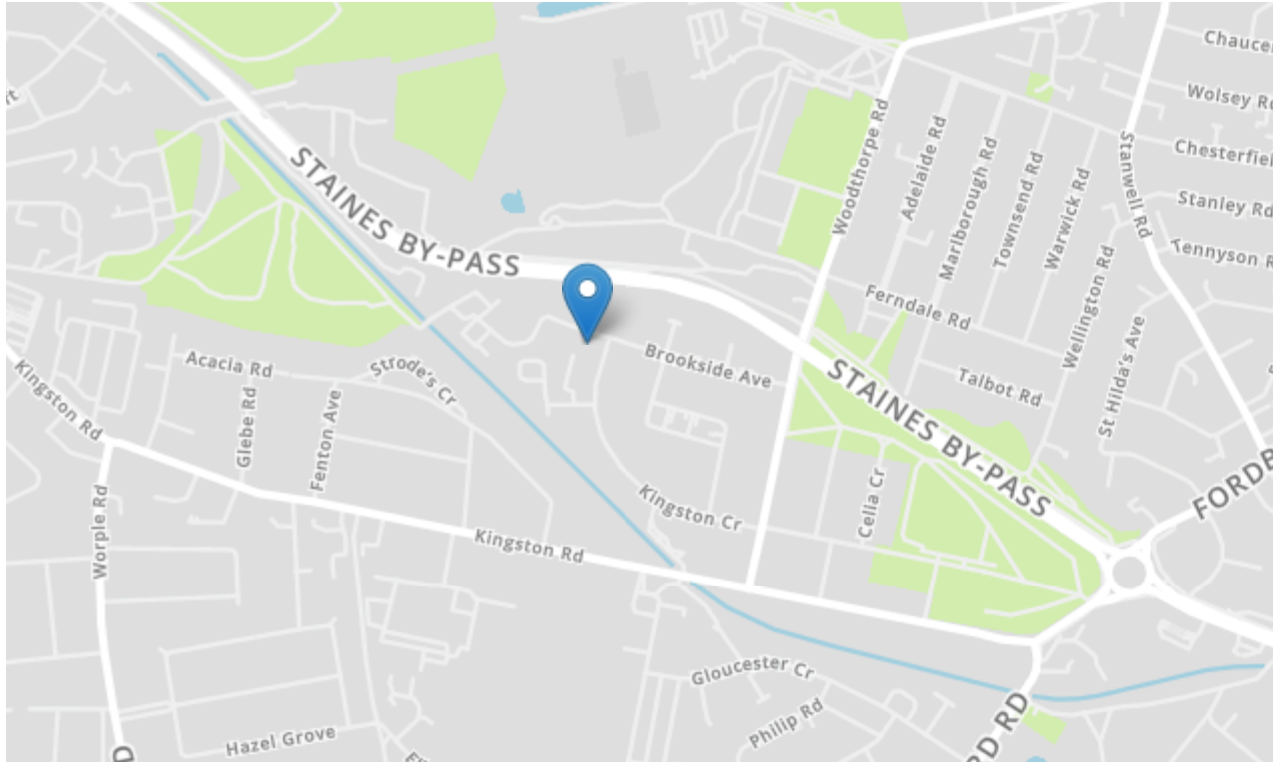
GREGORY BROWN
RESIDENTIAL SALES & LETTINGS





65 Brookside Avenue, Ashford, Surrey. TW15 3LZ.

gregory-brown.co.uk



Tenure **Freehold**
Lease Term
Ground Rent
Service Charge
Local Authority
Council Tax

We have prepared these property particulars as a general guide to a broad description of the property. They are not intended to constitute part of an offer or contract. We have not carried out a structural survey and the services, appliances and specific fittings have not been tested. All photographs, measurements, floorplans and distances referred to are given as a guide only and should not be relied upon for the purchase of carpets or any other fixtures or fittings. Lease details, service charges and ground rents (where applicable) and council tax are given as a guide only and should be checked and confirmed by your solicitor prior to exchange of contracts. The copyright of all details, photographs and floorplans remain exclusive to Gregory Brown.

