



Northway

01684 293246



19 The Park, Northway, Tewkesbury, GL20 8SS

This is a beautifully light and spacious detached home which has been lovingly cared for and presented.

The accommodation briefly comprises of a dual aspect lounge which has the advantage of patio doors out to the garden, a large picture window to the front and for those dark winter evenings the luxury of a log burner within an attractive fire surround. An archway leads through to the dining room.

The kitchen has a door to the side garden and is fitted with a range of wall and base units with an integrated double oven, gas hob and dishwasher.

Adjacent is a useful utility room.

Completing the accommodation on the ground floor is a guest wc.

On the first floor there are four double bedrooms and modern shower room. The main bedroom has the benefit of an ensuite shower room and fitted wardrobes.

The main shower room has the benefit of underfloor and comprises of a vanity unit with inset wash basin, low level wc and walk in shower cubicle.

Outside the rear garden is attractively presented with patio area, lawn, garden shed and there is the advantage of gated side access on both sides of the property.



The front garden is also laid to lawn with a good sized driveway providing ample parking for several vehicles.

There is also access to the garage store.

Throughout the property benefits from upvc double glazing and gas central heating.

Northway is a popular residential area with the benefit of a primary school, local shops, inn and food outlets all within easy walking distance of the property. It is located with easy access to the train station and motorway network, making it an ideal commuter base.

Tewkesbury town centre is less than 2 miles away and linked by cycle and pedestrian pathways and its wealth of shops, eateries, leisure facilities, The Roses Theatre, a newly built hospital and medical centre,

Centrally situated between Cheltenham (10 miles), Worcester (18 miles), Gloucester (11 miles) M5 J9 (1.5 miles) Ashchurch Station (2 miles) it is an excellent commuting base.

Ground Floor

Lounge 22'x11'4"
 Dining Room 9'2"x9'
 Kitchen 11'11"x7'10"
 Utility 8'3"x7'10"
 Guest wc

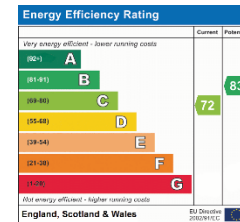
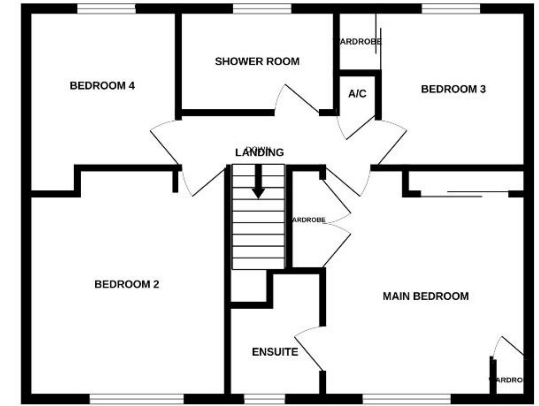
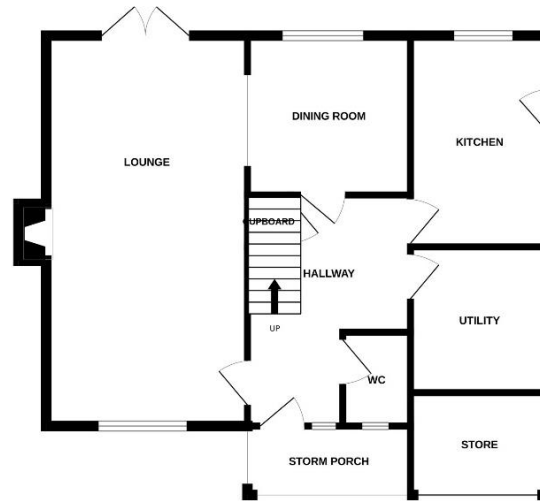
First Floor

Bedroom 1 12'9"x11'6"max
 Ensuite 5'9"x5'8"
 Bedroom 2 12'9"x11'7"max
 Bedroom 3 9'x8'6"
 Bedroom 4 9'1"x8'7"
 Shower Room 8'11"x5'10"

Outside

Garage Store
 Garden Shed

Tewkesbury Borough Council Tax Band E



This floorplan is provided for guidance only as an approximate layout of the property and should not be relied upon as a statement of fact.



Guide Price £425,000 Freehold

Viewing strictly by arrangement with Engall Castle Ltd
 155 High Street Tewkesbury Gloucestershire GL20 5JP
 Office hours: Mon – Fri 9am to 6pm, Sat 9am to 4pm
 email: sales@engallcastle.com

01684 293 246
www.engallcastle.com



Agents Note

These property details are set out as a general outline only and do not constitute any part of an Offer or Contract. Any services equipment, fittings or central heating systems have not been tested and no warranty is given or implied by Engall Castle Ltd that these are in working order. Buyers are advised to obtain verification from their solicitor or surveyor. Fixtures and fittings or other items are not included unless specifically described. All measurements, distances and areas are approximate and for guidance only and should not be relied upon for the purposes of fitting carpets or furniture etc. These property details and all statements within this document are provided without responsibility on behalf of Engall Castle Ltd or its employees or representatives and should not be relied on as statements of fact. Prospective purchasers must satisfy themselves as to the accuracy of all details pertaining to the property.

