



13a Hastings Road, Bexhill-on-Sea, East  
Sussex, TN40 2FQ

£550,000

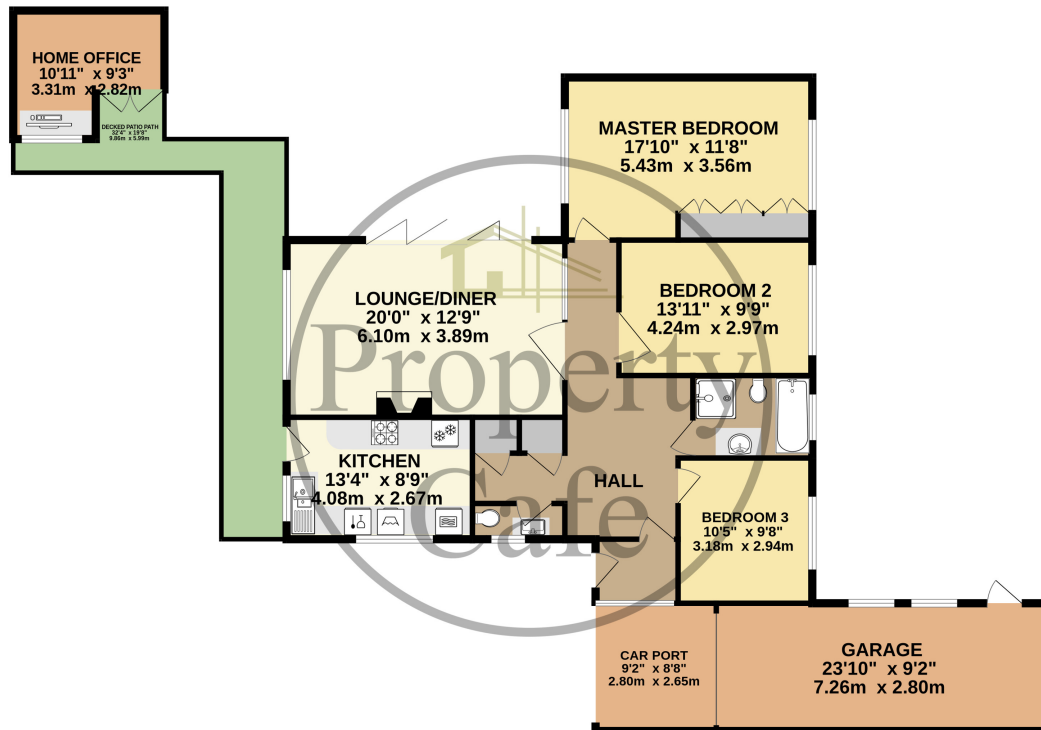


- Spacious detached three bedroom bungalow
- Highly sought after old town location
- Three good size double bedrooms
- Spacious lounge diner with fireplace and bifold doors
- Modern & Immaculate Decor Throughout
- Modern fitted kitchen and bathroom
- Additional Cloakroom/W.C
- Central heated and double glazed throughout
- Income producing solar panels
- Garden room/home office
- Timber built Arctic hub entertaining space
- Brick built barbecue and log store
- Lounge diner With log burner
- Substantial supply of seasoned logs
- Covered carport and secure garage
- Ample additional parking area
- Walking distance to Bexhill town centre
- Easy access to the old town and seafront





**GROUND FLOOR**  
**1469 sq.ft. (136.5 sq.m.) approx.**



TOTAL FLOOR AREA : 1469 sq.ft. (136.5 sq.m.) approx.  
 Whilst every attempt has been made to ensure the accuracy of the floorplan contained here, measurements of doors, windows, rooms and any other items are approximate and no responsibility is taken for any error, omission or mis-statement. This plan is for illustrative purposes only and should be used as such by any prospective purchaser. The services, systems and appliances shown have not been tested and no guarantee as to their operability or efficiency can be given.  
 Made with Metropix ©2024.

