



hastings
INTERNATIONAL

One The Elephant

£500,000

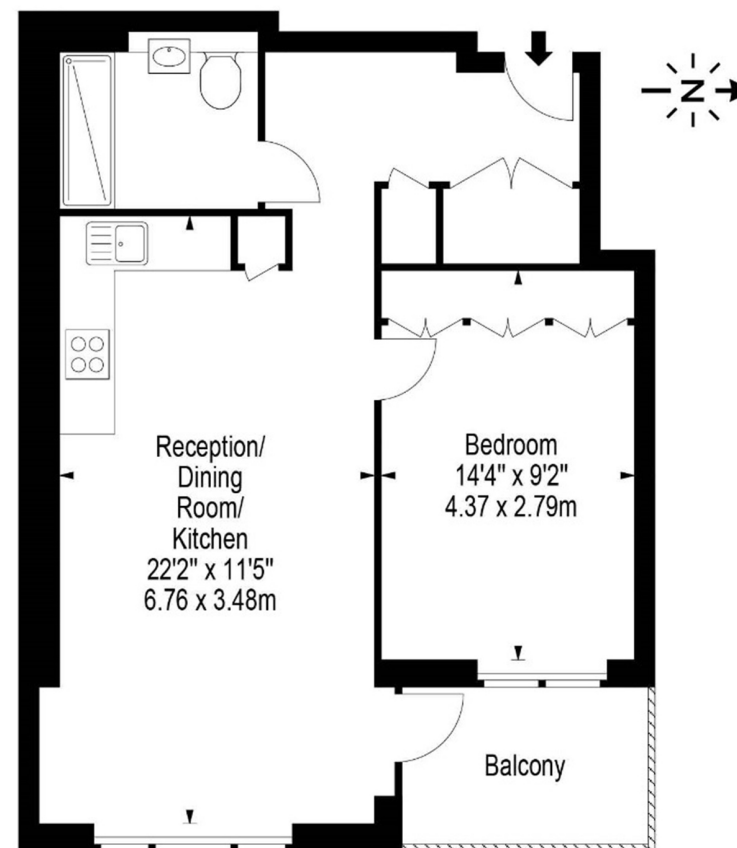
1 St Gabriel Walk SE1 6FA

A beautifully presented one bedroom apartment occupying part of the fifth floor within One The Elephant, a modern, sleek landmark development with 24hr concierge, fine views and high specification interior.

Occupying part of the fifth floor of a landmark modern development, this stunning apartment comprises entrance hall with storage and utility cupboards, impressive dual aspect reception room with access to private balcony providing fine views, stylish open plan fitted kitchen with stone work tops and Bosch integrated appliances, double bedroom with fitted wardrobes and contemporary bathroom. The apartment has the benefit of lift access, 24hr concierge and is located opposite Zone 1 underground station with London Bridge and Waterloo all being accessible nearby.

- One The Elephant SE1
- One Bedroom Apartment
- Fifth Floor
- High Specification Interior
- 535 Sq Ft
- Balcony
- 24Hr Concierge
- Excellent Location

One The Elephant, 1 St Gabriel Walk, SE1



Fifth Floor

Approx Gross Internal Area **535 Sq Ft - 49.70 Sq M**

Floor Plan Supplied For Identification Purposes Only And May Not Be Accurate
Floor Plan by www.elegantmediasolution.com





Energy Efficiency Rating		
	Current	Potential
Very energy efficient - lower running costs		
(92+) A		
(81-91) B	83	83
(69-80) C		
(55-68) D		
(39-54) E		
(21-38) F		
(1-20) G		
Not energy efficient - higher running costs		
England, Scotland & Wales	EU Directive 2002/91/EC	