



**6 North Way, Potterspury, Towcester,
Northamptonshire, NN12 7PW**

£300,000 Freehold

- Two/Three bedroom House
- Large front and private rear garden
- Garage
- Refitted kitchen
- Within the desirable location of Potterspury
- Chain Free
- EPC Rating





Entrance Hall

Cloakroom

Kitchen

4.77m x 2.41m (15' 8" x 7' 11")

Lounge

4.78m x 3.53m (15' 8" x 11' 7")

Dining Room

3.62m x 3.32m (11' 11" x 10' 11")

Utility

Family Bathroom

Bedroom One

4.29m x 3.46m (14' 1" x 11' 4")

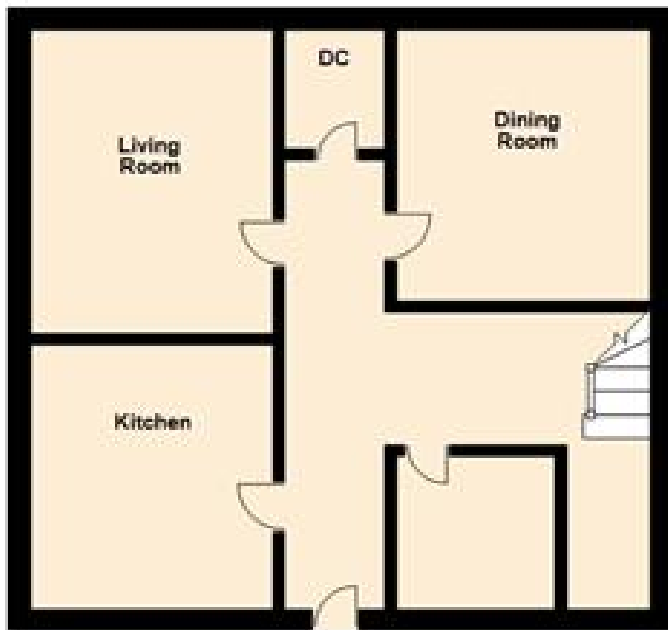
Bedroom Two

3.52m x 2.52m (11' 7" x 8' 3")

Disclaimer

Whilst we have endeavoured to prepare our sales particulars accurately none of the services, appliances or equipment have been tested. A buyer should satisfy themselves on such matters prior to purchase. Any measurements or distances mentioned in these particulars are for guide reference only. If such particulars are fundamental to a purchase, buyers should rely on their own enquiries. All enquiries should be directed to Elevation Estate Agents in the first instance.

Ground Floor



First Floor



Floor plans are for layout purposes only. Measurements are approximate and subject to inaccuracies.
Plan produced using PlanUp.