



**15 St Catherines Court, Rosefield Road, Staines-upon-Thames. TW18 4NH.**  
**2 Bedroom Apartment - £300,000 Share of Freehold**

# 15 St Catherines Court, Rosefield Road, Staines-upon-Thames, Surrey. TW18 4NH.

## 2 Bedroom Apartment - £300,000 Share of Freehold

**SHARE OF FREEHOLD | WELL PRESENTED & SPACIOUS TWO BEDROOM APARTMENT SITUATED IN THIS SOUGHT AFTER DEVELOPMENT IDEALLY LOCATED WITHIN MOMENTS OF STAINES TOWN CENTRE & MAINLINE TRAIN STATION. The property benefits from a spacious lounge/diner, modern fitted kitchen, two well-proportioned bedrooms, modern white bathroom suite, allocated parking and garage. No Onward Chain. Viewings Highly Recommended!**

### Key Features

**SHARE OF FREEHOLD**

**GARAGE**

**WITHIN MOMENTS OF TOWN CENTRE & MAINLINE TRAIN STATION**

**SOUGHT AFTER DEVELOPMENT**

**RESIDENTS PARKING**

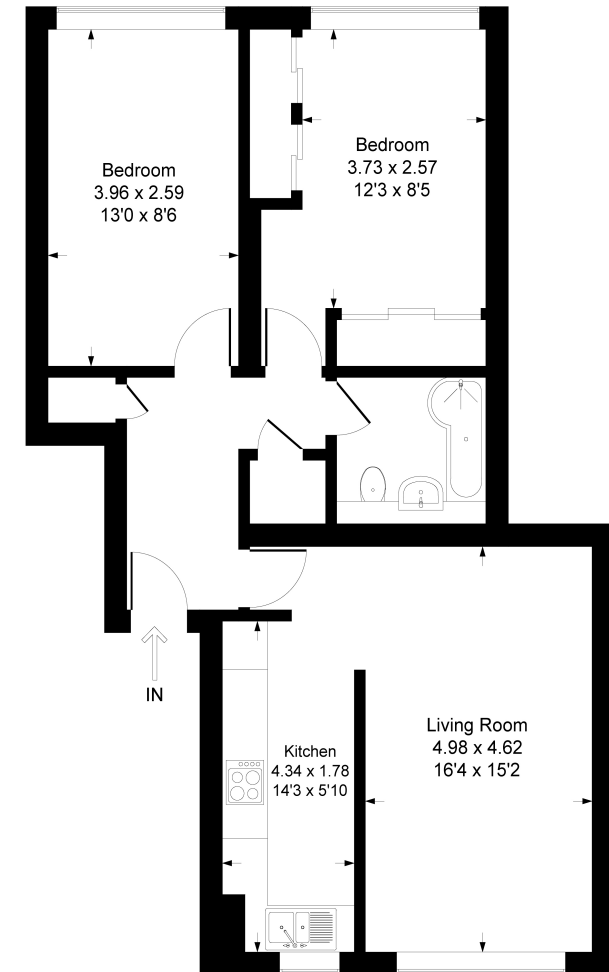
**WELL PRESENTED THROUGHOUT**



01784 451458

### Catherines Court, Staines-Upon-Thames, TW18 4NH

Approximate Gross Internal Area = 69.77 sq m / 751 sq ft



**Floor Plan**

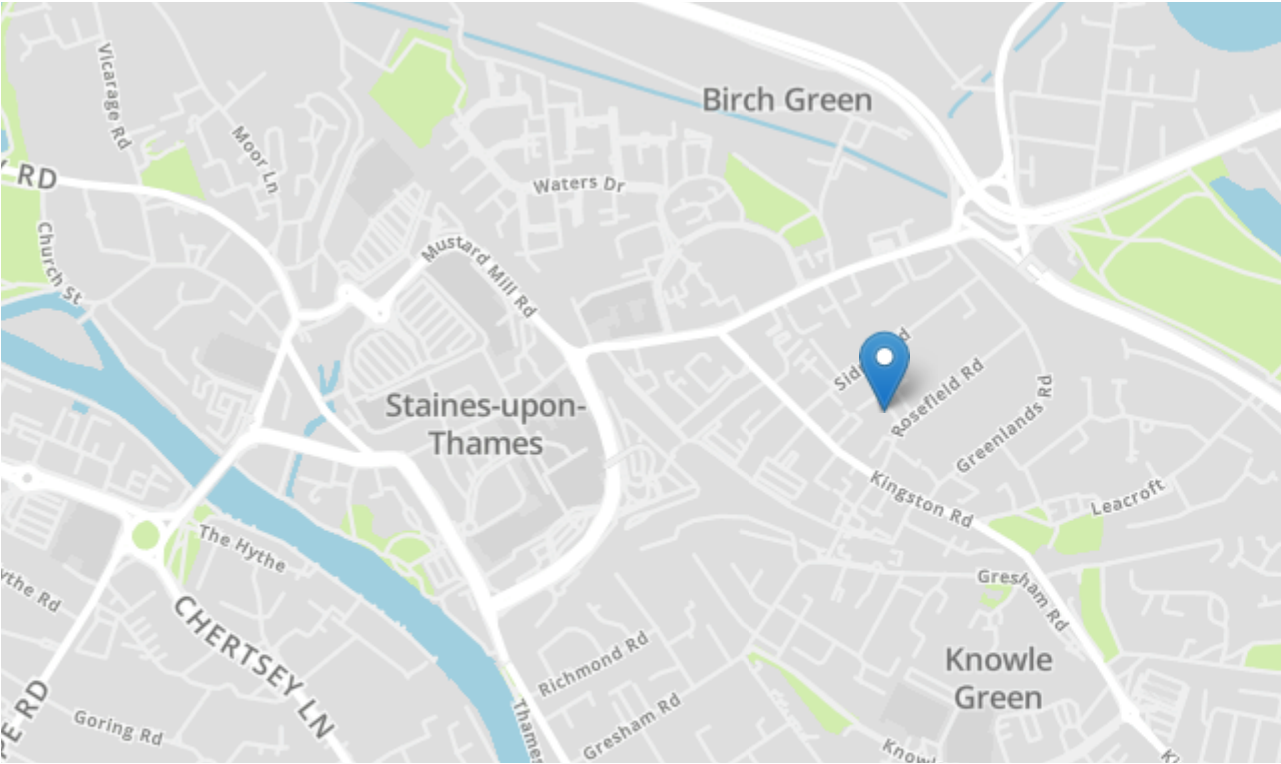
Illustration for identification purpose only, measurements approximate, and not to scale.





# 15 St Catherines Court, Rosefield Road, Staines-upon-Thames, Surrey. TW18 4NH.

gregory-brown.co.uk



Tenure	Share of Freehold
Lease Term	To Be Confirmed
Ground Rent	To Be Confirmed
Service Charge	To Be Confirmed
Local Authority	
Council Tax	

We have prepared these property particulars as a general guide to a broad description of the property. They are not intended to constitute part of an offer or contract. We have not carried out a structural survey and the services, appliances and specific fittings have not been tested. All photographs, measurements, floorplans and distances referred to are given as a guide only and should not be relied upon for the purchase of carpets or any other fixtures or fittings. Lease details, service charges and ground rents (where applicable) and council tax are given as a guide only and should be checked and confirmed by your solicitor prior to exchange of contracts. The copyright of all details, photographs and floorplans remain exclusive to Gregory Brown.

