



Stoughton Road
Oadby
Leicester
LE2

Offers In Excess Of £515,000

bettermove 

Stoughton Road Leicester

Bettermove are proud to present this 4 bedroom end of terrace house in Oadby.

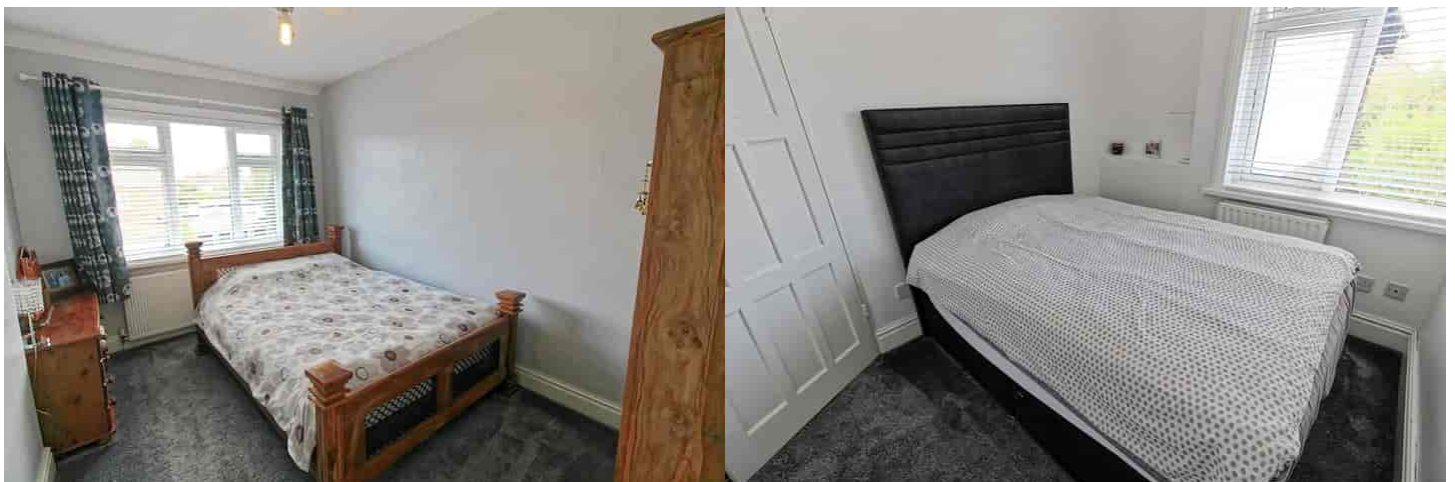
This property benefits from double glazing and gas central heating throughout, with off road parking available.

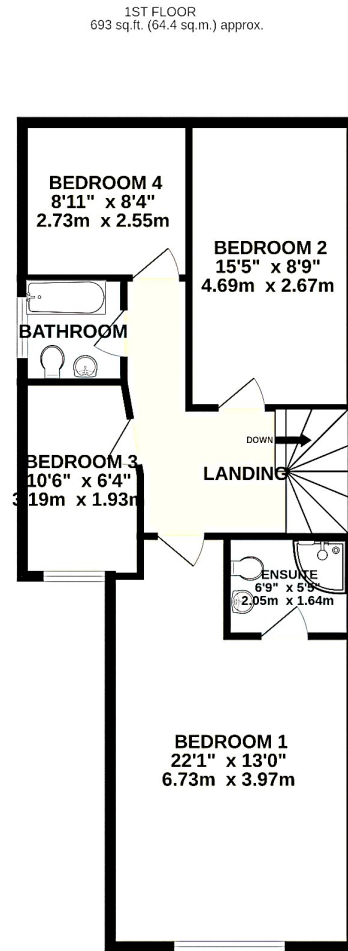
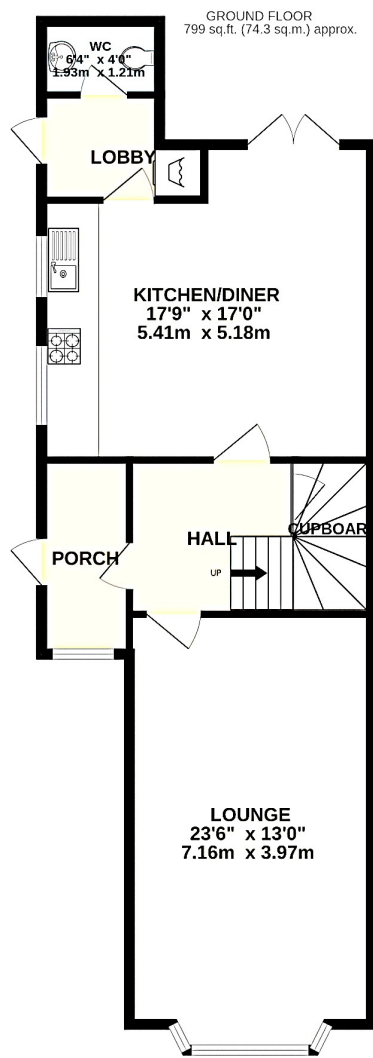
The council tax band is E.

The interior of this beautifully presented property comprises a spacious living room, open plan fitted kitchen/dining room, utility room/lobby and WC on the ground floor. The first floor consists of four bedrooms, with one en-suite and the family bathroom. The exterior boasts a detached garage, and a rear private garden, with both lawn and patio areas, perfect for enjoying the summer months.

Located in the popular town of Oadby, Leicester, the property is close to a range of amenities, including shops, supermarkets, restaurants and pubs. Excellent transport links can be found from South Wigston and Leicester Railway Stations, a variety of local bus routes, and close access to the A6.

This exciting opportunity should not be missed! All enquiries can be made through Bettermove on 0330 004 0050.







20-22 Bridge End, Leeds, LS1 4DJ
t: 0330 004 0050 e: hello@bettermove.co.uk
www.bettermove.co.uk