

Ashley Coombe

Warminster, BA12 9QU

COOPER
AND
TANNER



£365,000 Freehold

A three bedroom detached bungalow that has been upgraded to a high standard by the present owner and we strongly recommend an internal viewing. The home enjoys a corner position in the cul de sac and has views at the rear. A drive provides off street parking and a single garage. Landscaped gardens. Plans and quotations have been drawn up for an infill extension on the front elevation. Seller suited.

Ashley Coombe

Warminster

BA12 9QU

 3  1  1 EPC D

£365,000 Freehold

DESCRIPTION

A three bedroom detached bungalow that has been upgraded to a high standard by the present owner and we strongly recommend an internal viewing. The home enjoys a corner position in the cul de sac and has views at the rear. The accommodation in brief comprises entrance, lounge / dining room, kitchen, shower room, three bedrooms, gas central heating and double glazing. A drive provides off street parking and access to the single garage. Outside the are pleasing landscaped gardens. Plans and quotations have been drawn up for an infill extension on the front elevation. Seller suited. Seller suited. Viewing advised

OUTSIDE

A drive provides off street parking and access to the single garage. Outside there are pleasing landscaped gardens. Plans and quotations have been drawn up for an infill extension on the front elevation. Seller suited. Viewing advised.

LOCATION

The town of Warminster offers a wide range of shopping and leisure facilities to include library, sports centre, swimming pool, schools, churches, doctors' and dentists' surgeries, hospital and post office. Warminster also benefits from a main line railway station to London Waterloo whilst the nearby A303 provides excellent road links to London to the east and Exeter to the west. Local attractions include Longleat House and Safari Park, Shearwater Lake, Stourhead and Salisbury Plain.

COUNCIL TAX

Band D





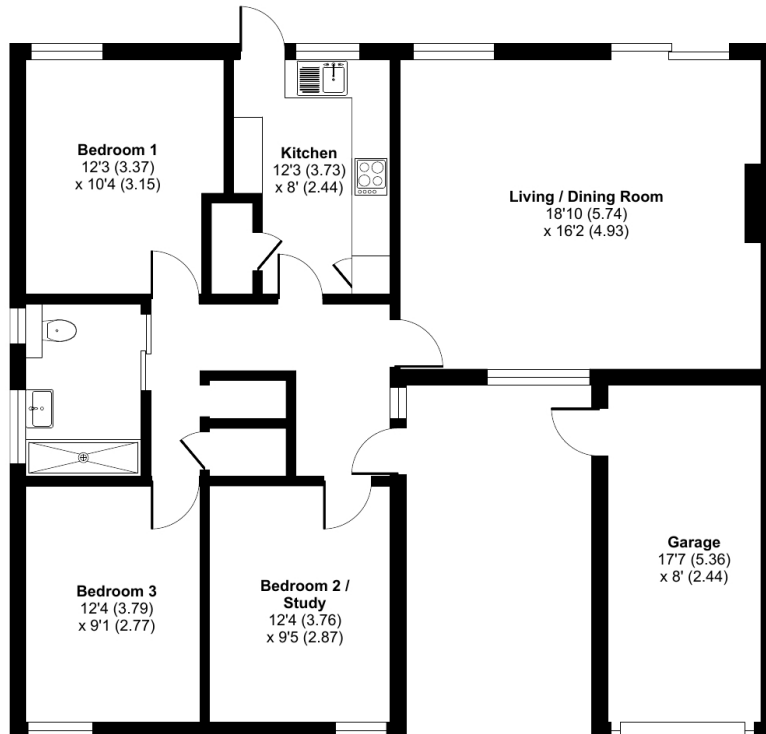
Ashley Coombe, Warminster, BA12

Approximate Area = 970 sq ft / 90.1 sq m

Garage = 141 sq ft / 13 sq m

Total = 1111 sq ft / 103.1 sq m

For identification only - Not to scale



GROUND FLOOR



Floor plan produced in accordance with RICS Property Measurement Standards incorporating International Property Measurement Standards (IPMS2 Residential). © nitchecom 2023. Produced for Cooper and Tanner. REF: 1033537

WARMINSTER OFFICE

Telephone 01985 215579

48-50, Market Place, Warminster, Wiltshire BA12 9AN

warminster@cooperandtanner.co.uk

**COOPER
AND
TANNER**

Important Notice: These particulars are set out as a general outline only for the guidance of intended purchasers and do not constitute, nor constitute part of, an offer or contract. All descriptions, dimensions, reference to condition and necessary permissions for use and occupation, warranties and other details are given without responsibility and any intending purchasers should not rely on the m as statements or representations of fact but must satisfy themselves by inspection or otherwise as to the correctness of each of them.

