

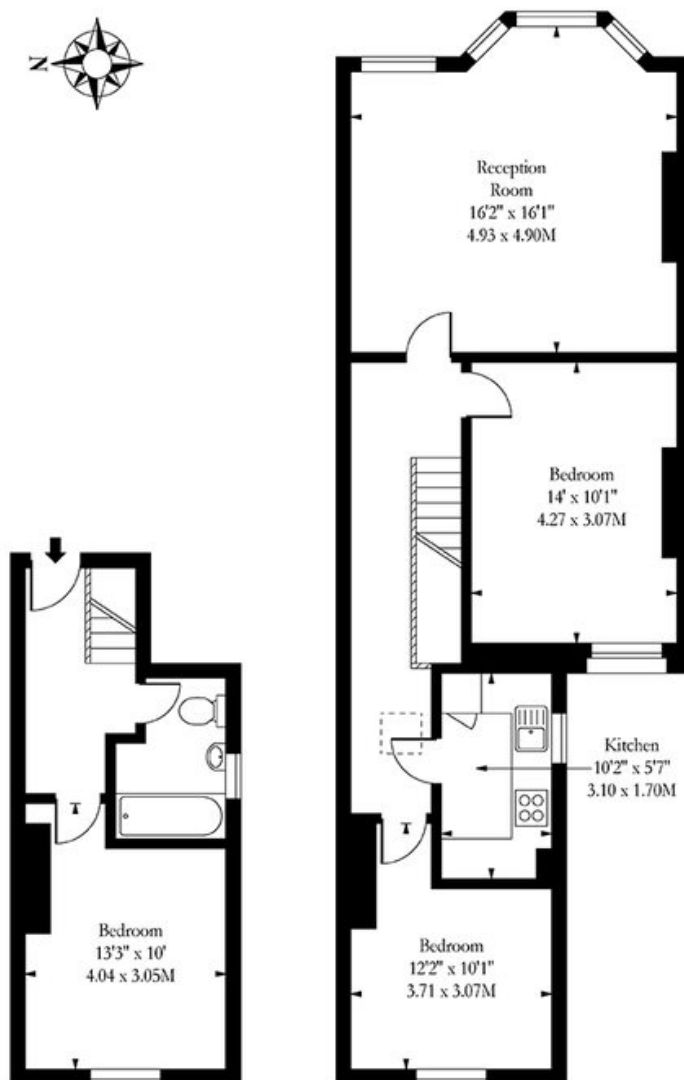


## 31 Gladys Road, London, NW6 2PU

£2,750 pcm

- Three Bedroom Duplex Flat
- Bright & Airy Throughout
- Close to Amenities & Transport Links of West Hampstead
- Fitted Kitchen
- Furnished
- Available Now

**Gladys Road, NW6**



Ground Floor

First Floor

Approx Gross Internal Area 868 Sq Ft - 80.64 Sq M

Measured in accordance with RICS guidelines. Every attempt is made to ensure accuracy  
However all measurements are approximate.  
The floor plan is illustrative purposes only and is not to scale

[www.tomekphotography.co.uk](http://www.tomekphotography.co.uk)

