

Tavistock Road, Worle, Weston-Super-Mare, Somerset.
BS22 6LS

£240,000 Freehold

FOR SALE



www.housefox.co.uk

01934 314242
01275 404601
01278 557700
sales@housefox.co.uk

PROPERTY DESCRIPTION

HOUSE FOX ESTATE AGENTS PRESENTS.....A terraced house with a large garden and within walking distance of Worle High Street.

Set within minutes walk of the High Street with its array of shops, cafes, convenience stores, bank, chemist, public houses, takeaways and restaurants, another big plus, is the bus stop to Bristol and Weston super Mare is literally only a few hundred yards away.

The house is a staggered mid terraced home and comprises, hallway, lounge, kitchen/diner, utility area, 3 bedrooms, bathroom, separate WC, double glazing, warm air central heating, and a lovely large garden.

So if you love spending time in the garden, want to be close to shops, need 3 bedrooms, then look no further and call House Fox Estate Agents

FEATURES

- WALK THROUGH 360 VIDEO TOUR AVAILABLE
- Staggered terraced house
- 3 bedrooms
- Large garden
- Kitchen/diner
- Double glazing
- Close to Worle High Street
- EPC-tbc



ROOM DESCRIPTIONS

Main front door to the hallway

Hallway:

Stairs to the first floor, doors to the lounge, kitchen/diner and utility area

Lounge:

Double glazed window, warm air vent

Kitchen/diner:

Sink unit, floor and wall units, double glazed window, boiler

Utility area;

Great area for storage, a freezer etc.....door to the garden

First floor landing:

Loft access

Bedroom 1:

Double glazed window

Bedroom 2:

Double glazed window

Bedroom 3:

Double glazed window

Bathroom:

Bath, wash hand basin, double glazed window

Separate WC

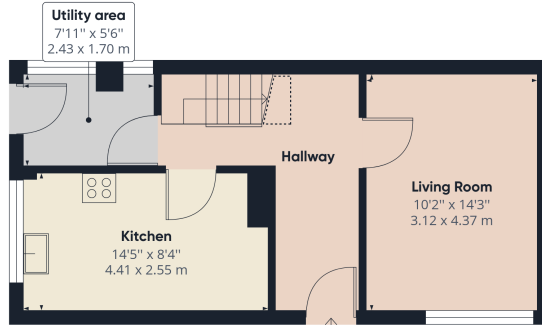
Low level WC, wash hand basin

Garden:

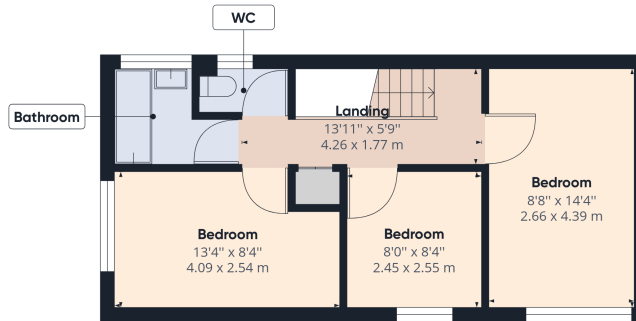
WOW....what an incredible sized garden, mainly laid to lawn, patio area, shrub and flower borders, rear gate access



FLOORPLAN & EPC



Floor 0



Floor 1



Approximate total area⁽¹⁾

828.62 ft²
76.98 m²

Reduced headroom

9.75 ft²
0.91 m²

(1) Excluding balconies and terraces

Reduced headroom
(below 1.5m/4.92ft)

While every attempt has been made to ensure accuracy, all measurements are approximate, not to scale. This floor plan is for illustrative purposes only.

GIRAFFE360