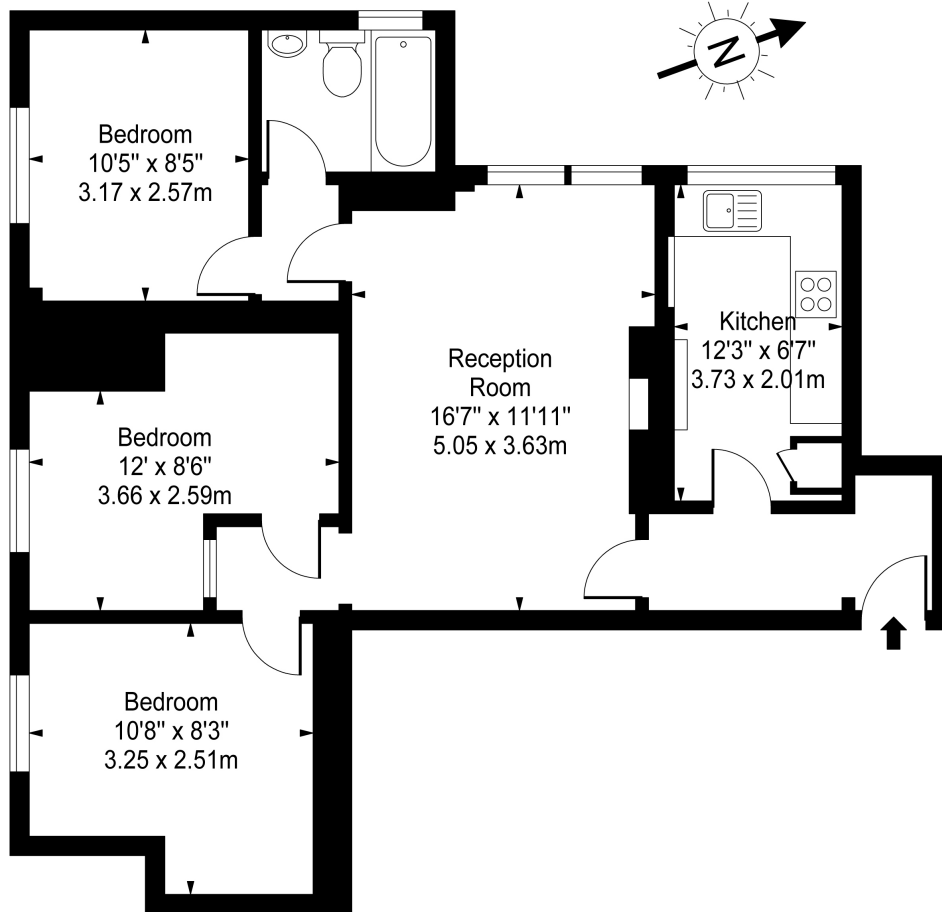


Beacon House, Hemstal Road, London, NW6

£2,250 pcm

- Three Double Bedrooms
- One Bathroom
- Stunning Park Views
- Heating and Hot Water Included in Rent
- Separate Fitted Kitchen
- Third Floor

Beacon House, Hemstal Road, NW6 2AG



Approx Gross Internal Area **743 Sq Ft - 69.02 Sq M**

For Illustration Purposes Only - Not To Scale
www.tomekphotography.co.uk

