



**6 Clare Road, Stanwell, Staines-upon-Thames, Surrey. TW19 7QG.**  
3 Bedroom End of Terrace House - £500,000 OIEO Freehold

# 6 Clare Road, Stanwell, Staines-upon-Thames, Surrey. TW19 7QG.

01784 451458

## 3 Bedroom End of Terrace House - £500,000 OIEO Freehold

WELL PRESENTED AND SPACIOUS THREE BEDROOM END-TERRACED PROPERTY SITUATED ALONG MUCH SOUGHT AFTER ROAD IDEALLY LOCATED FOR EASY ACCESS TO BOTH STAINES & ASHFORD TOWN CENTRES, LOCAL MOTORWAY NETWORKS & HEATHROW AIRPORT. The property is well presented throughout and benefits from a spacious lounge, modern fitted kitchen, dining room, three well-proportioned bedrooms, modern white bathroom suite, large secluded rear garden and off-street parking. Viewings Highly Recommended!

### Key Features

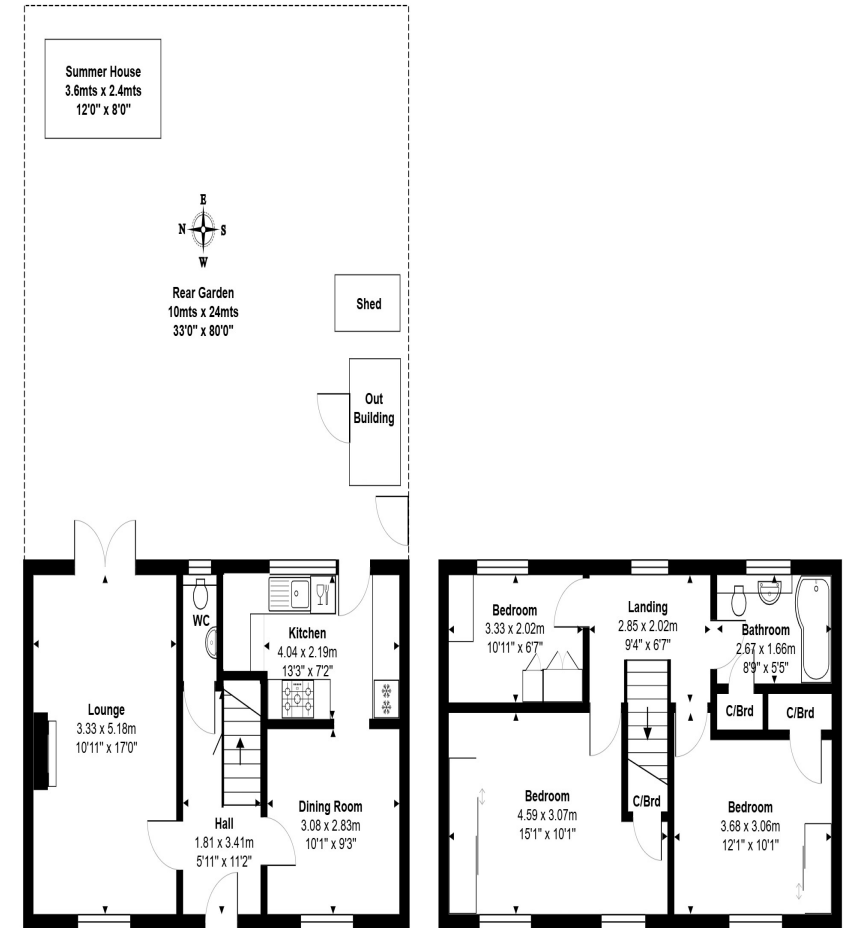
END-TERRACED

IDEAL FOR LOCAL MOTORWAY NETWORKS & HEATHROW AIRPORT

CLOSE TO LOCAL SHOPS & SCHOOLS

WELL PRESENTED & SPACIOUS

OFF-STREET PARKING



Total Area: 90.5 m<sup>2</sup> ... 974 ft<sup>2</sup>

All measurements are approximate and for display purposes only.



**GREGORY BROWN**  
RESIDENTIAL SALES & LETTINGS





# 6 Clare Road, Stanwell, Staines-upon-Thames, Surrey. TW19 7QG.

[gregory-brown.co.uk](http://gregory-brown.co.uk)



Tenure **Freehold**  
Lease Term  
Ground Rent  
Service Charge  
Local Authority  
Council Tax

We have prepared these property particulars as a general guide to a broad description of the property. They are not intended to constitute part of an offer or contract. We have not carried out a structural survey and the services, appliances and specific fittings have not been tested. All photographs, measurements, floorplans and distances referred to are given as a guide only and should not be relied upon for the purchase of carpets or any other fixtures or fittings. Lease details, service charges and ground rents (where applicable) and council tax are given as a guide only and should be checked and confirmed by your solicitor prior to exchange of contracts. The copyright of all details, photographs and floorplans remain exclusive to Gregory Brown.

