



Manitoba Close



Manitoba Close

Worcester

Offers in Region of £300,000

Positioned within a quiet Cul-De-Sac location is this three bedroom bungalow offering good access in and out of Worcester and local amenities nearby. The bungalow comprises, entrance hall, sitting room/diner, kitchen, shower room and three bedrooms. The house is offered for sale with no onward chain.

We've Noticed

- **Detached bungalow**
- **Three bedrooms**
- **Driveway & garage**
- **Large reception room**
- **No onward chain**



Entrance

Through side entrance door into hall with further doors into sitting room/diner, kitchen and bedroom one and two.

Sitting Room/Diner

With rear aspect double glazed sliding doors to the rear garden, radiators, fireplace and doors into kitchen as well as rear bedroom.

Kitchen

With matching wall and base units with work surfaces over, sink and drainer with mixer tap, side aspect double glazed window and door. Space for cooker, washing machine and upright fridge/freezer.

Bathroom

With side aspect double glazed window, WC, wash hand basin, shower and opening to airing cupboard room.

Bedroom 1

With front aspect double glazed window and radiator.

Bedroom 2

With front aspect double glazed window and radiator.

Bedroom 3

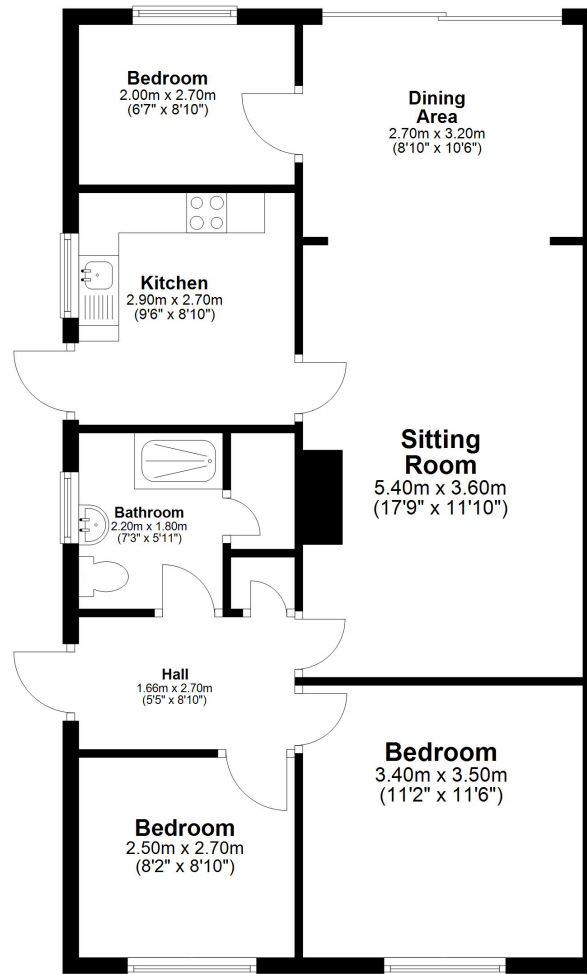
With rear aspect double glazed window and radiator.


Outside

The property is approached via a long driveway leading to garage and side entrance door. To the rear is a low maintenance rear garden with fenced and walled boundaries.



Ground Floor



Energy Efficiency Rating		
	Current	Potential
Very energy efficient - lower running costs		
(92+) A		80
(81-91) B		
(69-80) C		
(55-68) D		
(39-54) E		
(21-38) F	61	61
(1-20) G		
Not energy efficient - higher running costs		
England, Scotland & Wales		EU Directive 2002/91/EC 

46 Foregate Street, Worcester WR1 1EE

Tel: 01905 723545 info@hillsestateagents.co.uk

www.hillsestateagents.co.uk

These particulars, whilst believed to be accurate are set out as a general outline only for guidance and do not constitute any part of an offer or contract. Intending purchasers should not rely on them as statements or representation of fact, but must satisfy themselves by inspection or otherwise as to their accuracy. We have not carried out a detailed survey nor tested the services, appliances and specific fittings. Room sizes should not be relied upon for carpets and furnishings. The measurements given are approximate. No person in this firm's employment has the authority to make or give any representation or warranty in respect of the property.

