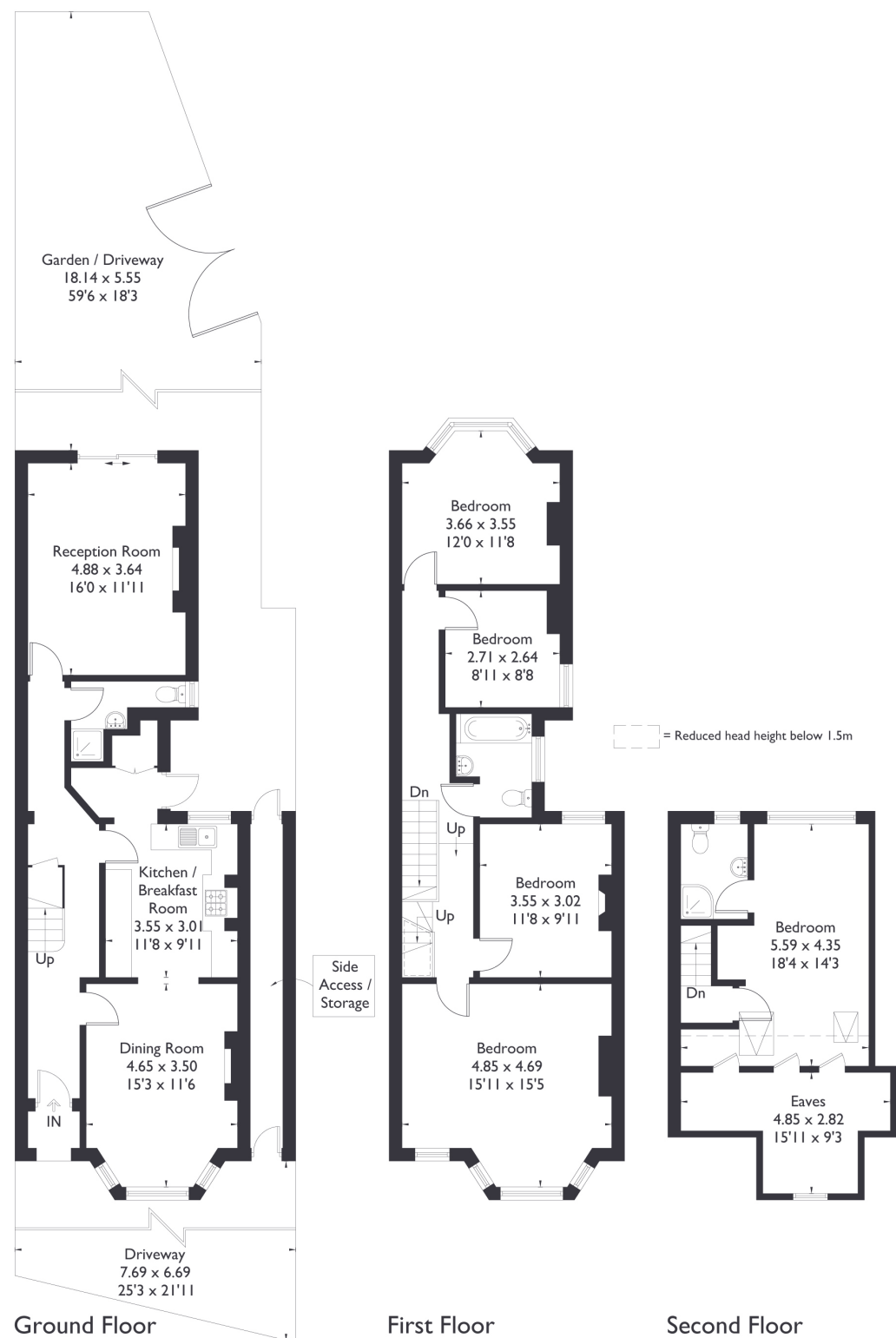


Drayton Green, W13

Approximate Floor Area = 169.1 sq m / 1820 sq ft
(Including Eaves)

Side Access / Storage = 5.8 sq m / 62 sq ft

Total = 174.9 sq m / 1882 sq ft



5 BEDROOM HOUSE

Drayton Green, W13

£1,300,000

Welcome to this stunning five bedroom, three bathroom semi-detached home in the heart of Ealing.

Generously proportioned throughout, this gorgeous property offers spacious living and an abundance of original features, blending character with fantastic potential to modernise and personalise to your taste. The home benefits from two off-street parking spaces at the front, along with a gated rear entrance and dropped curb—offering flexibility and additional access options.

FEATURES

- Five Bedrooms
- Three Bathrooms
- West Facing Garden
- Off Street Parking for Two Cars
- Drayton Green Station
- West Ealing Station (Elizabeth Line)
- Drayton Manor High School
- EPC Rating D



5 BEDROOM HOUSE

Drayton Green, W13
£1,300,000

A beautiful west-facing garden ensures you'll enjoy afternoon and evening sunshine, perfect for relaxing or entertaining.

Situated close to both Drayton Green and West Ealing stations (Elizabeth Line), the property offers excellent connectivity into the City.

It also falls within the catchment area for the highly regarded Drayton Manor High School. This is a rare opportunity to acquire a substantial family home in a sought-after location with scope to truly make it your own.

EPC Rating D.

