



Established Since 1910

**0208 715 0555**

*A Name Friends Recommend*



## Palmerston Road, Wimbledon, SW19 1PG

**£1,100,000**

**Freehold**

4 Bedroom Terrace House For Sale



[www.crossprior.co.uk](http://www.crossprior.co.uk)



## PROPERTY DETAILS

- Victorian Terrace House
- A Wonderful Family Home
- Excellent Location
- A Low Maintenance Garden
- 4 Double Bedrooms
- 2 Spacious Reception Rooms
- 3 Contemporary Bathrooms
- A Delightful Conservatory
- Excellent Local Schools
- Freehold
- Chain Free
- EPC Rating = D

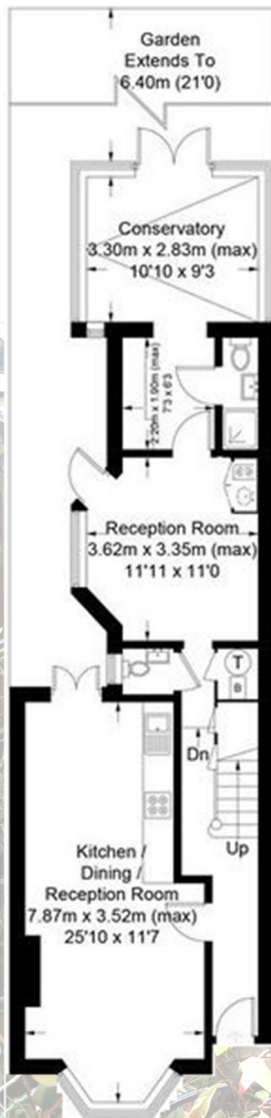




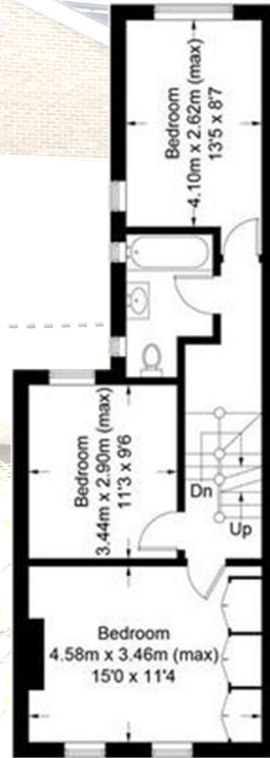




## GROUND FLOOR



## FIRST FLOOR



## SECOND FLOOR



**TOTAL APPROX. FLOOR AREA: 156 SQ.M. / 1679 SQ.FT.**  
(communal areas not shown)

Cross & Prior endeavour to maintain accurate depictions of properties in Floor Plans and descriptions, however, these are intended only as a guide and purchasers must satisfy themselves by personal inspection.



*Established Since 1910*

## CONTACT

103 High Street, Colliers Wood,  
London SW19 2JF

[enquiries@crossprior.co](mailto:enquiries@crossprior.co)  
[www.crossprior.co.uk](http://www.crossprior.co.uk)

**0208 715 0555**

## VIEWING ARRANGEMENTS

Strictly by appointment with  
Cross & Prior

