



Belgrave Road | Billericay | £315,000



Belgrave Road

Billericay | Essex | CM12 0TX

The Property Specialists of Billericay are delighted to offer for sale this beautifully presented one bedroom house, which is located in a prime location, conveniently situated within a short walk of local shops, Lake Meadows Park and Billericay railway station station with it's routes to London Liverpool Street. This fantastic property boasts an extension to the ground floor providing the home with the bonus of a living room with dining area backing onto the secluded South West facing garden. The kitchen is great size with a range of fitted units and space for all your essential appliances, including space for dishwasher, washing machine and fridge freezer and there is a good size under stairs storage cupboard. On the first floor there is a landing with access to good size loft space, with a large walk-in storage wardrobe which houses the combination boiler which features a double hanging rail and shelving space. The bedroom is an amazing double bedroom, again with built in storage wardrobe with double hanging rail. The bathroom is fully tiled and has a modern fitted three piece suite with a bath with heated towel rail and shower over the bath, all served with instant hot water on demand from the combination boiler. Outside the property there is one allocated parking space and the property has the added advantage of a front and rear private garden with the rear garden benefitting from a sunny south west facing garden.

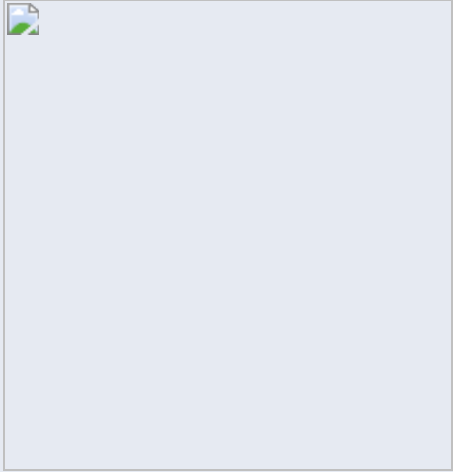
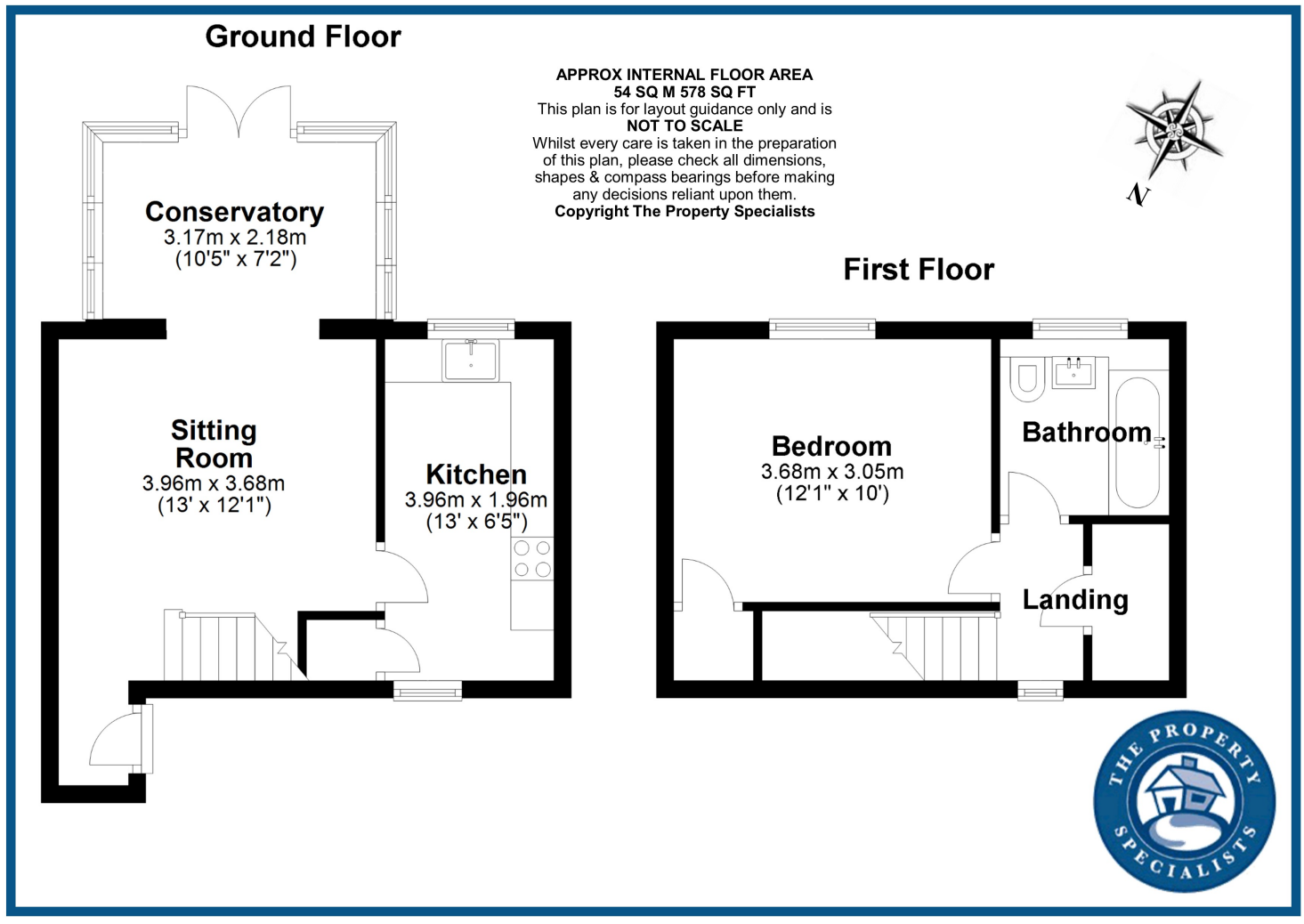
An internal viewing is strongly advised to fully appreciate the size and space on offer.





- One Double Bedroom Spacious House
- Perfect First Time / Investment Purchase
- Within 1 Mile of Billericay High Street and Train Station
- Living Room Opening up To Dining Area
- Fitted Kitchen With Space For Many Appliances
- Large Double Bedroom With Storage Wardrobe
- Three Piece Bathroom With Shower Over The Bath
- Gas Central Heating With Combination Boiler
- One Allocated Parking Space
- Beautifully Decorated and Newly Fitted Carpets
- Front and Rear Garden (Sunny South Facing Rear Garden)
- Close To Lake Meadows Park





Viewing strictly by appointment with The Property Specialists



Making Moving Home
Less Stressful

135 High Street, Billericay,
Essex, CM12 9AB
Tel: 01277 654446
sales@thepropertyspecialists.co.uk