



Tel: 01242 676767

www.cotswoldestateagents.co.uk

41a Church Road, Bishops Cleeve, Cheltenham, GL52 8LP

Ashton Court Flat 1, Church Road
Bishops Cleeve GL52 8DG

£175,000



FOR SALE

Set in the heart of the village is this smart purpose built two bedroom ground floor apartment. The well planned living accommodation features open plan lounge/dining/kitchen with built-in and integrated appliances, modern bathroom suite and two bedrooms. To the exterior there is a small patio area and allocated off road parking for one vehicle. The property is just a stones throw for welcoming village inns, post office, butchers, cafes, restaurants and shopping facilities to name a few. No onward chain.

Entrance hall with wooden parquet flooring and doors to open plan lounge/dining/kitchen, bathroom and bedrooms one and two. lounge/dining/kitchen: window to front and rear aspect and French doors to patio, kitchen fitted with a matching range of eye and base level storage units with built-in and integrated appliances to include fridge-freezer, fan assisted oven, ceramic hob and extractor hood, space and plumbing for washing machine, tv point, built-in airing cupboard housing hot water cylinder and emersion switch. Bathroom: modern white suite comprising bath with tiled splashbacks fitted with shower unit and shower screen, wash hand basin, WC, ceramic tiled flooring. Bedroom one: window to front aspect with views to village church. Bedroom two: window to rear aspect.

Exterior: The proper benefits from bike parking, enclosed bin store and allocated off road parking.

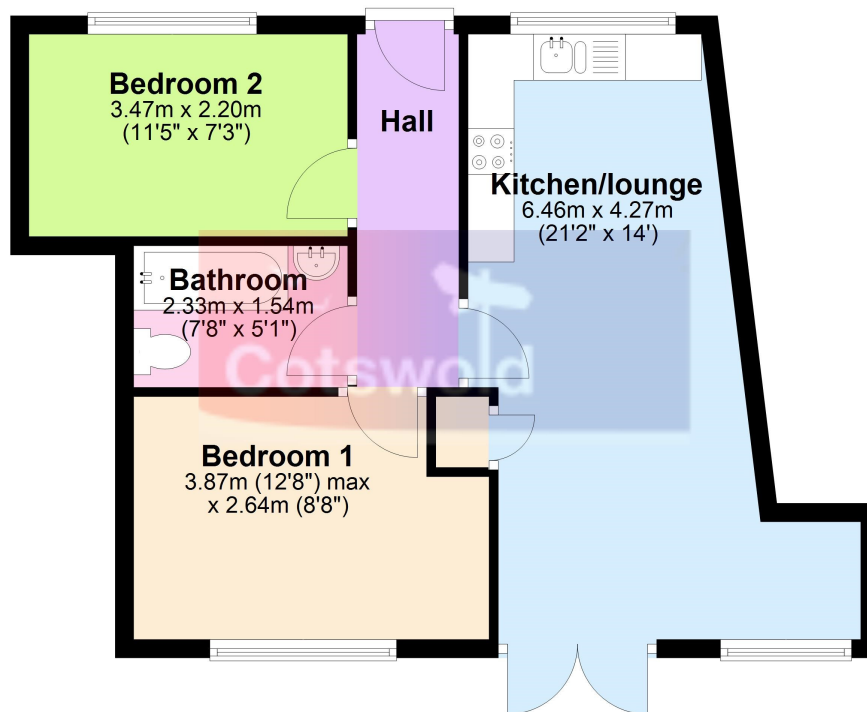






Ground Floor

Approx. 46.8 sq. metres (503.8 sq. feet)



Total area: approx. 46.8 sq. metres (503.8 sq. feet)

Energy Efficiency Rating		
	Current	Potential
Very energy efficient - lower running costs		
(92+) A		
(81-91) B		
(69-80) C		80
(55-68) D	60	
(39-54) E		
(21-38) F		
(1-20) G		
Not energy efficient - higher running costs		
England, Scotland & Wales		
EU Directive 2002/91/EC		