





A large, detached family home, occupying a splendid semi-rural location with beautiful landscaped gardens and open countryside views to the rear.

- Large Detached Family Home
- Three Reception Rooms
- Kitchen, Breakfast Room & Utility Room
- Five Bedrooms
- Two Bath/Shower Rooms
- Beautiful Landscaped Gardens
- Double Garage & Driveway

Description

A large, detached family home, occupying a splendid semi-rural location with beautiful, large landscaped gardens and open countryside views to the rear. The property has been in the current owners occupation since it was built in the 1970's. Improvements have been made over the years, including an extension to the front and there is now considerable scope for further improvement and development. Comprises: Reception porch, entrance & inner hallways, lounge, dining room, sitting room, kitchen, breakfast room, utility room, WC, first floor landing, five bedrooms, en-suite shower room and bathroom. To the front there is an attached double garage and extensive driveway with parking for several cars. The rear garden is mostly laid to lawn and features a large covered seating area ideal for alfresco dining.



Location

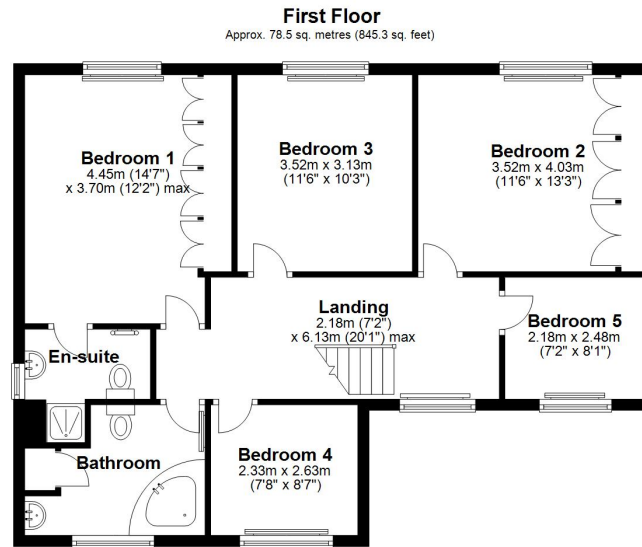
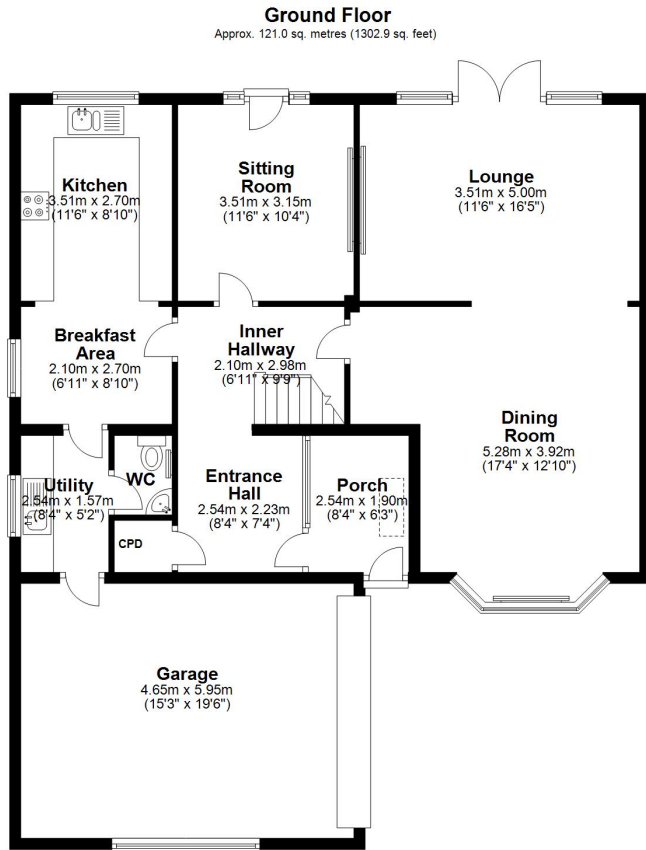
Acton Bridge is a small village, located to the west of Northwich and the A49. Local amenities are available in nearby Weaverham, where there is a shopping parade with a good variety of shops and other facilities. There is a local primary school in Crowton and others available in Weaverham, where the local high school is located. Acton Bridge has its own railway station on the West Coast Main Line enabling access to London within two hours. Trains to Manchester and Chester run from Cuddington and Delamere. The accessible motorway network easily facilitates travel to Manchester and Liverpool with their respective airports 16 and 21 miles. Nearby Frodsham and Northwich cater for a more comprehensive range of amenities, including leading supermarkets with Waitrose, Sainsbury's and Tesco all represented.

Tenure

FREEHOLD

EPC Rating:





Total area: approx. 199.6 sq. metres (2148.1 sq. feet)