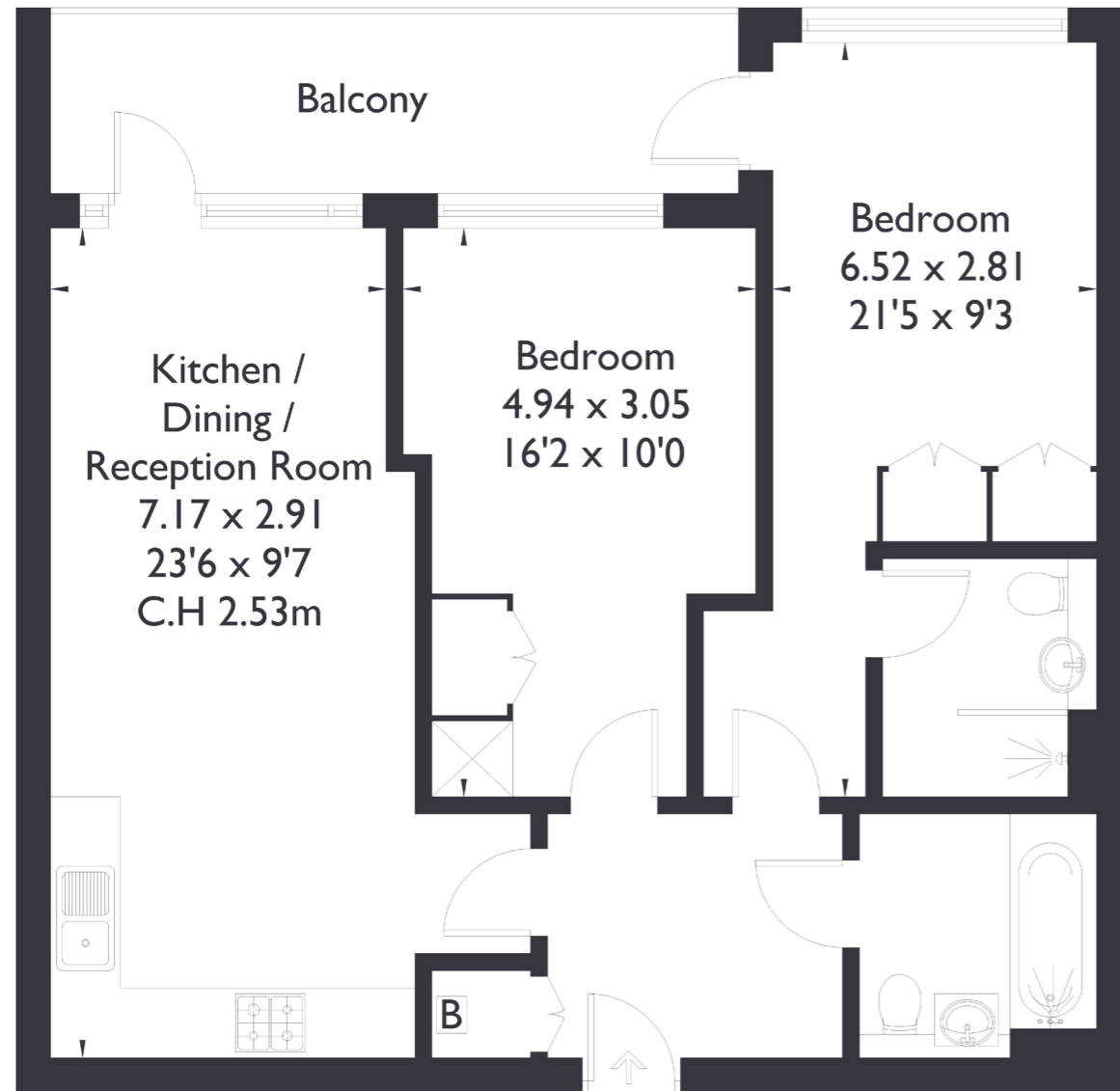


Eltham Court, Berwick Close London W13

Approximate Floor Area = 69.2 sq m / 745 sq ft



**First Floor**



2 BEDROOM FLAT

**Berwick Close, W13**  
**£595,000**

Welcome to this modern two bedroom, two bathroom flat in West Ealing, featuring a bright and airy interior with abundant natural light and a private balcony. Beautifully presented with contemporary finishes, this property is ideally located near Ealing's amenities and the Elizabeth Line.

Lovingly looked after by the current owner, it's the perfect home.

**FEATURES**

- Two Bedrooms
- Two Bathrooms
- Open Plan Kitchen/Dining
- Private Balcony
- Ealing Broadway Amenities (15 Min Walk)
- West Ealing Station (Elizabeth Line)
- EPC Rating B



2 BEDROOM FLAT

## Berwick Close, W13

This property boasts a stunning interior with plenty of room for storage, it seamlessly combines style and practicality for comfortable living.

Just a 15-minute walk to Ealing Broadway's vibrant bars, restaurants, and shops, the flat is also within the catchment area for the highly regarded St. John's Primary School, making it a perfect blend of style, convenience, and location. EPC Rating B.

