

REDUCED



36 Norfolk Street, Worksop, Nottinghamshire S80 1LF

£100,000 - Freehold



78, Bridge Street, Worksop, S80 1JA 01909 509001 [info@bartropanddilks.co.uk](mailto:info@bartropanddilks.co.uk)

## PROPERTY SUMMARY

**\*NEW TO LET\*\*** short term 6 months tenancy available with an internal inspection being recommended is this attractively decorated and well presented two bedroom stone fronted mid terrace home that has gas central heating and uPVC double glazed windows. Being ideally placed for the town centre, the property accommodation comprises of; lounge, well fitted kitchen with trap door to the cellar, rear lobby, downstairs bathroom that is fitted in a white modern suite. On the first floor; landing area, two double bedrooms. Outside; split level garden with secluded patio area, three outbuildings. Viewing Strongly Advised. Bond £778

## POINTS OF INTEREST

- *Viewing Highly Recommended*
- *Attractively Decorated*
- *Well Presented*
- *Close To All Amenities*
- *Two Bedroom*
- *Mid Terrace Home*
- *Gas Central Heating*
- *uPVC Double Glazed*
- *Attractive Garden*
- *6 month short term tenancy*



## ROOM DESCRIPTIONS

### Ground Floor

#### Lounge 3.85m x 3.52m (12' 8" x 11' 7")

With entrance door, front facing window, feature fireplace with electric fire, central heating radiator.

#### Kitchen 3.12m x 2.54m (10' 3" x 8' 4")

With a good range of fitted wall and base units, worksurfaces, sink unit, built in gas hob with extractor above and electric oven below, rear facing window, enclosed plumbing for an automatic washing machine, understairs storage with sealed cellar head, tiled floor.

#### Rear Lobby

With door to the rear yard and garden, stairs to the first floor.

#### Bathroom

Fitted in a modern white suite that comprises of; panelled bath, wash hand basin, low flush w.c, rear facing window, tiling to splashback, central heating radiator.

### First Floor

#### Landing Area

With a rear facing window.

#### Bedroom One 3.90m x 3.68m (12' 10" x 12' 1")

With a front facing window, central heating radiator, storage and fitted wardrobe space.

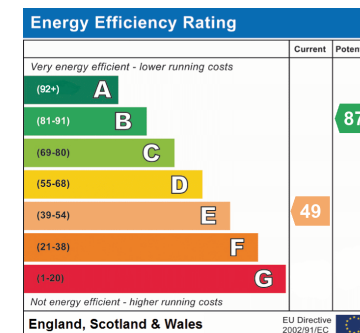
#### Bedroom Two 3.01m x 2.62m (9' 11" x 8' 7")

With a rear facing window, wall mounted gas fired central heating boiler, central heating radiator.

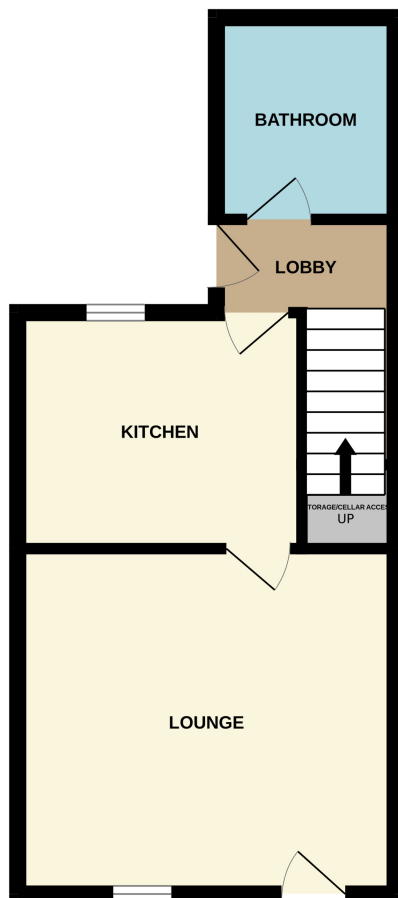
### Outside

#### Rear Garden

Split level rear garden with four outhouses. Steps lead to the low maintenance style garden area with secluded patio areas providing private seating and entertainment area.



GROUND FLOOR



1ST FLOOR

