

FOR
SALE



11 Romsey Drive, Belmont, Hereford HR2 7YH

£159,995 - Freehold

22, Broad Street, Hereford, HR4 9AP 01432 355455 hereford@flintandcook.co.uk

PROPERTY SUMMARY

Peacefully situated in this popular residential location, a well maintained 1 bedroom end of terrace house offering ideal first time buyer accommodation. The property which is offered for sale with no onward chain has the added benefit of gas central heating, double glazing, off road parking, private rear garden and we recommend an internal inspection.

POINTS OF INTEREST

- *Popular residential location*
- *1 bedroom end-terraced house*
- *Lounge, kitchen & conservatory*
- *Private rear garden*
- *Ideal for first time buyers*
- *No Onward Chain*



ROOM DESCRIPTIONS

Entrance Porch

With an updated entrance door, meter cupboard, electric light, coathooks, storage space, double glazed window and partially double glazed entrance door through to the

Lounge

With feature flooring, radiator, double glazed window to the front aspect with vertical blinds, coved ceiling, carpeted staircase to the first floor, fire surround with hearth and gas connection point, central heating thermostat and glazed panelled door to the

Kitchen

With single drainer sink unit with mixer tap over, range of wall and base cupboards, ample work surfaces with splash backs, feature flooring, radiator, coved ceiling, built in oven and 4 ring gas hob with cooker hood over, space and plumbing for automatic washing machine, space for tumble drier and upright fridge/freezer, glazed panelled door to the

Conservatory

A brick and aluminium double glazed construction with feature flooring, vertical blinds, opening windows, water tap, electric light point and a single door to the rear garden.

First Floor Landing

With fitted carpet, radiator and door to

Bedroom

With fitted carpet, radiator, double glazed window to the front aspect with roller blind, a range of fitted wardrobes, access hatch to the loft space.

Shower Room

With a large double walk in shower with rainwater style shower head over and glazed screen, low flush WC, pedestal wash hand basin, ladder style radiator/towel rail, double glazed window with vertical blinds, tiled floor, partially tiled wall surround and airing cupboard with shelving and also housing the Worcester gas central heating boiler.

Outside

To the front of the property there is a covered parking space and a pathway to the side providing access to the rear.
the rear garden is mainly laid to lawn with a useful timber garden shed and well enclosed by high fencing to maintain privacy.

Services

Mains water, electricity, drainage and gas are connected. Gas-fired central heating.

Outgoings

Council tax band B - £1,786.07 payable for 2024/2025
Water and drainage rates are payable.

Directions

Proceed south out of Hereford city centre on the A465 (Belmont Road), at the roundabout take the 4th exit onto Abbotsmead Road, then 2nd left into Romsey Drive.

Viewings

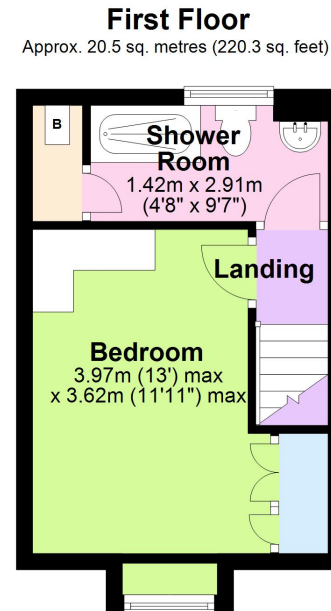
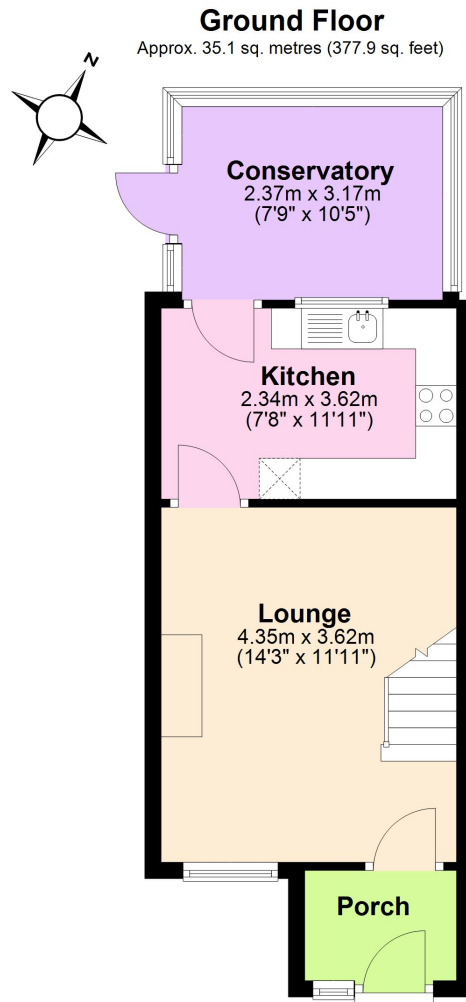
Strictly by appointment through the Agent, Flint & Cook, Hereford (01432) 355455.

Opening Hours

Monday - Friday 9.00 am - 5.30 pm
Saturday 9.00 am - 1.00 pm

Money Laundering Regulations

Prospective purchasers will be asked to produce identification, address verification and proof of funds at the time of making an offer.



Total area: approx. 55.6 sq. metres (598.2 sq. feet)
11 Romsey Drive, Belmont, Hereford

These particulars are prepared for the guidance only of prospective purchasers. They are intended to give a fair and overall description of the property and do not constitute the whole or any part of an offer or contract. Any information contained herein (whether in text, plans or photographs) is given in good faith but should not be relied upon as being a statement or representation of fact. Any plans provided by the agents and/or with the sales particulars are intended for guidance purposes only; we cannot guarantee the accuracy and scale of any plans, and they do not form any part of the sales contract. Nothing in these particulars shall be deemed to be a statement that the property is in good condition or otherwise nor that any services or facilities are in good working order. Any movable contents, fixtures and fittings, (whether wired or not) referred to in these property particulars (including any shown in the photographs) are, unless the particulars say otherwise, excluded from the sale. In the event that the buyer proposes to purchase any movable contents or include them in any offer for the property, the buyer cannot in any respect imply any such inclusion from the property particulars. Any areas, measurements or distances referred to herein are approximate only and may be subject to amendment. It should not be assumed that the property has all necessary planning, building regulation or other consents and these matters must be verified by an intending purchaser. The information in these particulars is given without responsibility on the part of the agents or their clients and neither the agents nor their employees have any authority to make or give any representations or warranties whatever in relation to this property.

Flint & Cook Privacy Statement: We take your privacy very seriously. Your data will not be shared with any other parties without your express permission. Our Data protection Policy can be read in full on the Flint & Cook website, www.flintandcook.co.uk

Energy Efficiency Rating		Current	Potential
Very energy efficient - lower running costs			
(92+)	A		87
(81-91)	B		
(69-80)	C		
(55-68)	D		
(39-54)	E		
(21-38)	F	69	69
(1-20)	G		
Not energy efficient - higher running costs			
England, Scotland & Wales		EU Directive 2002/91/EC	