



**£90PPW £1,955.35 pcm**

- EXCELLENT LOCATION
- OPEN PLAN KITCHEN/LOUNGE
- FIVE BEDROOMS
- TWO BATHROOMS
- AVAILABLE 01.07.2021
- £90 PPPW





# Mayville Place

11 Mayville Place, Leeds, West Yorkshire, LS6 1NE

£90PPW £1,955.35 pcm

Diamond Properties are pleased to offer for rent, this five double bedroom mid terrace student property, which is situated in a popular and convenient residential location, with access to local amenities and commuter transport links. The accommodation is spread over three floors, briefly comprises; kitchen area, living/dining-room, five double bedrooms, two bathrooms and a yard to the front and back of the property. An early internal inspection is a must to fully appreciate the property. Viewing by appointment only

## Kitchen

2.87m x 2.03m (9' 5" x 6' 8")

## Living-room

4.65m x 4.06m (15' 3" x 13' 4") Living/Dinning-room

## Bedroom

4.40m x 2.90m (14' 5" x 9' 6") Double bedroom

## First Floor

### Bedroom

4.64m x 2.64m (15' 3" x 8' 8") Double bedroom

### Bedroom

3.66m x 3.25m (12' x 10' 8") Double bedroom

### Shower-room

3.65m x 1.06m (12' x 3' 6") Shower cubicle, w/c and basin

### Bathroom

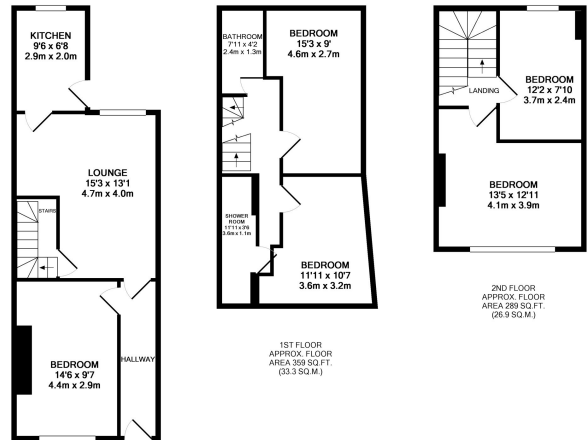
2.42m x 1.27m (7' 11" x 4' 2") Bath with overhead shower, w/c and basin

## Second Floor

### Bedroom

3.69m x 2.38m (12' 1" x 7' 10") Double bedroom

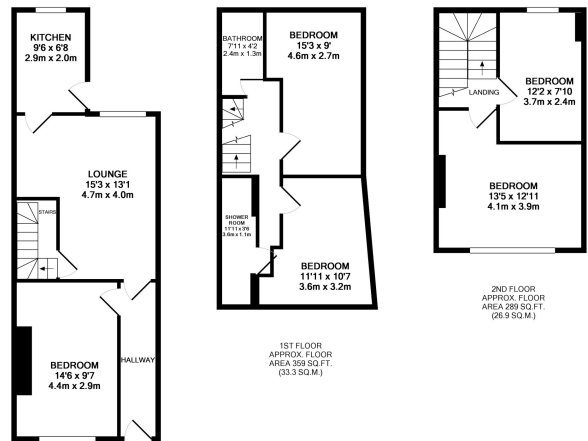
3.92m x 4.09m (12' 10" x 13' 5") Double bedroom



GROUND FLOOR APPROX. FLOOR AREA 444 SQ.FT. (41.2 SQ.M.)

TOTAL APPROX. FLOOR AREA 1092 SQ.FT. (101.4 SQ.M.)

Whilst every attempt has been made to ensure the accuracy of the floor plan contained here, measurements of doors, windows, rooms and any other items are approximate and no responsibility is taken for any error, omission, or misstatement. This plan is for illustrative purposes only and should be used as such by any prospective purchaser. The services, systems and appliances shown have not been tested and no guarantee as to their operability or efficiency can be given. Made with Metropix 02014



GROUND FLOOR APPROX. FLOOR AREA 444 SQ.FT. (41.2 SQ.M.)

TOTAL APPROX. FLOOR AREA 1092 SQ.FT. (101.4 SQ.M.)

Whilst every attempt has been made to ensure the accuracy of the floor plan contained here, measurements of doors, windows, rooms and any other items are approximate and no responsibility is taken for any error, omission, or misstatement. This plan is for illustrative purposes only and should be used as such by any prospective purchaser. The services, systems and appliances shown have not been tested and no guarantee as to their operability or efficiency can be given. Made with Metropix 02014