

# FOR SALE

---

Ashchurch Park Villas,  
Ravenscourt Park, W12

---

Terraced House  
Ravenscourt Park

---

£3,250,000 fh

---

4  2  2 



**horton  
andgarton**

SALES / LETTINGS / PROPERTY MANAGEMENT

hortonandgarton.co.uk | Sales 020 8819 0510 | Lettings 020 8819 0511  
172 King Street, Hammersmith, W6 0QU



# FOR SALE

---

Ashchurch Park Villas,  
Ravenscourt Park, W12

---

Terraced House  
Ravenscourt Park

---

£3,250,000 fh

---

4  2  2 



**horton  
andgarton**

SALES / LETTINGS / PROPERTY MANAGEMENT

hortonandgarton.co.uk | Sales 020 8819 0510 | Lettings 020 8819 0511  
172 King Street, Hammersmith, W6 0QU





# FOR SALE

Ashchurch Park Villas,  
Ravenscourt Park, W12

Terraced House  
Ravenscourt Park

£3,250,000 fh

4  2  2 

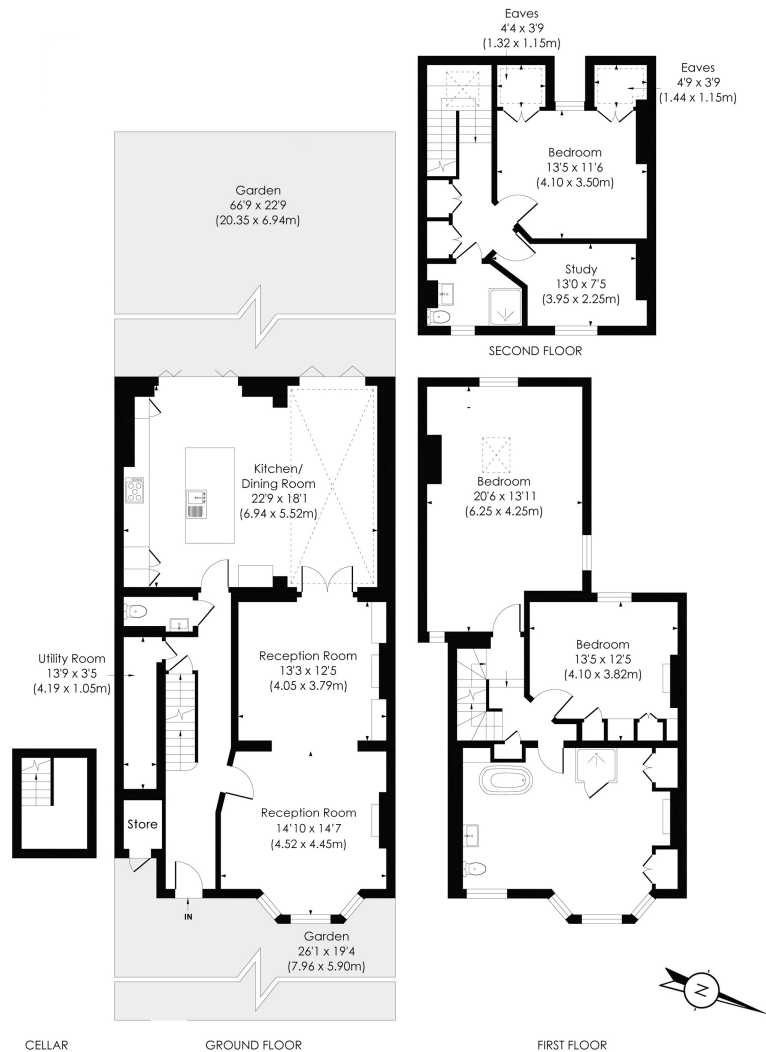


**horton  
andgarton**

SALES / LETTINGS / PROPERTY MANAGEMENT

hortonandgarton.co.uk | Sales 020 8819 0510 | Lettings 020 8819 0511  
172 King Street, Hammersmith, W6 0QU





**ASHCHURCH PARK VILLAS, W12**

Approx. Gross Internal Floor Area  
**2290 Sq' / 212.75 SqM** (Including Reduced Height Areas & Store)  
**2234 Sq' / 207.58 SqM** (Excluding Reduced Height Areas & Store)

Store: 17 Sq' / 1.54 SqM, Reduced Height: 39 Sq' / 3.63 SqM

© Pixangle Property Marketing Ltd. info@pixangle.com Tel: 0208 870 2118



This floor plan has been prepared for the purpose of illustration only in accordance with the latest RICS code of measuring practice and is not to scale. All measurements and areas are approximate and whilst every effort has been made to ensure the accuracy of the plan contained here, no responsibility is taken for any error, omission or misstatement.



Victorian family house | 66'9 West facing garden | 2234 Sq' - 207.58 SqM | EPC rating E | Four bedrooms - Two bathrooms | Ravenscourt Park



hortonandgarton.co.uk  
 Sales 020 8819 0510  
 Lettings 020 8819 0511

172 King Street, Hammersmith, W6 0QU