

FOR SALE

Hartswood Road,
Shepherd's Bush, W12

Semi-Detached House
Stamford Brook

£1,650,000 fh

3  2  1 

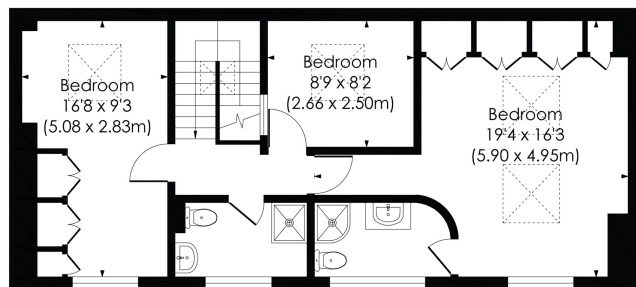


**horton
andgarton**

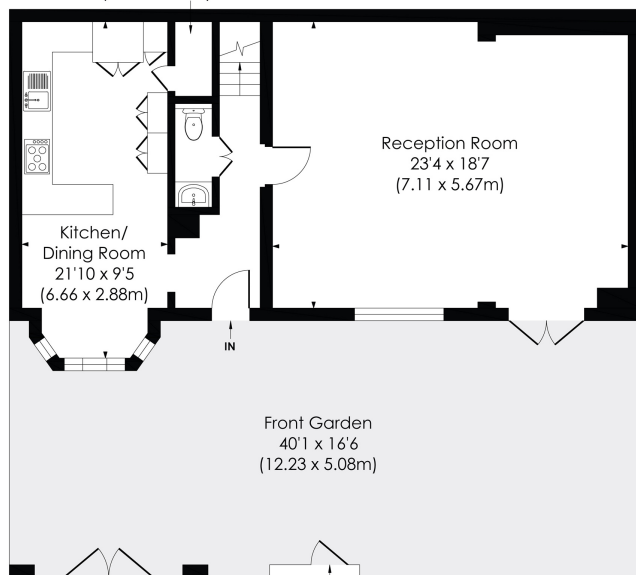
SALES / LETTINGS / PROPERTY MANAGEMENT

hortonandgarton.co.uk | Sales 020 8819 0510 | Lettings 020 8819 0511
172 King Street, Hammersmith, W6 0QU





FIRST FLOOR



GROUND FLOOR

HARTSWOOD ROAD, W12

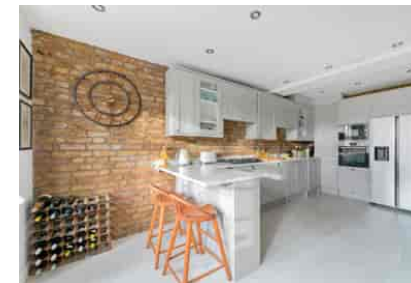
Approx. Gross Internal Floor Area

1391 Sq' / 129.21 SqM

**horton
andgarton**

© Pixangle Property Marketing Ltd. info@pixangle.com Tel: 0208 870 2118

This floor plan has been prepared for the purpose of illustration only in accordance with the latest RICS code of measuring practice and is not to scale. All measurements and areas are approximate and whilst every effort has been made to ensure the accuracy of the plan contained here, no responsibility is taken for any error, omission or misstatement.



Semi-detached house | Three bedrooms - two
bathrooms | 1391 Sq' - 129.19 SqM | Premier residential
road | EPC rating C | Stamford Brook



hortonandgarton.co.uk

Sales 020 8819 0510

Lettings 020 8819 0511

172 King Street, Hammersmith, W6 0QU