



Leamington Road,
Ainsdale, PR8 3JY

Offers Over £170,000

SM

STEPHANIE MACNAB
ESTATE AGENT

Nestled just a stone's throw away from the charming Ainsdale village, this THREE-BEDROOM SEMI-DETACHED house presents an exciting opportunity for those seeking a project in a popular location.

Awaiting your personal touch, this property offers ample potential for modernisation, with the price reflecting this enticing prospect.

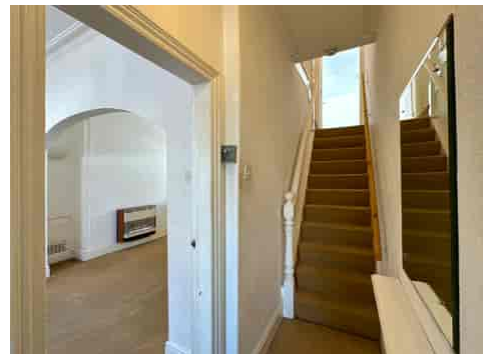
The layout, as showcased in the FLOORPLAN, encompasses an ENTRANCE HALL leading to a front-facing LOUNGE, DINING AREA, KITCHEN, and a convenient WET ROOM on the ground floor.

Upstairs, THREE BEDROOMS await, offering room for a growing family or those in search of extra space.

Outside, a petite front garden and OFF-ROAD PARKING provide practicality, while the REAR GARDEN basks in a desirable WEST-FACING aspect, ideal for soaking up the sun on bright days.

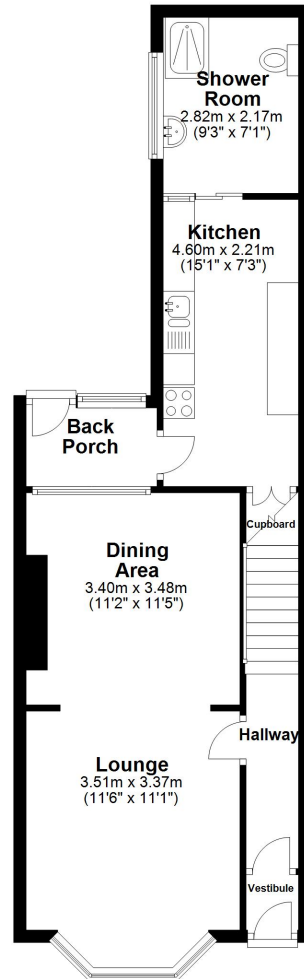
With the added benefit of NO ONWARD CHAIN, seize the opportunity to explore the possibilities of this property. Call now to arrange a viewing and embark on your journey to transform this house into your home. Contact us at 01704 516 626.





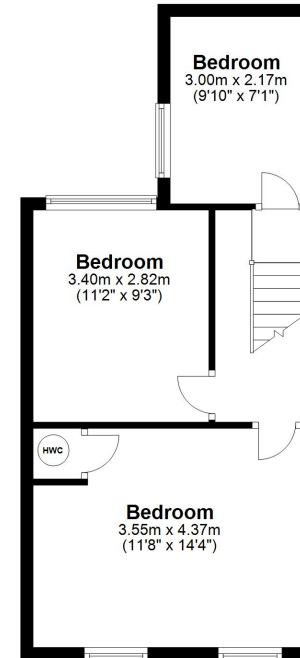
Ground Floor

Approx. 50.7 sq. metres (545.6 sq. feet)



First Floor

Approx. 38.2 sq. metres (411.0 sq. feet)



Total area: approx. 88.9 sq. metres (956.6 sq. feet)

Plan produced using PlanUp.

