



2 Eskdale Apartments, Queens Drive West, Ramsey, Isle of Man. IM8 2JD

Well presented ground floor apartment with private access, two double bedrooms, onsite parking space and potential for rental of a garage unit.



£185,000 Leasehold

PROPERTY DESCRIPTION

Positioned on Queens Drive West in Ramsey, 2 Eskdale Apartments offers a delightful living experience in a converted ground-floor apartment. With its private front and rear entrances, this two-bedroom abode provides a sense of exclusivity and independence. The heart of the home is the open-plan lounge, kitchen, and diner, thoughtfully designed to create a seamless flow of space, ideal for modern living and entertaining guests. The area is meticulously presented, exuding a blend of comfort and style.

The apartment boasts two double bedrooms, ensuring ample space for relaxation and rest. The master bedroom features the added convenience of an en-suite shower room, while a family bathroom fitted with a bath, sink, toilet, and heated towel rail caters to everyday needs. Access to the rear yard from the hall adds a touch of convenience and accessibility. Furthermore, the property offers an off-road tandem parking space onsite, along with the enticing prospect of a rental garage unit, making it an ideal choice for those seeking both comfort and practicality in their home.

INCLUSIONS Floor coverings, blinds, curtains and light fittings. There is an allocated tandem car park space.

TENURE Leasehold with active management company in place, charges approximately £103 per month.

FEATURES

- Beautifully Presented Ground Floor Apartment
- Private Front and Rear Entrance
- Modern Finish Throughout
- Close to Amenities, Beach and Ramsey Centre
- Open Plan Lounge, Kitchen, Diner
- Two Good Sized Double Bedrooms
- Family Bathroom plus En-Suite Shower Room
- Gas Central Heating Modern Boiler and uPVC Double Glazing
- Dedicated Off-Road Tandem Parking Space
- Potential to Rent a Garage Onsite
- Fibre Broadband Installed
- Management Fee of £103pcm

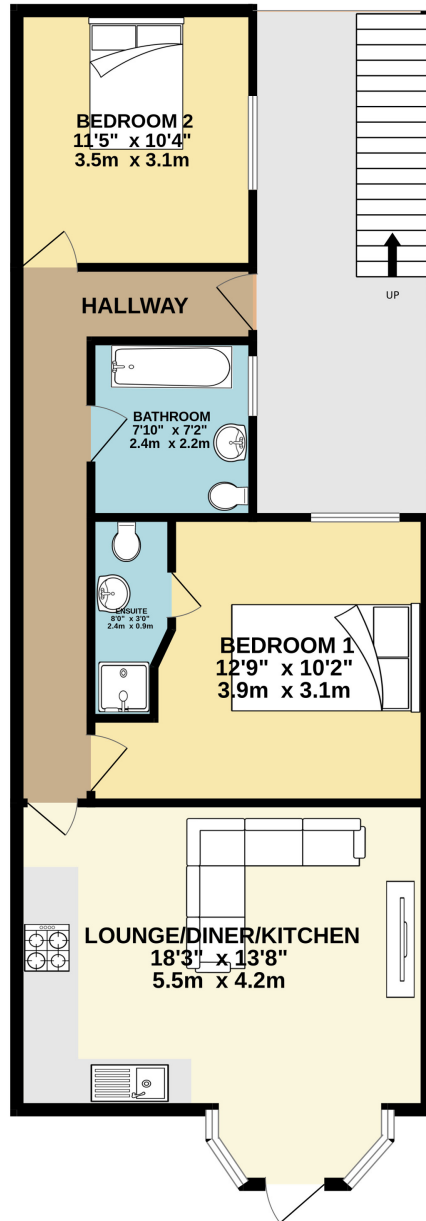


Property Images



FLOORPLAN

GROUND FLOOR



Whilst every attempt has been made to ensure the accuracy of the floorplan contained here, measurements of doors, windows, rooms and any other items are approximate and no responsibility is taken for any error, omission or mis-statement. This plan is for illustrative purposes only and should be used as such by any prospective purchaser. The services, systems and appliances shown have not been tested and no guarantee as to their operability or efficiency can be given.
Made with Metropix ©2024

DISCLAIMER: Whilst Manxmove Ltd believe that these details are correct, neither Manxmove Ltd or their clients guarantee their accuracy in any way. Consequently, these details are not to be used to form part of any legally binding contract. Prospective purchasers or tenants are advised to visit this property to satisfy themselves as to the correctness of these details. Please note, we use wide angle camera lenses in order to show as much of each room as possible. This is not intended to mislead any prospective purchasers or tenants in any way and an honest verbal description is always available prior to viewing if required.