

**2 Bedroom(s), Flat, Leasehold**

**Lindsey Close, Bessacarr, Doncaster.**



- 3D Virtual Tour Available
- First Floor Flat
- Kitchen
- Family Bathroom
- Local amenities, Schools and Transport Links
- No Chain
- Two Bedrooms
- Spacious Lounge
- Drive & Garage
- Rear Garden

**£130,000**  
**For Sale**

*Book your viewing today* Tel: 01302 247754

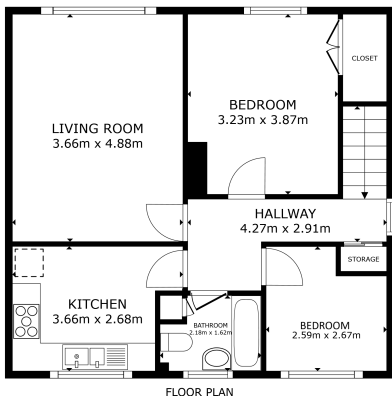


## Owner's View

A well-presented first-floor flat situated on the sought-after Lindsey Close in Bessacarr. This inviting home offers two comfortable bedrooms, a well-arranged kitchen and a spacious lounge ideal for relaxation or entertaining. The family bathroom is neatly finished and serves the property well. Externally, the flat benefits has a rear garden, providing welcoming outdoor areas for seating or leisure. A drive and garage offer convenient parking and storage options. Located within easy reach of local amenities, reputable schools and excellent transport links, this property is perfectly positioned for those seeking convenience and a pleasant residential setting.

## Internals

### Floor Plan



GROSS INTERNAL AREA  
FLOOR PLAN 86.5 SQ FT  
TOTAL - 83.6 SQ FT  
SIZES AND DIMENSIONS ARE APPROXIMATE, ACTUAL MAY VARY



### Kitchen



### Lounge





## Bedroom



## Bedroom



## Family Bathroom



## Entrance



## Property Information

Council Tax Band - A

Utilities - Mains Gas, Mains Electricity, Mains Water- Yes

Water Meter - Yes

Tenure -

Solar Panels - No

Space Heating System - Gas Boiler with radiators

Approximate Heating System Installation Date -

Water Heating System - Gas boiler (Combi)

Approximate Water Heating Installation Date -

Boiler Location - Cupboard in main bedroom

Approximate Electrical System Installation Date -

Permanent Loft Ladder - No

Loft Insulation - Yes

Loft Boarded out - No

Whilst every effort is made to ensure that the information contained in these particulars is reliable, they do not constitute or form part of an offer or any contract. The Property Hive accept no liability for the accuracy of the contents, and therefore they should be independently verified by prospective buyers or tenants before agreeing an offer. All measurements provided are approximate and should be verified before exchange of contracts. No appliances, fixtures or fittings have been tested and should be checked by the buyer before exchange of contracts to ensure they are in good working order.

## Energy Performance Certificate

