



131 Church Street, Langford, Biggleswade, Bedfordshire, SG18 9NX

£340,000

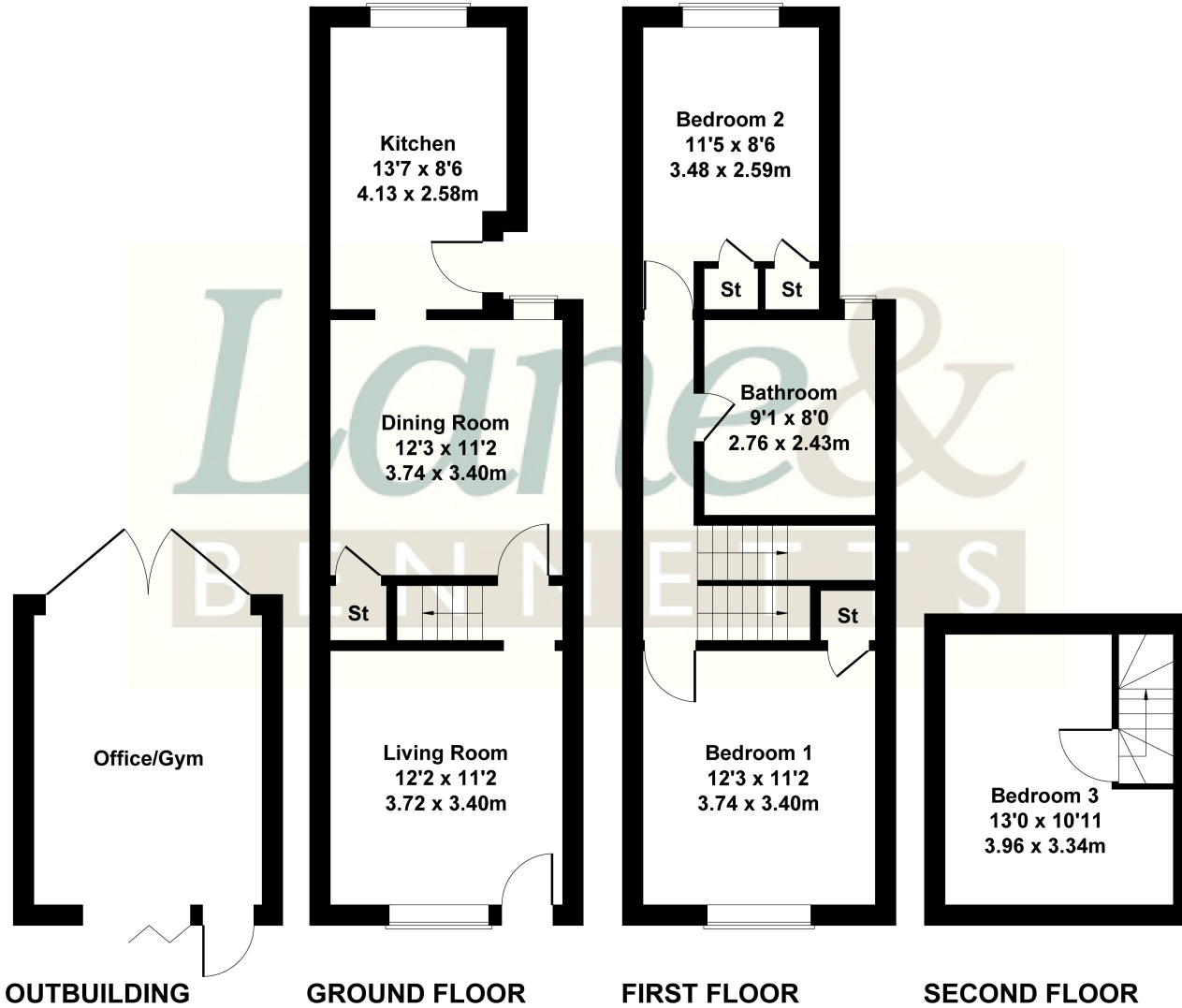
CHAIN FREE Attractive and fully refurbished three bedroom Victorian cottage situated in this elevated location close to the park. The cottage benefits from a double storey rear extension plus loft conversion providing good sized accommodation with a first floor luxury bath/shower room. Outside are gardens to front and rear with off road parking provided for two cars plus an Office/gym garage conversion. CALL TO VIEW.



131 Church Street

Approximate Gross Internal Area
1001 sq ft - 93 sq m
(Excluding Office/Gym)

- NO CHAIN
- EXTENDED VICTORIAN COTTAGE
- CLOSE TO PARK & FIELDS
- LOUNGE WITH FEATURE FIREPLACE
- DINING ROOM
- THREE BEDROOMS + FIRST FLOOR BATHROOM
- 60FT REAR GARDEN
- OFFICE/GYM(GARAGE CONVERSION)
- TWO OFF ROAD PARKING SPACES
- EASY ACCESS TO A1 & LOCAL TRAIN STATION



Not to Scale. Produced by The Plan Portal 2025
For Illustrative Purposes Only.

