



10 Rivermead Court, Ivel Close, Langford, Biggleswade, Bedfordshire, SG18 9RW

WE HAVE A KEY TO THE CHAIN FREE RIVERSIDE APARTMENT - COME AND VIEW  
 Superb two bedroom first floor apartment situated in this small courtyard riverside development. Well presented and improved by the current owner to include open plan living with a fully fitted kitchen with built in appliances, plus a lounge with a balcony that takes in the views of the River Ivel and open countryside beyond. Other benefits include gas central heating and outside are communal gardens adjoining the river and and allocated parking. NO CHAIN.

£245,000

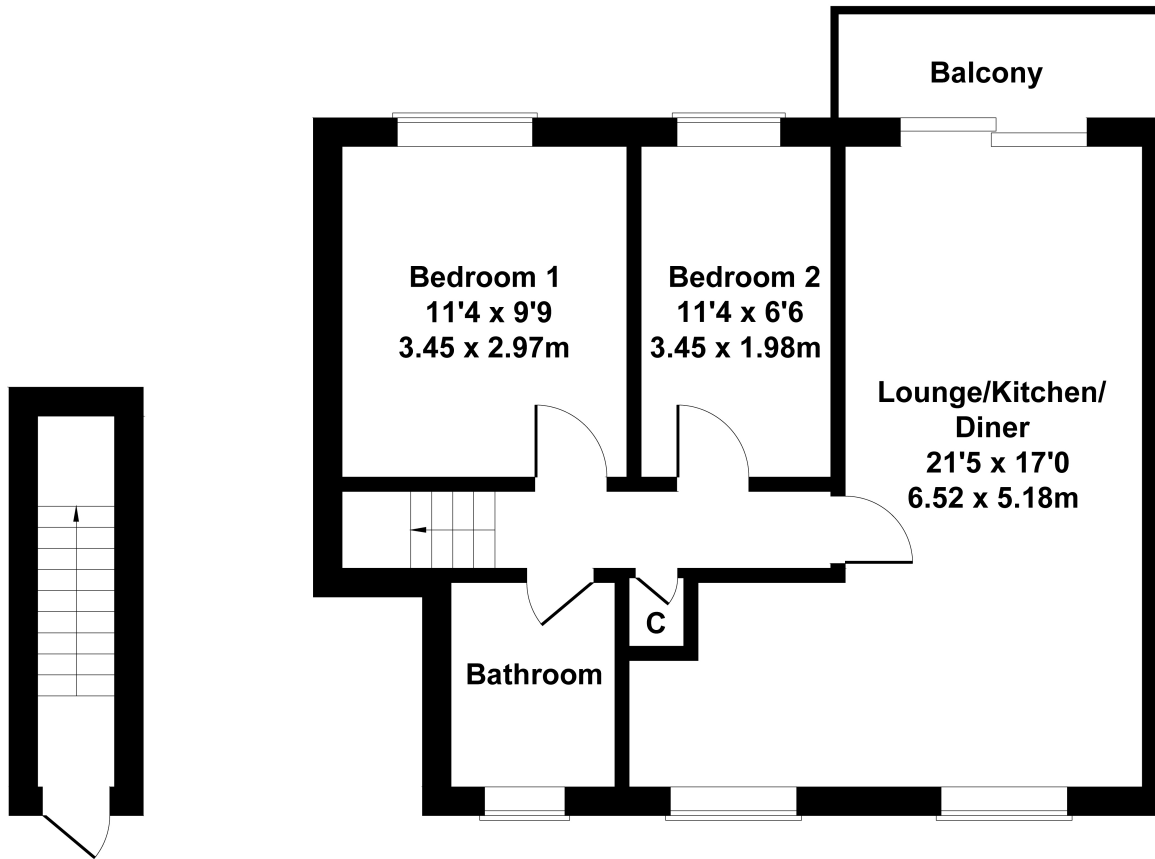




# 10 Rivermead Court

Approximate Gross Internal Area  
570 sq ft - 53 sq m

- SUPERB FIRST FLOOR TWO BEDROOM APARTMENT
- OVERLOOKING THE RIVER IVEL + OPEN COUNTRYSIDE
- OPEN PLAN LIVING WITH FITTED KITCHEN/DINER
- LOUNGE WITH BALCONY OFFERING AMAZING VIEWS
- PRIVATE ENTRANCE & HALLWAY
- COMMUNAL GARDENS
- ALLOCATED PARKING SPACE
- GAS CENTRAL HEATING
- NO CHAIN
- LONG LEASE 990 YEARS FROM 1984
- TAX BAND C / EPC BAND D



GROUND FLOOR

FIRST FLOOR

Not to Scale. Produced by The Plan Portal 2022  
For Illustrative Purposes Only.

