



Day & Co  
ESTATE AGENTS

28 Cavendish Street  
Keighley  
BD21 3RG



6 Larch Close, Oakworth,  
Keighley, West Yorkshire, BD22  
7JU

£210,000

T: 01535 664609

W: [www.dayandcoestateagents.co.uk](http://www.dayandcoestateagents.co.uk)

E: [keighley@dayandcoestateagents.co.uk](mailto:keighley@dayandcoestateagents.co.uk)



- SEMI-DETACHED HOUSE
- CUL-DE-SAC LOCATION
- VIEWING ADVISED

- THREE BEDROOMS
- WELL PRESENTED ACCOMMODATION
- EPC RATING D

## SUMMARY

\*\* SEMI-DETACHED HOUSE, THREE BEDROOMS, WELL PRESENTED ACCOMMODATION, MODERN KITCHEN, GROUND FLOOR BATHROOM, MAIN BEDROOM WITH EN-SUITE WASH ROOM, FRONT GARDEN, REAR PATIO, DRIVEWAY WITH GATES, DETACHED GARAGE, CUL-DE-SAC LOCATION, VIEWING ADVISED, EPC RATING D \*\*

## FULL DESCRIPTION

An internal viewing is advised to fully appreciate this well presented, three bedroom semi-detached house situated in a pleasant cul-de-sac location with excellent access to the ever popular primary school in Oakworth village. This property could appeal to a variety of buyers and we recommend any early viewing. In brief the accommodation comprises -

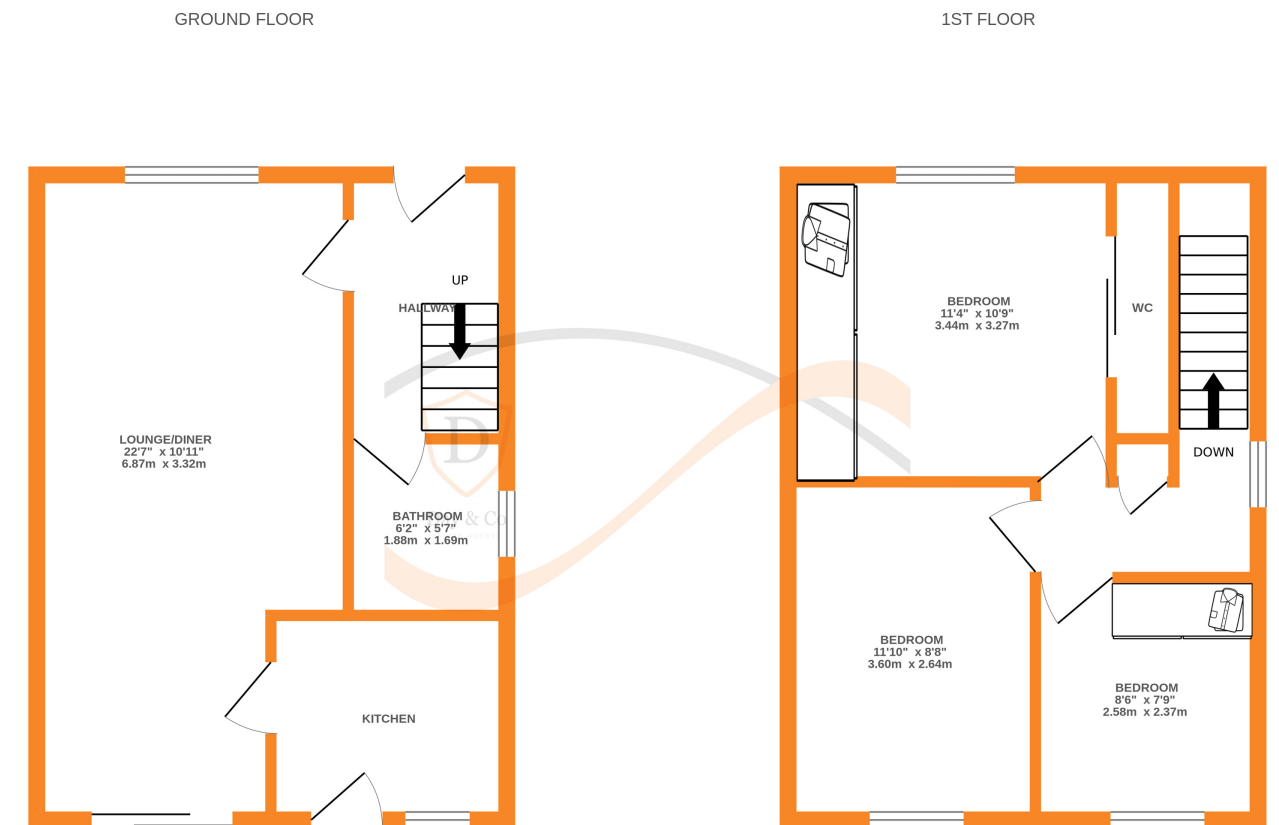
Ground Floor - Entrance hall, Bathroom which comprises of a rectangular bath with shower screen and shower, w.c., wash basin, towel radiator, window to the side. Spacious through Lounge/Diner with windows to the front elevation, patio doors to the rear, Kitchen having a modern range of fitted wall and base units, worktops, sink, integrated oven and convection microwave, gas hob, extractor hood, washing machine, rear door and window.

First Floor - Landing with built in cupboard and window to the side, Main Bedroom with built in wardrobes and en-suite Washroom, Double bedroom to the rear and good sized third bedroom with wardrobes and window to the rear.

Gas Central Heating & Double Glazing.

Outside - Front garden, driveway providing off road parking and having gates, detached garage, patio garden to the rear.

EPC Rating D



Whilst every attempt has been made to ensure the accuracy of the floorplan contained here, measurements of doors, windows, rooms and any other items are approximate and no responsibility is taken for any error, omission or mis-statement. This plan is for illustrative purposes only and should be used as such by any prospective purchaser. The services, systems and appliances shown have not been tested and no guarantee as to their operability or efficiency can be given.  
Made with Metropix ©2024