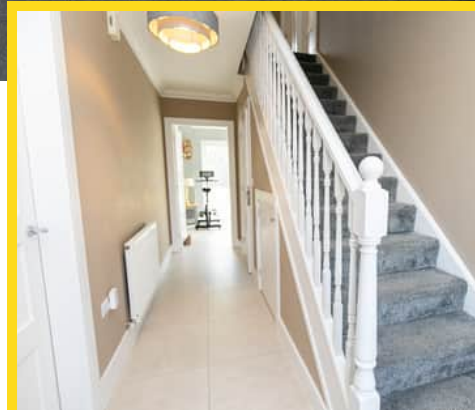




## 10 Royal Park, Ramsey, Isle of Man. IM8 3UF

10 Royal Park, Ramsey is a spacious detached 'Oxford' style home featuring four double bedrooms (including a master with en-suite), multiple reception rooms, an open-plan kitchen/dining/sitting area, utility room, integrated garage, and a generous rear garden with summerhouse and decking.



£499,950 Freehold

## PROPERTY DESCRIPTION

---

**ACCOMMODATION:** 10 Royal Park, Ramsey is a beautifully presented detached 'Oxford' style home offering generous and versatile living space throughout. The property features four double bedrooms, each with built-in wardrobes, while the spacious master bedroom boasts its own en-suite bathroom. At the front of the house is a private office and a bright, comfortable lounge – ideal for both working from home and relaxing.

To the rear, the home opens into an impressive open-plan kitchen, dining, and sitting room that is flooded with natural light and perfectly suited for family life or entertaining. Additional conveniences include a utility room and an integrated garage. Outside, the sizeable rear garden is ideal for outdoor living, with a summerhouse and raised decking area offering a tranquil retreat.

**INCLUSIONS:** Light fittings, floor coverings, blinds.

## FEATURES

---

- Detached Family Home
- 4 Double Bedrooms (1 En Suite)
- Spacious Lounge
- Impressive Kitchen and Dining Room
- Sunny Rear Facing Sitting Room
- Utility Room and Integral Garage
- Back Garden with Summerhouse and Decking
- Modern Construction 'Oxford' Style





## Property Images

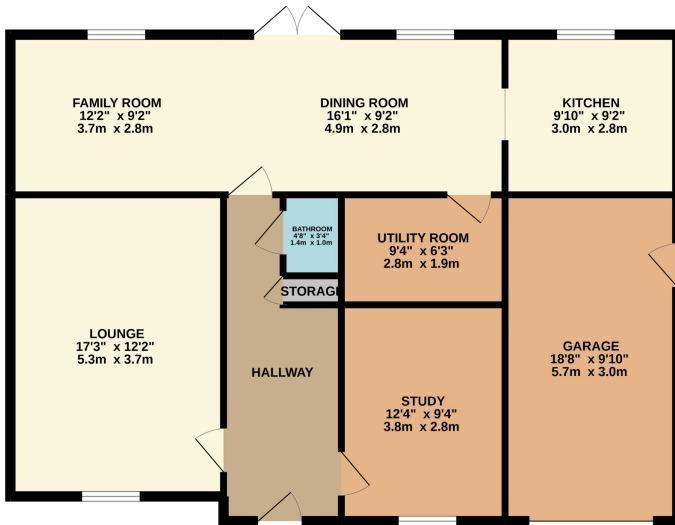
---



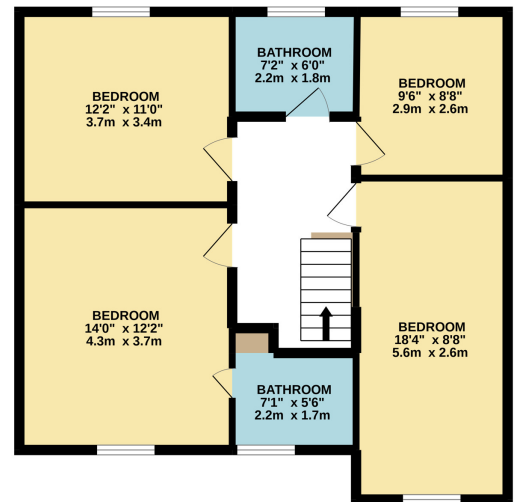
# FLOORPLAN



GROUND FLOOR  
1042 sq.ft. (96.8 sq.m.) approx.



1ST FLOOR  
642 sq.ft. (59.7 sq.m.) approx.



DETACHED 'OXFORD' STUNNING AND IMMACULATE DETACHED 4 BEDROOM FAMILY HOME

TOTAL FLOOR AREA : 1940sq.ft. (180.2 sq.m.) approx.

Whilst every attempt has been made to ensure the accuracy of the floorplan contained here, measurements of doors, windows, rooms and any other items are approximate and no responsibility is taken for any error, omission or mis-statement. This plan is for illustrative purposes only and should be used as such by any prospective purchaser. The services, systems and appliances shown have not been tested and no guarantee as to their operability or efficiency can be given.  
Made with Metropix ©2022



**DISCLAIMER:** Whilst Manxmove Ltd believe that these details are correct, neither Manxmove Ltd or their clients guarantee their accuracy in any way. Consequently, these details are not to be used to form part of any legally binding contract. Prospective purchasers or tenants are advised to visit this property to satisfy themselves as to the correctness of these details. Please note, we use wide angle camera lenses in order to show as much of each room as possible. This is not intended to mislead any prospective purchasers or tenants in any way and an honest verbal description is always available prior to viewing if required.