



Mortimer Court, Abbey Road, London, NW8

£550,000



Mortimer Court, Abbey Road, London, NW8

Recently refurbished to a high standard is this stylish and well presented one bedroom ground floor apartment located in a portered block offering direct access to well maintained communal gardens.

This fine flat boasts a stunning reception room with ample dining space and direct access to well maintained communal gardens, a modern and fully fitted kitchen, a principal bedroom with generous storage as well as a contemporary bathroom.

Mortimer Court is ideally located on The Abbey Road and just 0.3 miles from St John's Wood underground station (Jubilee Line) and just 0.4 miles from St John's Wood high street.

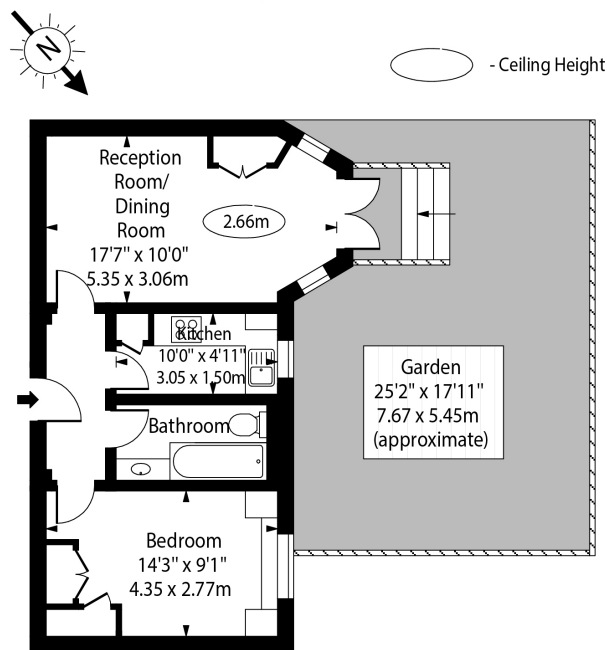
Features

- Recently Renovated
- One Bedroom
- Direct Access To Communal Garden
- Portered Block
- Stylish & Well Presented
- Bedroom With Generous Storage
- Contemporary Bathroom
- Ideally Located
- Heating Included Within Service Charge



Mortimer Court,
Abbey Road, London,
NW8

Mortimer Court,
Abbey Road, NW8



Ground Floor

Approx Gross Internal Area 467 Sq Ft - 43.38 Sq M

For Illustration Purposes Only - Not To Scale Floor Plan by www.nogaphotostudio.com Ref: No.51779

This floor plan should be used as a general outline for guidance only. Any intending purchaser or lessee should satisfy themselves by inspection, searches, enquiries and full survey as to the correctness of each statement. Any areas, measurements or distances quoted are approximate and should not be used to value a property or be the basis of any sale or let.