



Flat 11, 1 Maizey Road, Tadpole Garden Village, Swindon
Wiltshire

Waymark

Maizey Road, Swindon SN25 2RP

Wiltshire

Leasehold

Apartment With Views! | Two Double Bedrooms | Modern Open Plan Living Area | Two Bathrooms | Popular And Sought After Location | Over Looking A Green | Parking For Two Cars | Light And Airy Throughout

Description

An immaculate and stylish two double bedroom apartment which is situated in the popular and sought after Tadpole Garden Village. The property is light and spacious throughout and benefits from modern open plan living, two bathrooms, far reaching views and two allocated parking spaces.

This impressive apartment is larger than most at 788 sq ft and comprises of; Entrance hall with large built in storage cupboard, spacious open plan kitchen/diner/sitting room with built-in appliances and Juliet balcony, modern bathroom, two double bedrooms, master with Juliet balcony and en-suite shower room.

Outside the apartment benefits from two allocated parking spaces and the property over looks a green to the front.

The property is leasehold and is connected to mains gas,

electric, water and drainage. The lease is 125 years with 120 remaining, the ground rent and service charge is circa £112.13 per month

Location

Tadpole Garden Village is perfectly situated in-between Oakhurst and Blunsdon, offering great commuting links to the M4 and M5 via the A419. The village is renowned for its 'community spirit' with a local Sainsbury's, primary school (Tadpole Farm CE Primary) and secondary school (Great Western Academy), all circa 1 mile.

Viewing Information

By appointment only please.

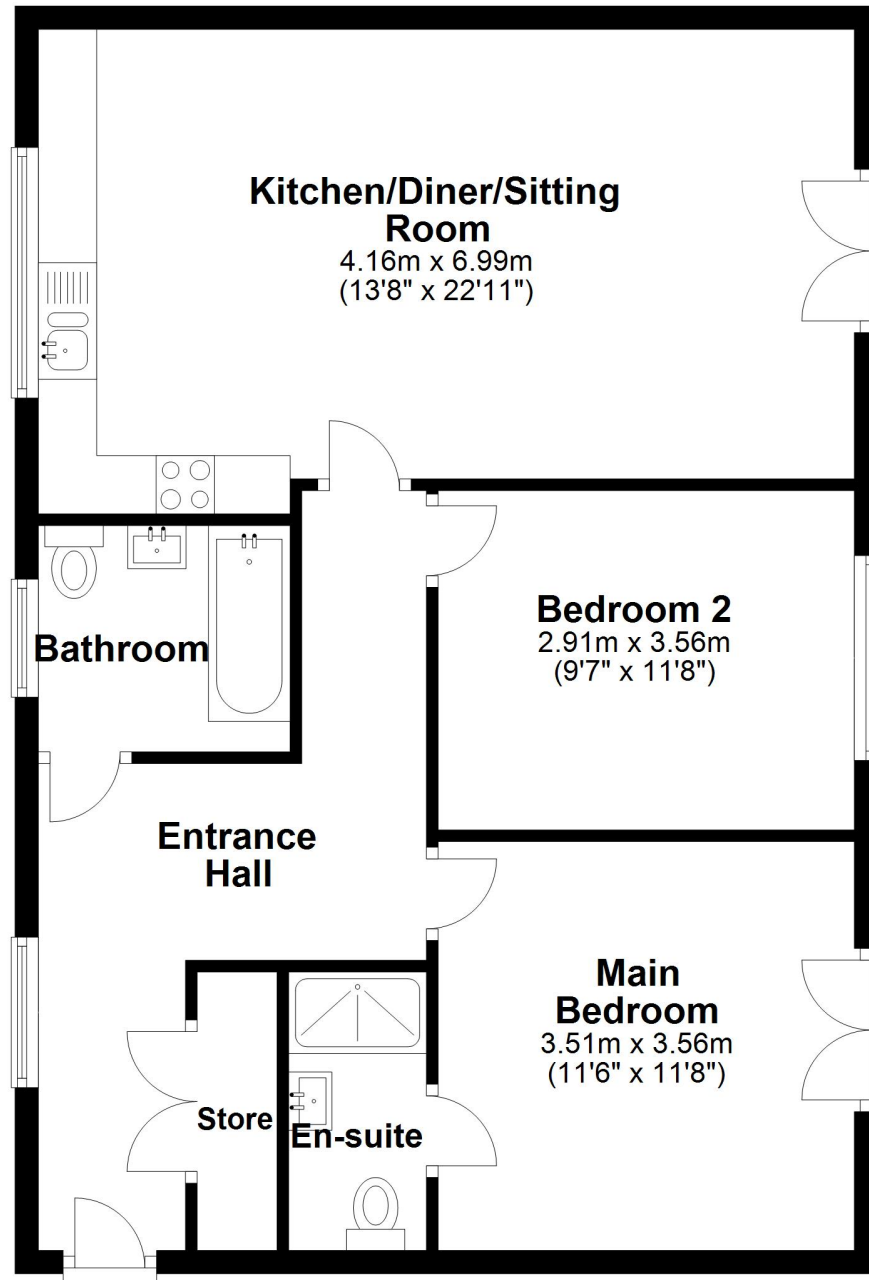
Local Authority

Swindon Borough District Council



Ground Floor

Approx. 73.2 sq. metres (787.8 sq. feet)



Total area: approx. 73.2 sq. metres (787.8 sq. feet)

Important Notice: These Particulars have been prepared for prospective purchasers for guidance only. They do not form part of an offer or contract. Whilst some descriptions are obviously subjective and information is given in good faith, they should not be relied upon as statements or representative of fact.

