





Heage Road, RIPLEY, Derbyshire DE5 3GH
£575,000 - Freehold



PROPERTY DESCRIPTION

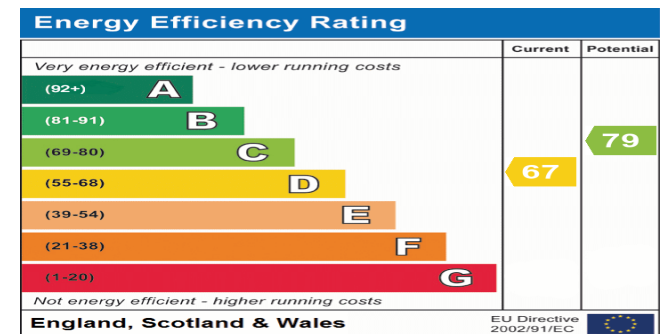
Derbyshire Properties is pleased to present this substantial detached residence for sale, which benefits from numerous extensions. Conveniently located between the towns of Ripley and Belper, the property sits on a sizable plot that offers ample parking, a family garden, and a large detached garage capable of accommodating four vehicles.

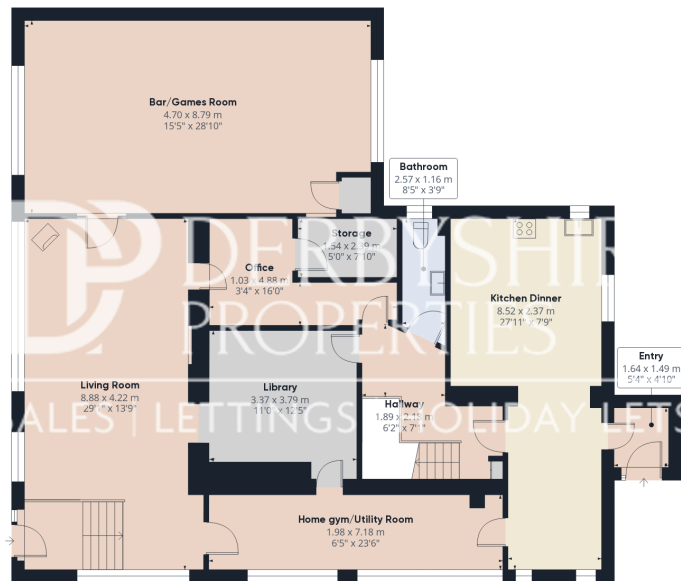
Internally, the spacious living accommodation includes a light and airy open-plan living room, a dining room/games room, a home gymnasium, a snug, a guest cloakroom, an inner lobby, a kitchen, a breakfast room, and an inner hallway. On the first floor, the spacious landing provides access to all five bedrooms, as well as the family bathroom, a separate WC, and two ensuite bathrooms.

We believe this property is ideally suited for large and extended families, and an internal inspection is truly essential to appreciate the accommodations on offer.

POINTS OF INTEREST

- 5 bedrooms & 3 En-Suites
- Bar & Games room
- Extended and Improved throughout
- Detached House with Large driveway and triple garage
- 4 Reception Rooms
- Open plan kitchen with integrated appliances & breakfast bar
- Sought after location

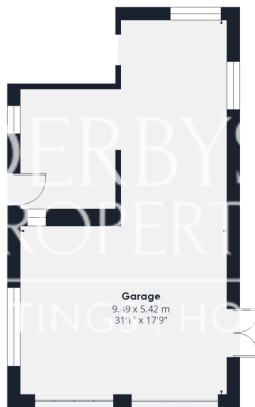




Ground Floor Building 1



Floor 1 Building 1



Ground Floor Building 2

Approximate total area⁽¹⁾

300.64 m²
3236.03 ft²

Reduced headroom

0.5 m²
5.36 ft²

(1) Excluding balconies and terraces

Reduced headroom

..... Below 1.5 m/5 ft

While every attempt has been made to ensure accuracy, all measurements are approximate, not to scale. This floor plan is for illustrative purposes only.

Calculations are based on RICS IPMS 3C standard.

GIRAFFE360