



4 Clements Close, Slough, Slough, Berkshire. SL1 1NJ.
£400,000

• ****NO ONWARD CHAIN****

• END OF TERRACE

• THREE BEDROOMS

• DECEPTIVELY SPACIOUS

• GARAGE

• CLOSE BY TO A NUMBER OF GOOD SCHOOLS

(INCLUDING ST BERNARDS AND LIPTON COURT

GRAMMAR)

• WITHIN WALKING DISTANCE OF LOCAL SHOPS AND AMENITIES

• SLOUGH MAINLINE TRAIN STATION

• FRONT AND REAR GARDENS

• IDEAL FAMILY HOME OR INVESTMENT OPPORTUNITY

188, High Street, Langley, Slough, Berkshire, SL3 8LF

01753 593888 - langleysales@flatmans.com

www.flatmans.com

4 Clements Close, Slough, Slough, Berkshire. SL1 1NJ.

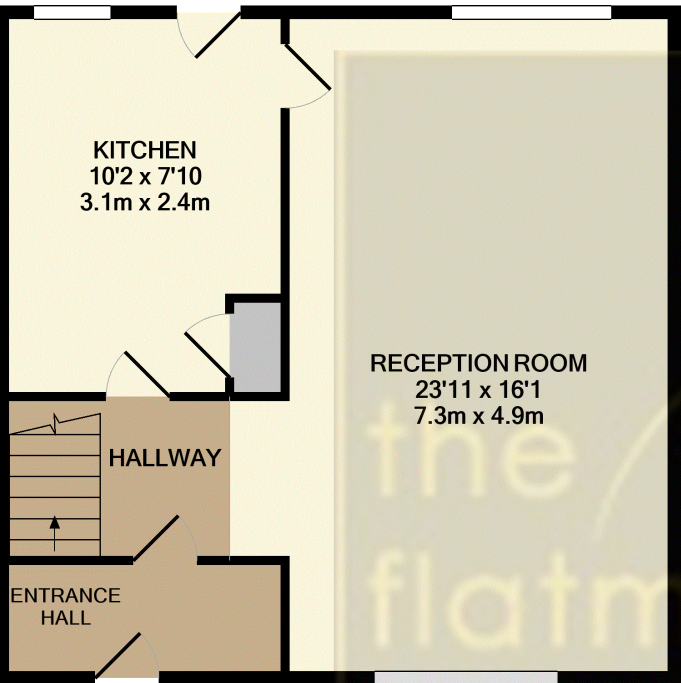
£400,000

NO ONWARD CHAIN

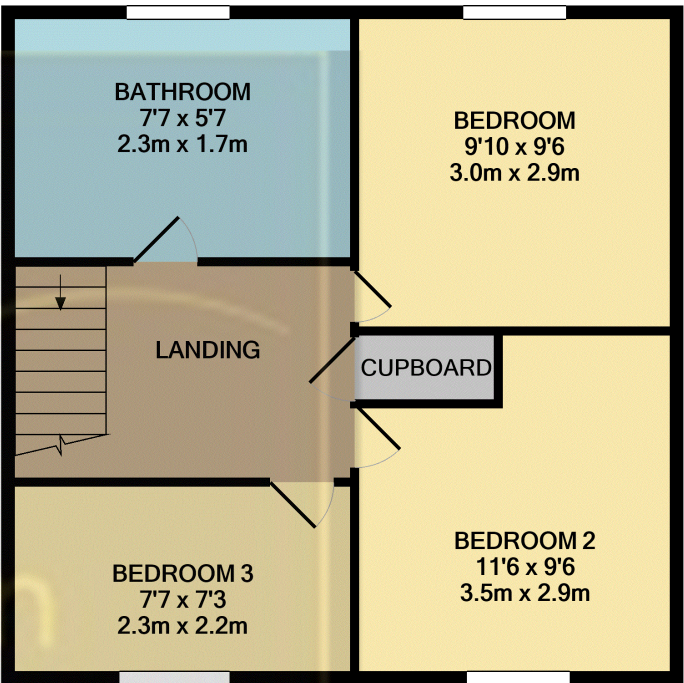
A superb opportunity to acquire this lovely and deceptively spacious three bed end of terrace. Ideally located within close proximity to numerous Ofsted rated schools including St Bernards and Upton Court Grammar. Located close to the heart of Slough Town centre and within a few minutes walk to Slough Mainline Train Station (Crossrail Station) and all other local amenities. This family home benefits from having an entrance hall, good sized lounge, kitchen, two double bedrooms, a further bedroom, family bathroom, garage and on-street parking, front and rear gardens.

IDEAL FAMILY HOME OR INVESTMENT OPPORTUNITY.

EARLY INSPECTION ADVISED.



GROUND FLOOR
APPROX. FLOOR
AREA 581 SQ.FT.
(54.0 SQ.M.)



1ST FLOOR
APPROX. FLOOR
AREA 578 SQ.FT.
(53.7 SQ.M.)

TOTAL APPROX. FLOOR AREA 1160 SQ.FT. (107.7 SQ.M.)

Whilst every attempt has been made to ensure the accuracy of the floor plan contained here, measurements of doors, windows, rooms and any other items are approximate and no responsibility is taken for any error, omission, or mis-statement. This plan is for illustrative purposes only and should be used as such by any prospective purchaser. The services, systems and appliances shown have not been tested and no guarantee as to their operability or efficiency can be given
Made with Metropix ©2021

