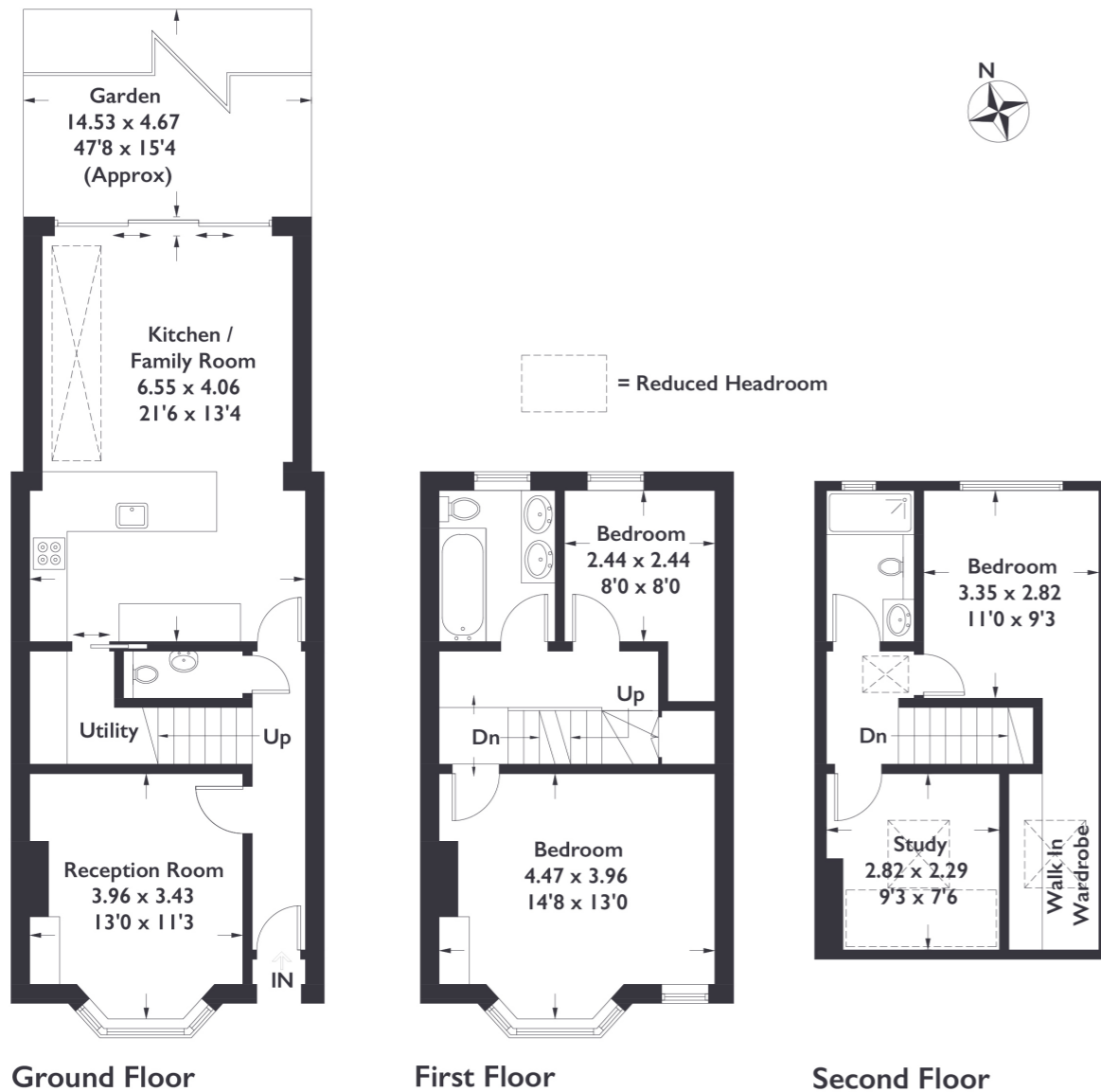


Altenburg Avenue, W13

Approximate Gross Internal Area = 122.6 sq m / 1320 sq ft
(Including Reduced Headroom)



3 BEDROOM HOUSE

Altenburg Avenue, W13
£975,000

Classically Edwardian in layout and retaining precious period detail, this three bedroom home has an outstanding ground floor extension that attractively frames the circa 50ft rear garden.

Lovingly and skillfully refurbished by the current owner, it's the perfect family home.

FEATURES

- Period Features
- Circa 50ft Rear Garden
- Close to Northfields Tube & West Ealing Crossrail
- Open Plan Living
- Fielding Primary School Catchment
- Utility
- Walk-in Wardrobe

Measured in accordance with RICS Code of Measuring Practice. To be used for identification and guidance purposes only. Whilst every care is taken in the preparation of this plan, please check all dimensions, shapes and compass bearings before making any decisions reliant upon them. www.london58.com © 2023 hello@london58.com



3 BEDROOM HOUSE

Altenburg Avenue, W13

Altenburg Avenue is one of Northfields premier roads.

With its tree-lined sidewalks, well-maintained gardens, and close proximity to parks, such as Walpole Park and Lammas Park, residents can enjoy the beauty of nature. Additionally, it benefits from excellent transport links, connecting residents to various amenities, including local shops, cafes, and restaurants. It is an ideal address for those seeking a tranquil yet well-connected place to call home in Ealing.

