



Old Ford End Road, Bedford, Bedfordshire MK40 4NQ

WALDENS ESTATE AGENTS



Old Ford End Road
Bedford
Bedfordshire
MK40 4NQ

£325,000

Three bedroom semi-detached property comes to the market for the very first time since being built. Being sold with no onward chain. Lounge/diner, kitchen, rear garden approximately 68 ft in length, driveway providing off road parking, garage.

- Three bedroom semi detached property
- No chain
- Entrance hall
- Lounge/diner
- Kitchen
- 3 Bedrooms
- Bathroom with separate toilet
- Enclosed rear garden approximately 68 ft in length
- Garage
- Driveway

- Council Tax Band C
- Energy Efficiency Rating



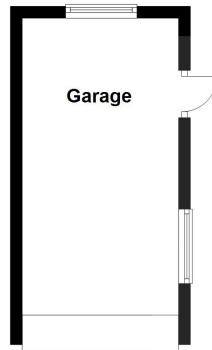
Close to local amenities



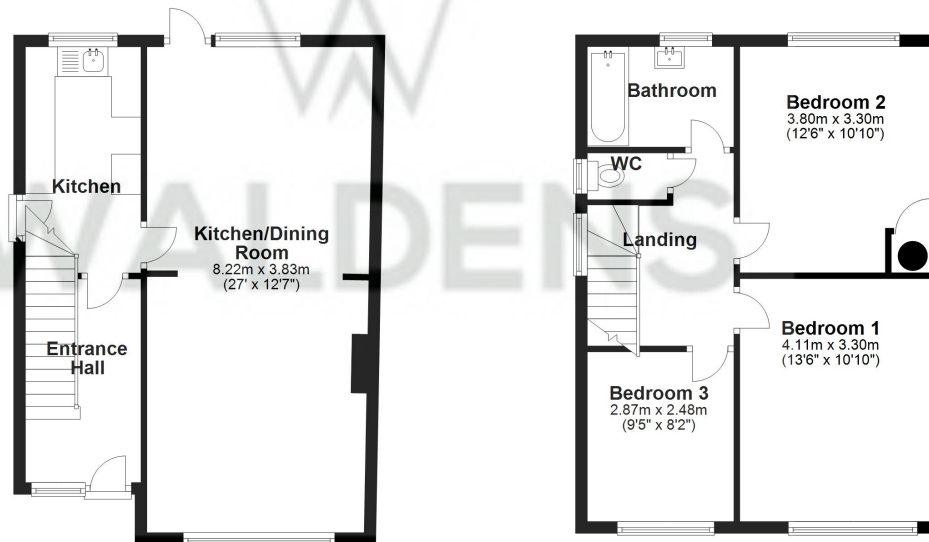
Entering the property into the entrance hall with stairs to first floor and doors to living areas. Lounge/diner which runs the full length of the property, fireplace, window to front and window and door to rear aspect. Kitchen with a range of fitted units, built in larder cupboard, space for cooker, plumbing for washing machine, wall mounted boiler, door to side aspect. On the first floor are the 3 Bedrooms. Bathroom with bath & wash hand basin, separate W.C. On the outside the rear garden is laid to lawn and enclosed by wooden fencing. Detached single garage with inspection pit. Front garden laid to lawn & driveway providing off road parking.



Ground Floor



First Floor



Total area: approx. 93.1 sq. metres (1001.8 sq. feet)

Whilst every attempt has been made to ensure the accuracy of the floor plan contained here, measurements of doors, windows, rooms and any other items are approximate and no responsibilities for any errors, omissions, or mis-statements is taken by the Author or Agents. This Plan is for illustration purposes only and should be used as such by any prospective purchaser
Plan produced using PlanUp.

01234 856684 | sales@waldens.co.uk | www.waldens.co.uk | 188-190 Bedford Road, Bedford, MK42 8BL

The information contained in the property details are designed to help you decide whether you would like to view the property and to avoid wasting your time in viewing unsuitable properties. We endeavour to ensure accurate information is detailed, but we are largely guided by information supplied to us by the seller. We are unable to check all aspects of the property as this would be prohibitive. Some of the photographs are taken using a wide- angled lens. Where a floor plan has been provided, this is for guidance purposes only.

