



14, Brocket Road

Welwyn Garden City,
Hertfordshire, AL8 7TY

Offers in Excess of £550,000

COUNTRY PROPERTIES
PART OF HUNTERS

COUNTRY PROPERTIES

Sunsets and dreams... This delightful 3 bedroom semi detached home on the Western outskirts of town overlooks rolling Hertfordshire countryside with wonderful sunsets.

- 3 bedroom semi detached home
- Sought after location on the West of the town
- Westerly frontage with wonderful sunset views.
- Garage and parking for several cars
- Previous planning for a ground floor extension
- Large garden with seating and entertainment area to rear

Ground Floor

Entrance Hall

Timber framed glazed UPVC light panel above leading through to entrance hall, Wood effect flooring, stairs to first floor, radiator, under stair storage cupboard and further under stair storage space with pull out shelving, doors to living room, dining room and kitchen.

Living Room

Walk in curved bay window to front with UPVC double glazed Georgian style windows and plantation shutters within, feature curved radiator, cast iron fireplace with white painted timber mantle and ceramic tiled hearth, built in TV cabinets, further built in storage cabinet with shelving over, picture rail.

Dining Room

Wood effect laminate flooring, UPVC double glazed sliding patio door to rear, feature cast iron fireplace with tiled decorative insert, ceramic tiled hearth, radiator concealed within a decorative radiator cover, shelving with storage cupboard below, picture rail.

Kitchen

Replacement UPVC double glazed door and window to rear, radiator, roll edge worktop with high gloss fronted white cupboards above and below with bar style brushed steel handles, stainless steel single bowl sink unit with mixer tap over, integrated electric oven with four burner gas hob above and extractor over, space for fridge/freezer, integrated dishwasher, space and plumbing for automatic washing machine, wall mounted gas boiler concealed within cupboard, ceramic wall tiling, ceramic floor tiling.

First Floor

Landing

Loft access with drop down hatch and ladder, airing cupboard with slatted shelving, within further over stair storage cupboard with shelving within, replacement UPVC double glazed window to side, doors to bedrooms and bathroom.



Bedroom One

Replacement UPVC double glazed window to rear, radiator, picture rail, range of built-in wardrobes with shelf and hanging space within and further overhead storage cupboards, built in dressing table area with draws and integrated mirror.

Bedroom Two

Replacement double glazed UPVC window to front, radiator, picture rail, integrated shelving, built in cupboard with shelf and hanging space and further overhead storage cupboard.

Bedroom Three

Replacement UPVC double glazed window to front, radiator, picture rail.

Bathroom

A white bathroom suite comprising of a panelled bath with Chrome effect mixer tap and shower attachment, wash hand basin inset within a vanity unit with numerous cupboards and draws below, low level dual flush WC with concealed system, Chrome effect heated towel rail, built in bathroom storage cupboards with glass fronted display units, integrated mirror with integrated lighting above, ceramic wall tiling, vinyl flooring, replacement UPVC double glazed window to rear with obscured glass.

Outside

Front Garden

Block pave driveway providing off road parking for two to three vehicles and accessing the garage/carport, further gravel driveway providing off-road parking for numerous cars, timber fence surround with various flowers and shrubs to borders, covered porch leading to the front of the house, outside power point

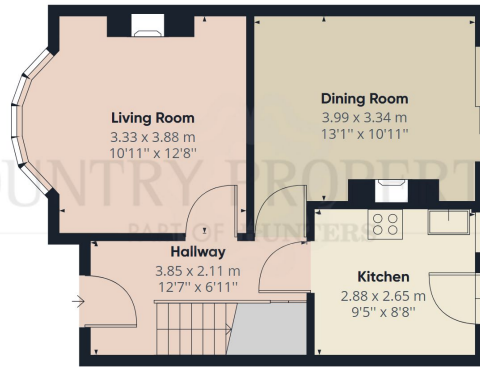
Rear Garden

An extensive garden which is on mainly laid to lawn with gated access to the rear of the garage/carport, various flowers and shrubs to borders. To the bottom of the garden there is an extensive gravelled entertainment area with seating area and access to a shed with outside covered porch ideal for barbecuing and entertaining, feature decorative arch separating the garden and the seating area, further timber shed and decking area.

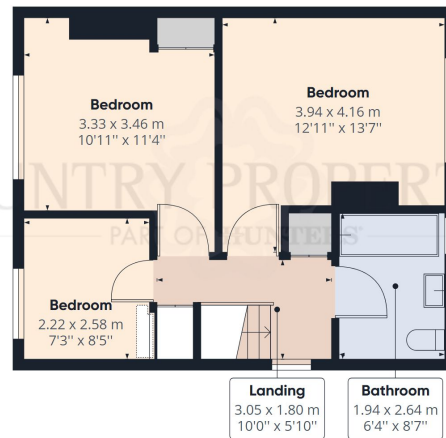
Garage/Carport

Timber carport with garage style doors to front and further gated access from the rear out to the rear garden, electric lighting within.





Ground Floor



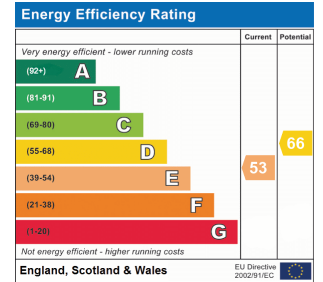
Floor 1

Approximate total area⁽¹⁾
83.88 m²
902.84 ft²

(1) Excluding balconies and terraces

While every attempt has been made to ensure accuracy, all measurements are approximate, not to scale. This floor plan is for illustrative purposes only.

GIRAFFE360



All measurements are approximate and quoted in metric with imperial equivalents and for general guidance only and whilst every attempt has been made to ensure accuracy, they must not be relied on. The fixtures, fittings and appliances referred to have not been tested and therefore no guarantee can be given and that they are in working order. Internal photographs are reproduced for general information and it must not be inferred that any item shown is included with the property. For a free valuation, contact the numbers listed on the brochure.

Viewing by appointment only

Country Properties | 3, Bridge Road | AL8 6UN

T: 01707 339146 | E: welwyngc@country-properties.co.uk

www.country-properties.co.uk