

A two-story brick house with a gravel garden and a paved driveway. The house has a red brick exterior, white window frames, and two green doors. The garden is filled with various potted plants, and the driveway is paved with red bricks. The sky is blue with some clouds.

Orpington Road

Royston,
Hertfordshire, SG8 9FW
Freehold - OIEO £375,000

country
properties

An exceptional turnkey home set in a highly sought-after location. Conveniently located within walking distance of the High Street and Train Station and just moments from Therfield Heath, this property demands early viewing. The rear garden offers a larger plot than typically found with two-bedroom homes on the development, complemented by attractive views towards Therfield Heath.

Agent's Notes

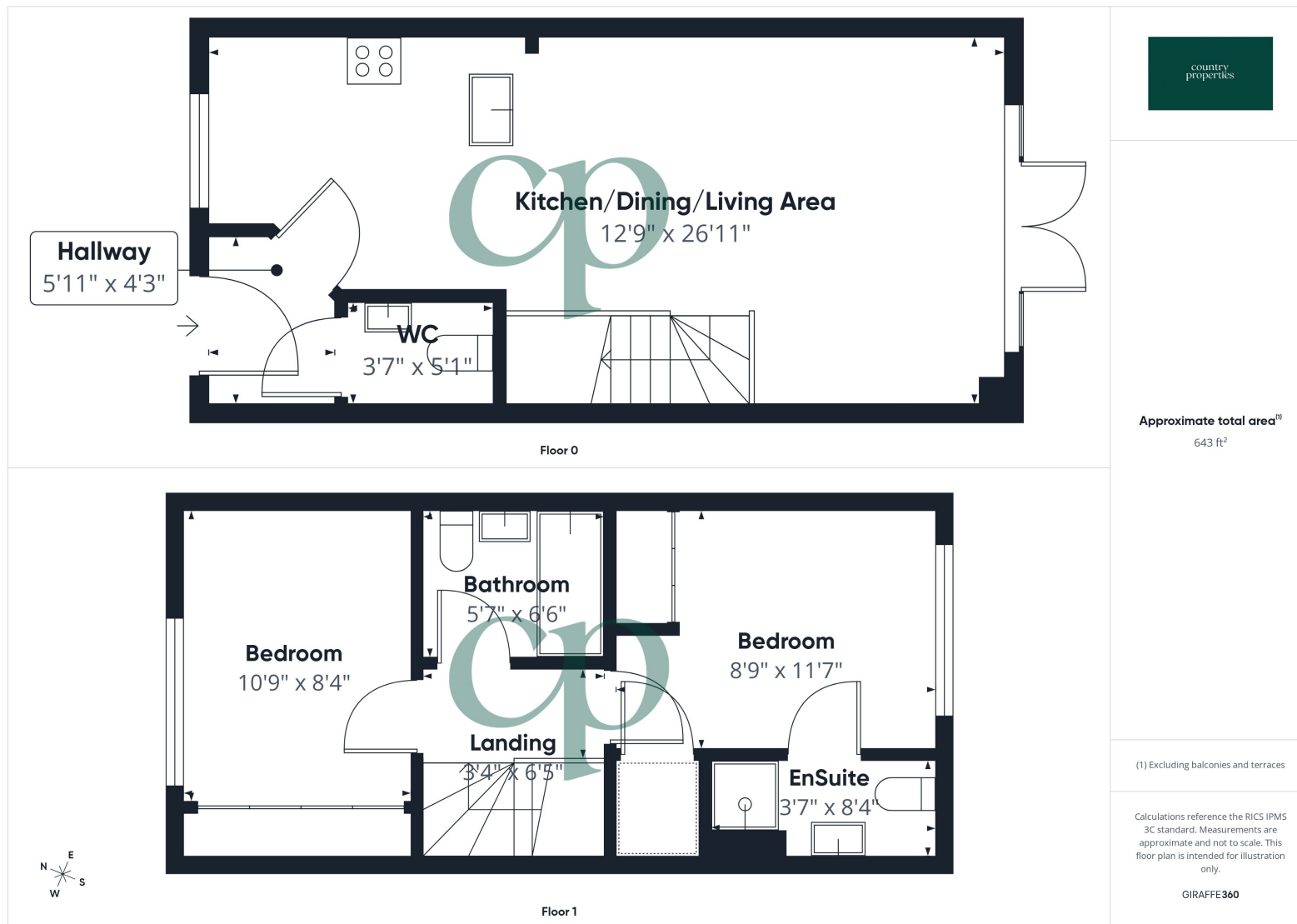
Service Charge - £210 PA

- › Sold out Redrow Development
- › Immaculately presented
- › South Facing Rear Garden
- › High Specification Throughout
- › Two Double Bedrooms
- › Principle Bedroom with EnSuite
- › Two private parking spaces
- › Views to front
- › EV Charger









All measurements are approximate and quoted in metric with imperial equivalents and for general guidance only and whilst every attempt has been made to ensure accuracy, they must not be relied on. The fixtures, fittings and appliances referred to have not been tested and therefore no guarantee can be given and that they are in working order. Internal photographs are reproduced for general information and it must not be inferred that any item shown is included with the property. For a free valuation, contact the numbers listed on the brochure

Viewing by appointment only

Country Properties | 45, High Street | SG8 9AW

T: 01763 245121 | E: royston@country-properties.co.uk

www.country-properties.co.uk

country
properties

country
properties