



- End Terrace Home
- Waterside Position
- Private Jetty With Boat Mooring
- Living Room With Balcony Overlooking River
- Dining Room
- Kitchen
- Two Double Bedrooms
- Inner Hall/ Study
- No Onward Chain
- Gas Central Heating

Ferry House, The Quay, Wivenhoe, Colchester, Essex. CO7 9BT.

A charming end terraced cottage in this idyllic position on the Quay in Lower Wivenhoe. Built in 1837 believed to have formally been the Ferryman's House, having been remodelled inside by pioneering Architect Bryan Thomas RIBA who lived at Ferry House for the last 22 years. This character-filled home sits proudly with stunning river views and putting it within easy reach of good local amenities to include the mainline train station with fast links to London Liverpool Street in just over an hour. Highlights of the home include two double first floor bedrooms with river views, inner hall/study, family bathroom, on the ground floor there are two spacious and bright rooms with fireplaces, sash windows and river views, kitchen and side lobby, front river jetty with space for mooring. Offered with no onward chain.



Property Details.

Ground Floor

Lobby

9' 03" x 2' 09" (2.82m x 0.84m) Wooden front door, tiled floor, window to side and rear.

Living Room



14' 06" x 12' 11" (4.42m x 3.94m) Balcony doors to front, fireplace with brick hearth, stairs to first floor.

Dinning



11' 01" x 10' 0" (3.38m x 3.05m) Double glazed window to side, understairs storage, fire place surround, built in alcove units.

Kitchen



11' 2" x 5' 2" (3.40m x 1.57m) Window to side, inset spot lights, tiled floor, wall mounted boiler, fitted kitchen including shaker style units, oak worktop, ceramic sink, Siemens oven, warming draw, induction hob, space for washing machine dish washer and fridge/freezer.

First Floor

Landing

8' 11" x 5' 1" (2.72m x 1.55m) Velux window, ceiling beams, doors leading to:

Bedroom



12' 10" x 12' 4" (3.91m x 3.76m) Double glazed window to front, radiator, fireplace, views onto the estuary.

Property Details.

Bedroom



15' 08" x 8' 08" (4.78m x 2.64m) Double glazed windows to side, radiator, fitted wardrobe, loft access x2.

Inner Lobby/Study



11' 03" x 2' 11" (3.43m x 0.89m) Turning to 7' 08" x 5' 4" (2.34m x 1.63m) Window to rear and side, stairs to mezzanine area.

Family Bathroom



Velux window, shower enclosure with tiled walls, low level WC, wash hand basin.

Outside

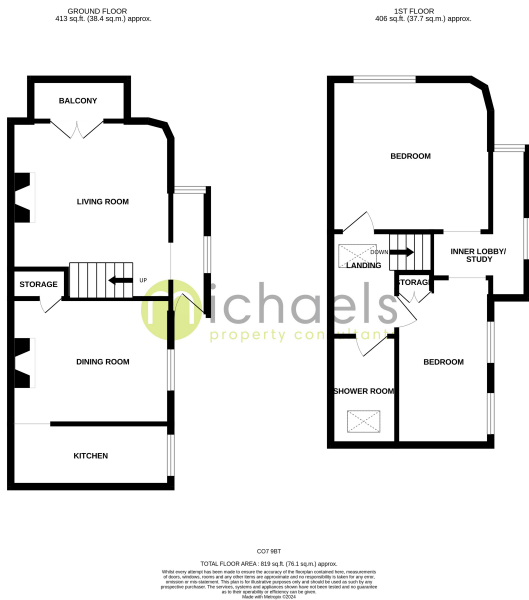
Balcony Terrace & Private Jetty



You will find a balcony terraced as you step out from the living room, offering stunning views retained by railings along with a side flower bed. A private jetty with boat mooring and space for table and chairs ideal for watching the sunset.

Property Details.

Floorplans



Location



Energy Ratings

We have not carried out a structural survey and the services, appliances and specific fittings have not been tested. All photographs, measurements, floor plans and distances referred to are given as a guide only and should not be relied upon for the purchase of carpets or any other fixtures or fittings. Gardens, roof terraces, balconies and communal gardens as well as tenure and lease details cannot have their accuracy guaranteed for intending purchasers. Lease details, service ground rent (where applicable) are given as a guide only and should be checked and confirmed by your solicitor prior to exchange of contracts.