



Day & Co
ESTATE AGENTS

28 Cavendish Street
Keighley
BD21 3RG



44 North Street, Haworth,
Keighley, West Yorkshire, BD22
8EP

£175,000

T: 01535 664609

W: www.dayandcoestateagents.co.uk

E: keighley@dayandcoestateagents.co.uk

- TERRACE HOUSE
- LIVING ROOM & KITCHEN DINER
- VIEWING ADVISED

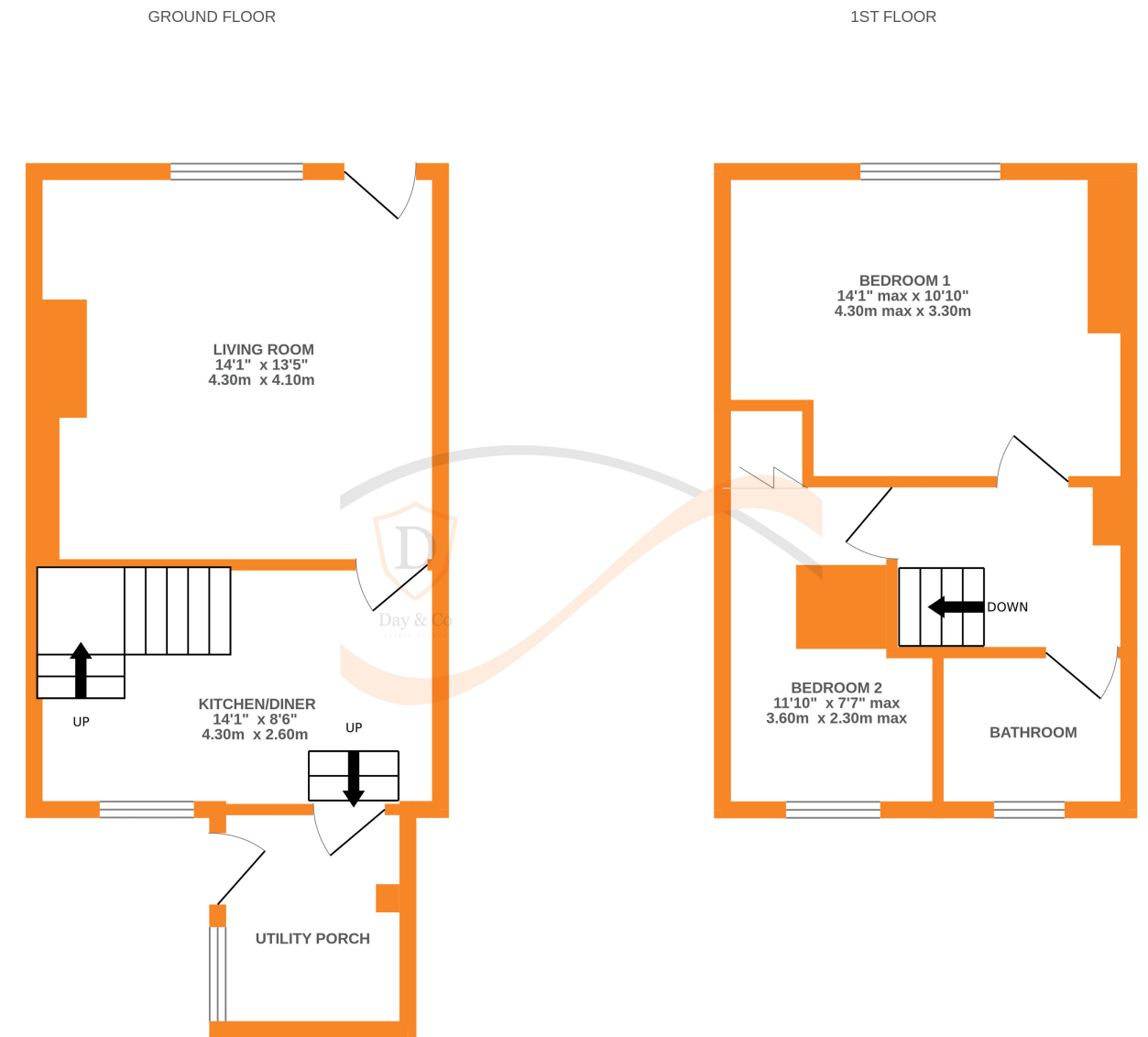
- TWO BEDROOMS
- POPULAR VILLAGE OF HAWORTH
- EPC Rating C

SUMMARY

** DELIGHTFUL THROUGH TERRACE, TWO BEDROOMS, LIVING ROOM & DINING KITCHEN, UTILITY PORCH, MODERN BATHROOM, GAS CENTRAL HEATING, DOUBLE GLAZING, POPULAR VILLAGE OF HAWORTH, INTERNAL VIEWING ADVISED, EPC RATING C **

FULL DESCRIPTION

Of interest to a variety of buyers is this delightful, well presented two bedroom terrace house situated in the sought after historic village location of Haworth with excellent access to the famous cobbled Main Street. The accommodation comprises of a spacious living room with windows to the front, gas fire. Dining Kitchen with a range of fitted wall and base units, worktops, sink, electric oven, gas hob, integrated dishwasher, window to the rear. Utility Porch with plumbing for washing machine, space for fridge freezer, window and stable rear door. First Floor - Landing. The Main Bedroom can be found at the front, Bedroom Two can be found at the rear with built in storage and completing the accommodation is the house bathroom which has a modern suite comprising of a bath with shower over and screen, vanity wash basin, w.c., window to the rear. Outside small paved area's to the front and rear. Internal viewing advised. EPC Rating C.



Whilst every attempt has been made to ensure the accuracy of the floorplan contained here, measurements of doors, windows, rooms and any other items are approximate and no responsibility is taken for any error, omission or mis-statement. This plan is for illustrative purposes only and should be used as such by any prospective purchaser. The services, systems and appliances shown have not been tested and no guarantee as to their operability or efficiency can be given.
Made with Metropix 62024