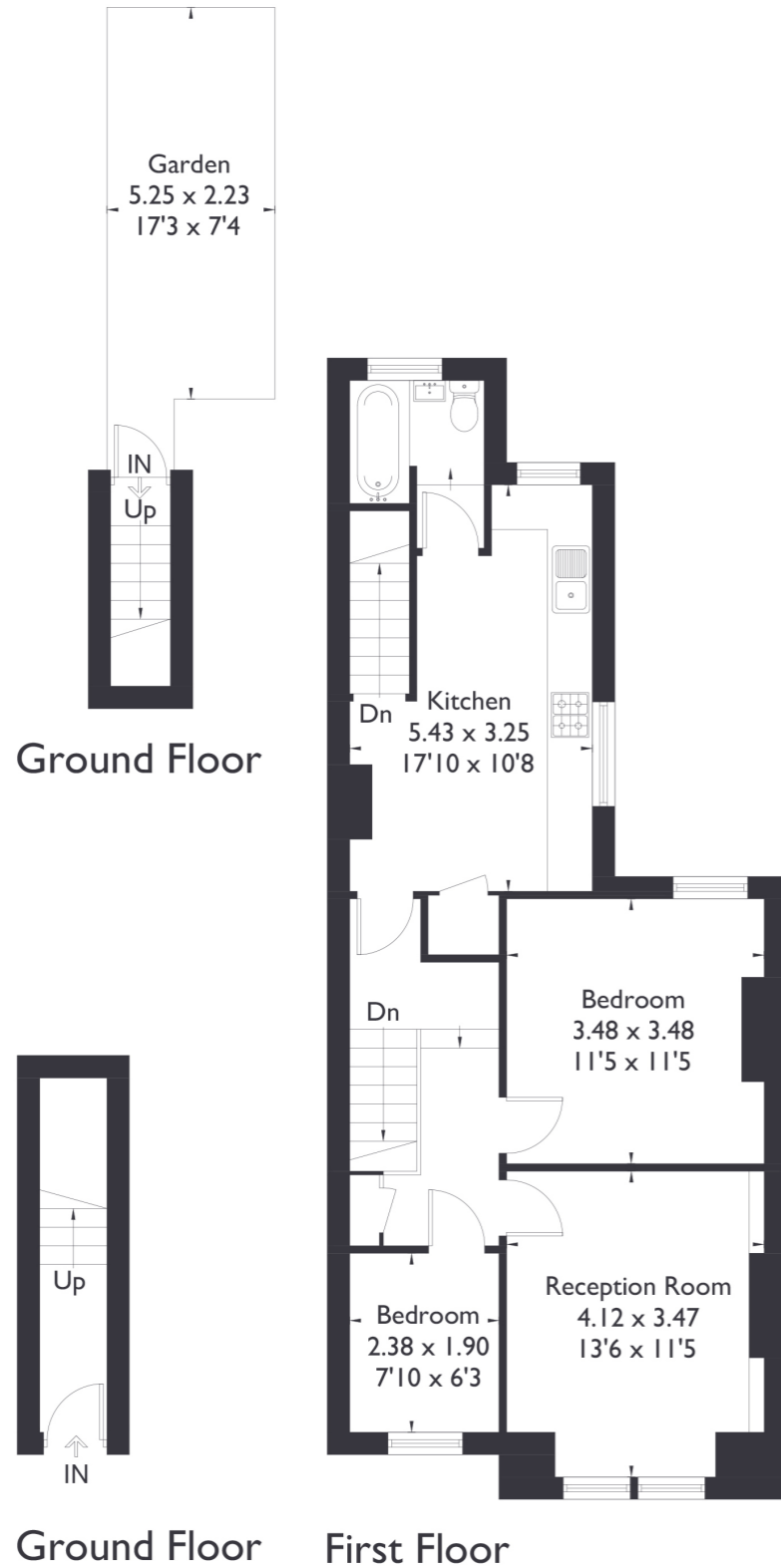


**Oaklands Road, W7**

Approximate Floor Area = 68.0 sq m / 732 sq ft



**2 BEDROOM FLAT**

**Oaklands Road, W7**  
**£485,000**

Welcome to this beautifully presented first floor flat, offering two bedrooms and one modern bathroom. The flat features a separate reception room and an inviting open-plan kitchen dining area, perfect for entertaining.

Lovingly and skilfully refurbished by the current owners to be a wonderful family home.

**FEATURES**

- Two Bedrooms
- One Bathroom
- Open Plan Kitchen/Dining
- Separate Reception Room
- Hanwell Station/West Ealing Station (Elizabeth Line)
- Oaklands Primary School/ Elthorne High School
- EPC Rating C



2 BEDROOM FLAT

Oaklands Road, W7

£485,000

Bathed in natural light throughout, the property boasts ample storage.

Additionally, enjoy the tranquility of a garden. Conveniently located near Hanwell Station and within easy reach of West Ealing Station and West Ealing amenities, this flat is also situated in the catchment area for Oaklands Primary School and Elthorne Park High School. EPC Rating C.

