



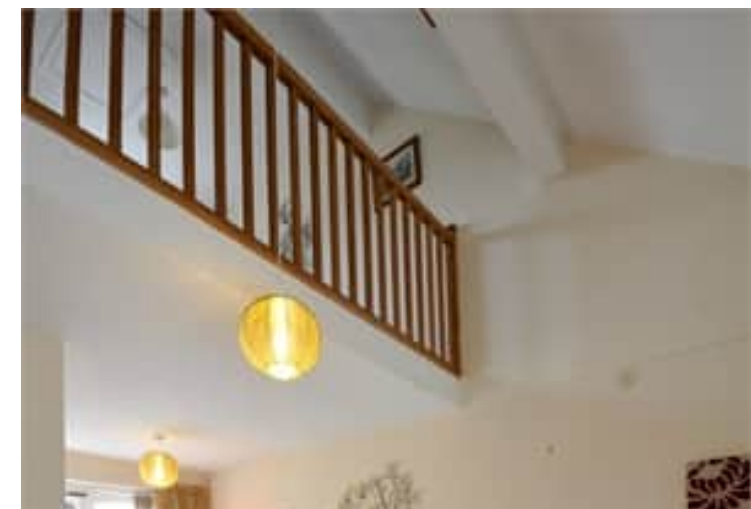


NEW INSTRUCTION

- Semi-Detached House
- Open Plan Lounge & Dining Areas
- Fitted Kitchen
- Mezzanine Bedroom
- Full Bathroom
- Rear Garden
- One Parking Space

Description

A one bedroom semi-detached house, occupying a small cul-de-sac position on the popular Firdale Park area of Northwich. The property benefits from gas central heating and comprises: Entrance porch with built-in cupboard, open plan living room with lounge and dining areas and fitted kitchen on the ground floor along with a first floor mezzanine bedroom and bathroom. Outside there is an enclosed rear garden and there is an private parking space. Unfurnished and immediately available, restrictions apply. An internal viewing is highly recommended.



Location
Tenure

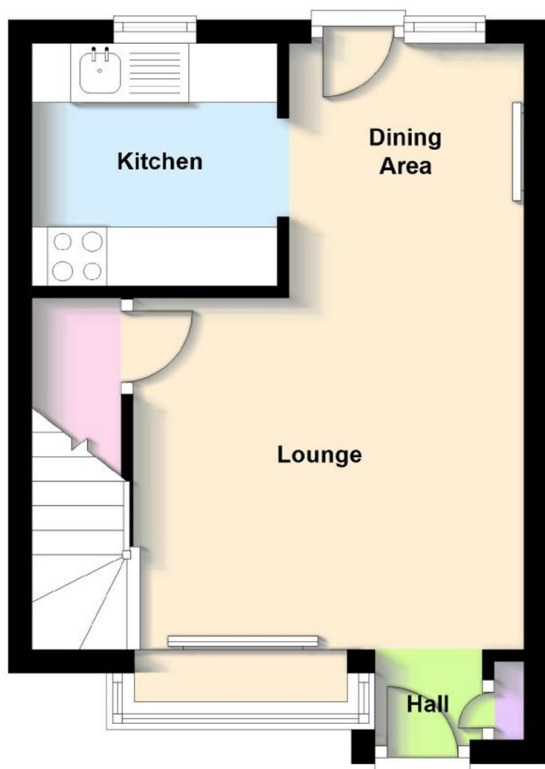
EPC Rating:

Important Notes
Type Here



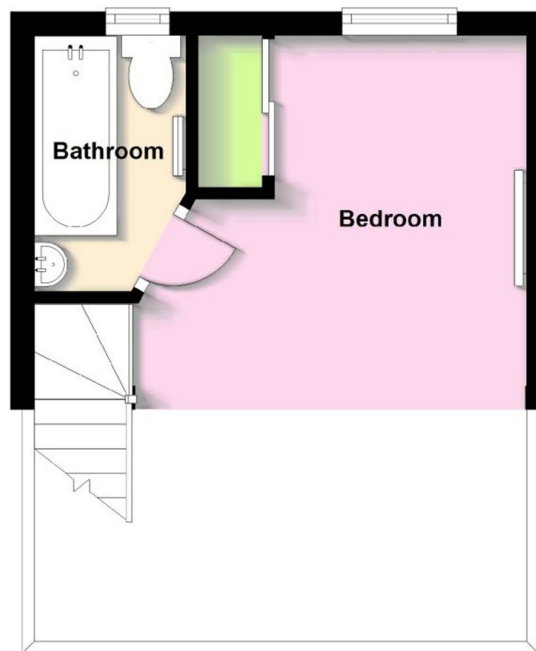
Ground Floor

Approx. 23.0 sq. metres (247.7 sq. feet)



First Floor

Approx. 12.3 sq. metres (132.4 sq. feet)



Total area: approx. 35.3 sq. metres (380.0 sq. feet)