

PAUL ALEXANDER  
MORTGAGE CONSULTANTS

For all insurance and mortgage needs,  
please call Paul Alexander Mortgage Consultants  
on 020 8997 3915

LONDON'S LOCAL AGENT  
enquiries@orchardsoflondon.com  
020 3962 6000 | orchardsoflondon.com  
Westworld West Gate London W5 1DT

## LYNTON TERRACE

£1,350 pcm

- One double bedroom
- Spacious reception
- Modern separate kitchen
- Stylish bathroom
- Excellent condition
- Private garage
- Communal gardens
- Close to transport links
- Local amenities nearby

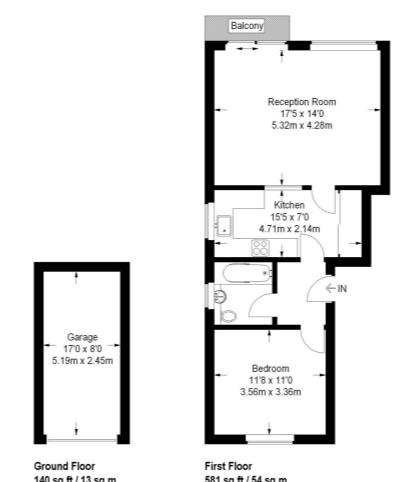
LONDON'S LOCAL AGENT  
enquiries@orchardsoflondon.com  
020 3962 6000 | orchardsoflondon.com  
Westworld West Gate London W5 1DT



Orchards of London are delighted to offer to the market this one bedroom apartment, presented in excellent condition and boasting spacious accommodation and private garage, located within easy reach of excellent transport links and local amenities. The property comprises a bright and spacious reception room with space for dining and sliding doors opening onto a delightful balcony, there is a modern separate kitchen, a stylish bathroom and a well proportioned double bedroom. Walter Court is in a popular Acton location within a short a walk of Acton Mainline Station (National Rail) and West Acton Station (Central Line). Local amenities are easily accessible on Horn Lane and Uxbridge Road, and motorists will benefit from convenient access to the A40/M4.

Walter Court

Approximate Gross Internal Area  
 581 sq ft / 54 sq m  
 Garage = 140 sq ft / 13 sq m  
 Total = 721 sq ft / 67 sq m



Energy Efficiency Rating		Current	Potential
Very energy efficient - lower running costs			
(92-100)	A		
(81-91)	B		
(69-80)	C		
(55-68)	D		
(39-54)	E		
(21-38)	F		
(1-20)	G		
Not energy efficient - higher running costs			
England, Scotland & Wales		71	78



Not to scale. For guidance only and not to be relied upon as a statement of fact. All measurements and areas are approximate only and may have been prepared in accordance with the current edition of the RICS Code of Measuring Practice.