

# FOR SALE

---

Askew Road,  
Shepherd's Bush, W12

---

Flat  
Askew Village

---

£575,000 lh

---

2  2  1 

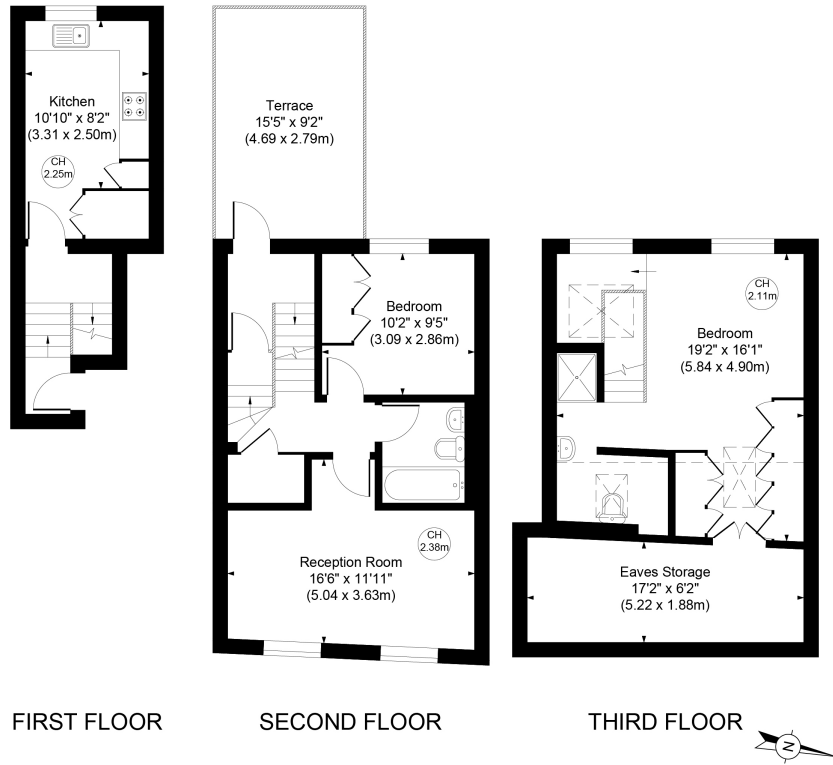


**horton  
andgarton**

SALES / LETTINGS / PROPERTY MANAGEMENT

hortonandgarton.co.uk | Sales 020 8819 0510 | Lettings 020 8819 0511  
172 King Street, Hammersmith, W6 0QU





horton  
andgarton

**ASKEW ROAD,**  
 APPROXIMATE GROSS INTERNAL AREA  
**909 Sq/84.49 SqM**  
 APPROXIMATE EAVES STORAGE AREA  
**121 Sq/ 11.26 SqM**  
**APPROXIMATE TOTAL AREA**  
**1030 Sq/ 95.76 SqM**

Not to scale, for guidance only and must not be relied upon as a statement of fact.  
 All measurements and areas are approximate only



Split level maisonette | Two bedrooms - Two bathrooms  
 | 909 Sq' - 84.9 SqM | Turnkey finish | EPC rating C |  
 Askew Village



hortonandgarton.co.uk  
 Sales 020 8819 0510  
 Lettings 020 8819 0511

172 King Street, Hammersmith, W6 0QU