



diamond
PROPERTIES



37 Hartley Crescent, Woodhouse, LEEDS, West Yorkshire. LS6 2LL.

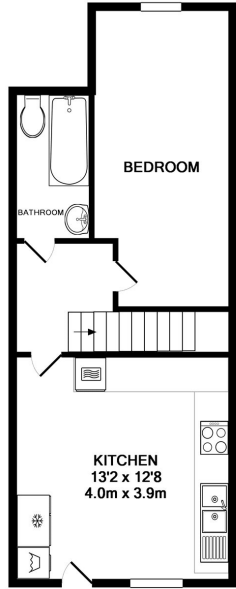
£1,955.35 Freehold

- 5 Double Bedrooms
- Recently refurbished
- Two Bathrooms
- Lots of Local Amenities
- Great location
- £90PPPW
- Available 01.07.2022

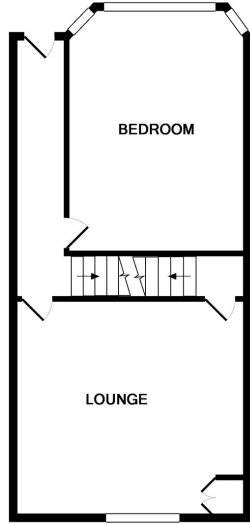
37 Hartley Crescent, Woodhouse, LEEDS, West Yorkshire. LS6 2LL.

£1,955.35 Freehold

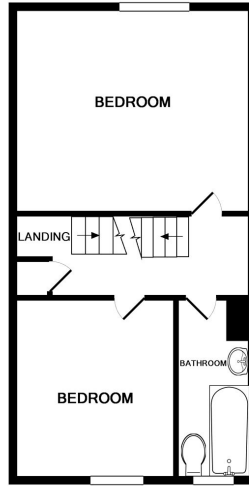
Diamond Properties are delighted to offer to let, this 5 bedroom, two bathroom, mid terrace property, which has just gone through a full refurbishment! It would make an ideal student property and is situated in an ideal location of Woodhouse, with good access to amenities and commuter transport links. The accommodation briefly comprises: To the Lower Ground a fitted kitchen, bathroom and bedroom. To the Ground Floor a bedroom and living-room. To the First Floor two bedroom and bathroom. To the Second Floor two bedrooms. An early viewing is a must to fully appreciate this property!



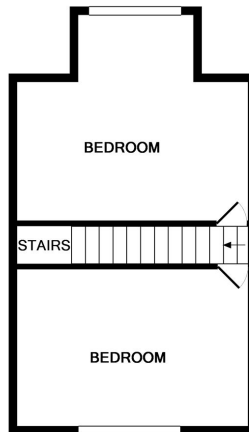
BASEMENT LEVEL
APPROX. FLOOR
AREA 400 SQ.FT.
(37.2 SQ.M.)



GROUND FLOOR
APPROX. FLOOR
AREA 391 SQ.FT.
(36.3 SQ.M.)



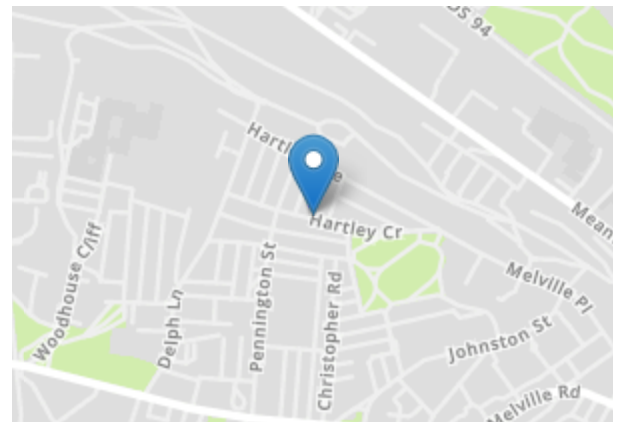
1ST FLOOR
APPROX. FLOOR
AREA 374 SQ.FT.
(34.7 SQ.M.)

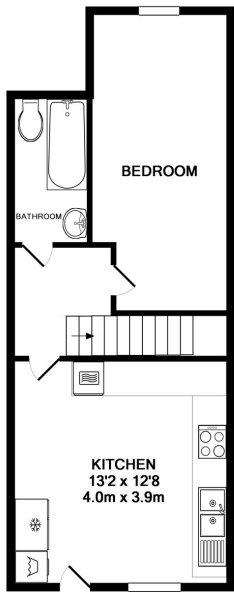


2ND FLOOR
APPROX. FLOOR
AREA 309 SQ.FT.
(28.7 SQ.M.)

TOTAL APPROX. FLOOR AREA 1474 SQ.FT. (136.9 SQ.M.)

Whilst every attempt has been made to ensure the accuracy of the floor plan contained here, measurements of doors, windows, rooms and any other items are approximate and no responsibility is taken for any error, omission, or mis-statement. This plan is for illustrative purposes only and should be used as such by any prospective purchaser. The services, systems and appliances shown have not been tested and no guarantee as to their operability or efficiency can be given.
Made with Metropix ©2015

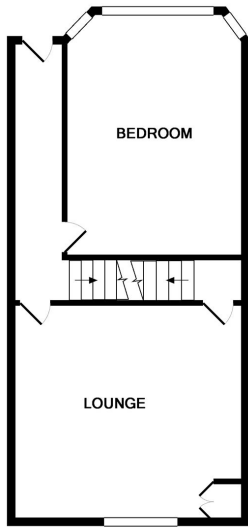




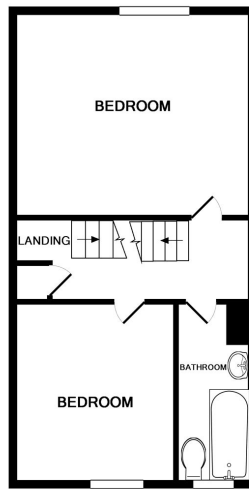
BASEMENT LEVEL
APPROX. FLOOR
AREA 400 SQ.FT.
(37.2 SQ.M.)

TOTAL APPROX. FLOOR AREA 1474 SQ.FT. (136.9 SQ.M.)

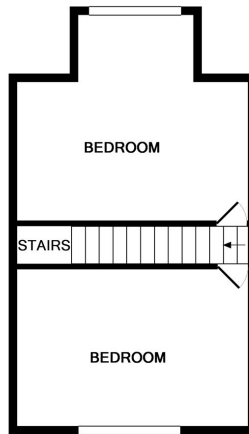
Whilst every attempt has been made to ensure the accuracy of the floor plan contained here, measurements of doors, windows, rooms and any other items are approximate and no responsibility is taken for any error, omission, or mis-statement. This plan is for illustrative purposes only and should be used as such by any prospective purchaser. The services, systems and appliances shown have not been tested and no guarantee as to their operability or efficiency can be given
Made with Metropix ©2015



GROUND FLOOR
APPROX. FLOOR
AREA 391 SQ.FT.
(36.3 SQ.M.)



1ST FLOOR
APPROX. FLOOR
AREA 374 SQ.FT.
(34.7 SQ.M.)



2ND FLOOR
APPROX. FLOOR
AREA 309 SQ.FT.
(28.7 SQ.M.)