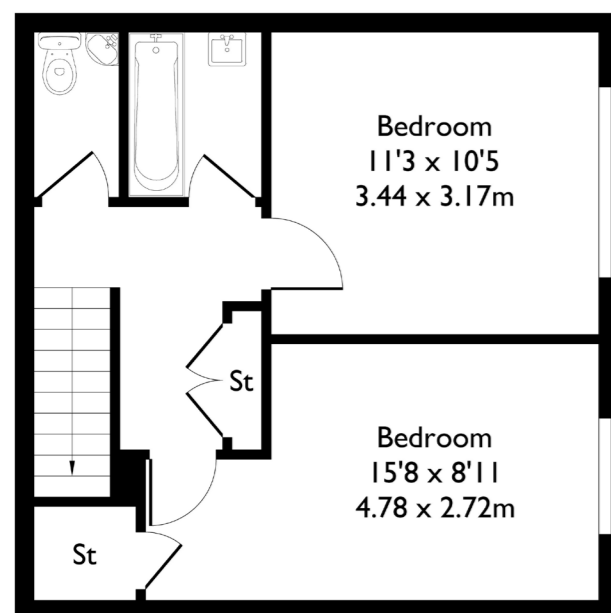
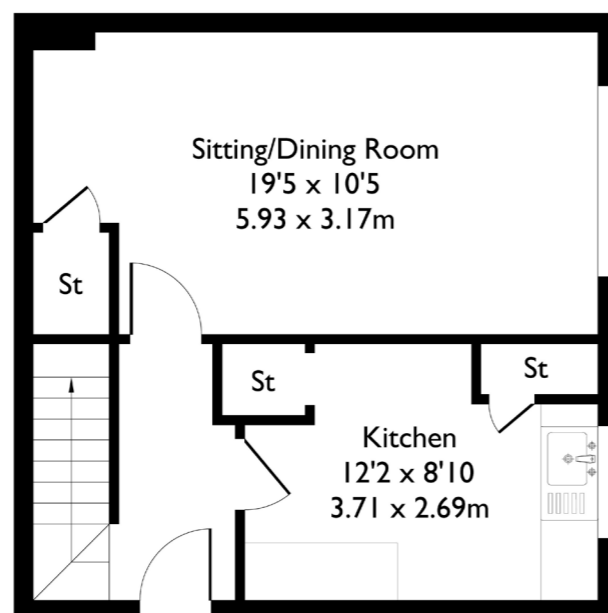


Lambourn Close, London, W7

Approximate Floor Area = 70.6 sq m / 761 sq ft



Second Floor



Third Floor



2 BEDROOM FLAT

Lambourn Close, W7

£290,000

Welcome to this two bedroom duplex flat in the heart of Hanwell.

Set over two floors, the property features a separate reception/dining room and a well appointed kitchen on the lower level.

FEATURES

- Two Bedrooms
- One Bathroom & Separate W/C
- Separate Kitchen/ Dining
- Boston Manor Station/ Hanwell Station (Elizabeth Line)
- Elthorne Park Nearby
- Elthorne Park High School
- EPC Rating C



2 BEDROOM FLAT

Lambourn Close, W7 £290,000

Upstairs, you'll find two generous double bedrooms along with a split bathroom arrangement, offering both a W/C and a separate bathroom.

Perfectly positioned, it's just a short stroll to the green open spaces of Elthorne Park and within 10 minutes' walk of both Hanwell and Boston Manor stations, providing excellent transport links. Local shops, cafés, and other amenities are also close at hand, making this an ideal home for convenience and comfort.

EPC Rating C.

