



NEWSON & BUCK
ESTATE AGENTS



69 Station Road, Terrington St Clement, King's Lynn, Norfolk PE34 4PL £295,000

Newson & Buck are please to present to you this three bedroom detached house situated in popular village of Terrington St Clements, just four miles from King's Lynn. The property consists of entrance hallway down stairs w/c, lounge, dinning room, kitchen diner, three bedrooms and a family bathroom. The property further benefits from a rear garden, garage space and off road parking for numerous vehicles. Amenities can be found near by with more extensive shops, restaurants and rail links in King's Lynn.

Entrance Hallway

5' 07" x 17' 10" (1.70m x 5.44m) Wood flooring, one radiator, one under stairs cupboard and staircase to first floor.

Lounge

9' 11" x 17' 10" (3.02m x 5.44m) Laminate flooring, one radiator, open fire place, one double glazed window.

Kitchen Diner

25' 08" x 5' 04" (7.82m x 1.63m) Tiled flooring, fitted kitchen units, sink drainer, electric oven hob with over head extractor, two double glazed windows, double glazed door leading to rear garden, space for washing machine and fridge freezer.

Dining Room

8' 09" x 11' 2" (2.67m x 3.40m) Laminate flooring, one radiator, one double glazed window.

W/C

Vinyl flooring, pedestal sink, low flush w/c, one double glazed window, heated towel rail.

Landing

One double glazed window, fitted carpets and tow cupboards

Bedroom One

15' 11" x 9' 11" (4.85m x 3.02m) Fitted carpets, one radiator, one double glazed window, fitted cupboard space

Bedroom Two

5' 11" x 17' 0" (1.80m x 5.18m) Fitted carpets, one radiator, two double glazed windows.

Bedroom Three

8' 07" x 8' 10" (2.62m x 2.69m) Fitted carpets, one radiator, one double glazed window.

Bathroom

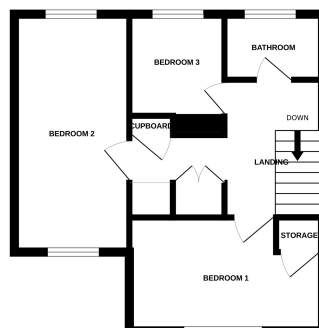
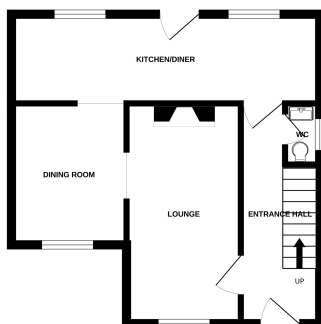
5' 05" x 6' 10" (1.65m x 2.08m) Wood flooring, one double glazed window, bath tub with over hear shower, low flush w/c, pedestal sink, one radiator.

Rear Garden



GROUND FLOOR

1ST FLOOR



Whilst every attempt has been made to ensure the accuracy of the floorplan contained here, measurements of doors, windows, rooms and any other items are approximate and no responsibility is taken for any error, omission or mis-statement. This plan is for illustrative purposes only and should be used as such by any prospective purchaser. The services, systems and appliances shown here have been tested and no guarantee as to their operability or efficiency can be given.
Made with Neotopix ©2023