

BURGHILL

£399,950

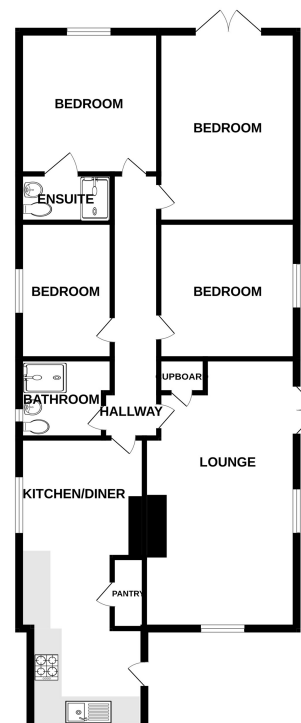


Key Features

- ✓ Backing onto Golf Course
- ✓ Four bedrooms
- ✓ En-Suite Shower Room
- ✓ Views across golf course and countryside



GROUND FLOOR
995 sq.ft. (92.4 sq.m.) approx.



TOTAL FLOOR AREA: 995 sq.ft. (92.4 sq.m.) approx.
Made with Viewpoint i2021