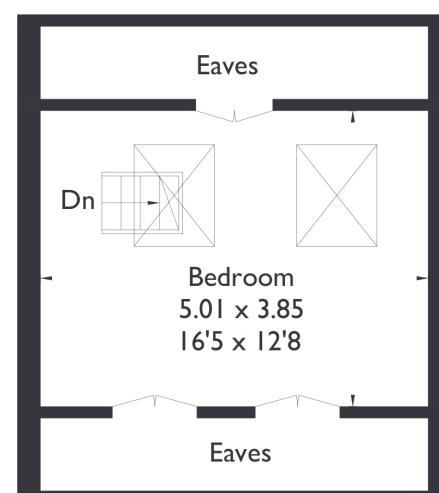


Salisbury Road, W13

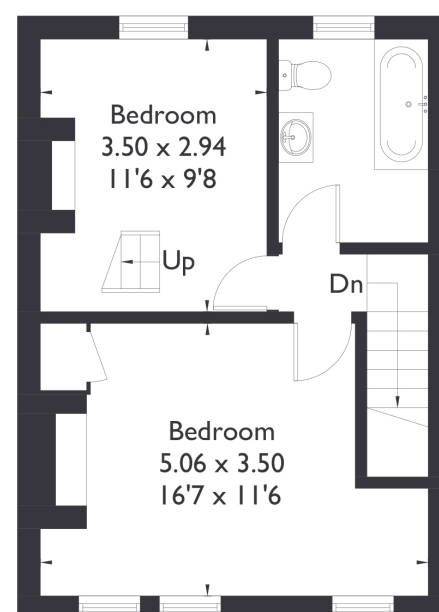
Approximate Floor Area = 111.3 sq m / 1198 sq ft (Including Eaves)
Outbuilding = 4 sq m / 43 sq ft
Total = 115.3 sq m / 1241 sq ft



Ground Floor



Second Floor



First Floor



2 BEDROOM HOUSE

Salisbury Road, W13

£825,000

Welcome to this well presented two bedroom, one bathroom terraced home, ideally situated in the heart of Northfields.

The property features a spacious front reception room, an open-plan kitchen and dining/living area at the rear, and a west facing garden perfect for outdoor enjoyment.

FEATURES

- Two Bedrooms
- One Bathrooms
- Separate Living/Kitchen
- West Ealing Station (Elizabeth Line)/ Northfields Station (Piccadilly Line)
- Potential To Extend (STPP)
- On Street Parking
- EPC Rating D



2 BEDROOM HOUSE

Salisbury Road, W13

Upstairs, you'll find two well proportioned bedrooms and a family bathroom, along with an insulated loft space.

With potential to extend, this home offers fantastic scope for future enhancement. Conveniently located just five minutes from Northfields' vibrant amenities and Northfields Station (Piccadilly Line), it's also a short walk to West Ealing Station (Elizabeth Line) and within the sought-after catchment area for Fielding Primary School. EPC Rating D

